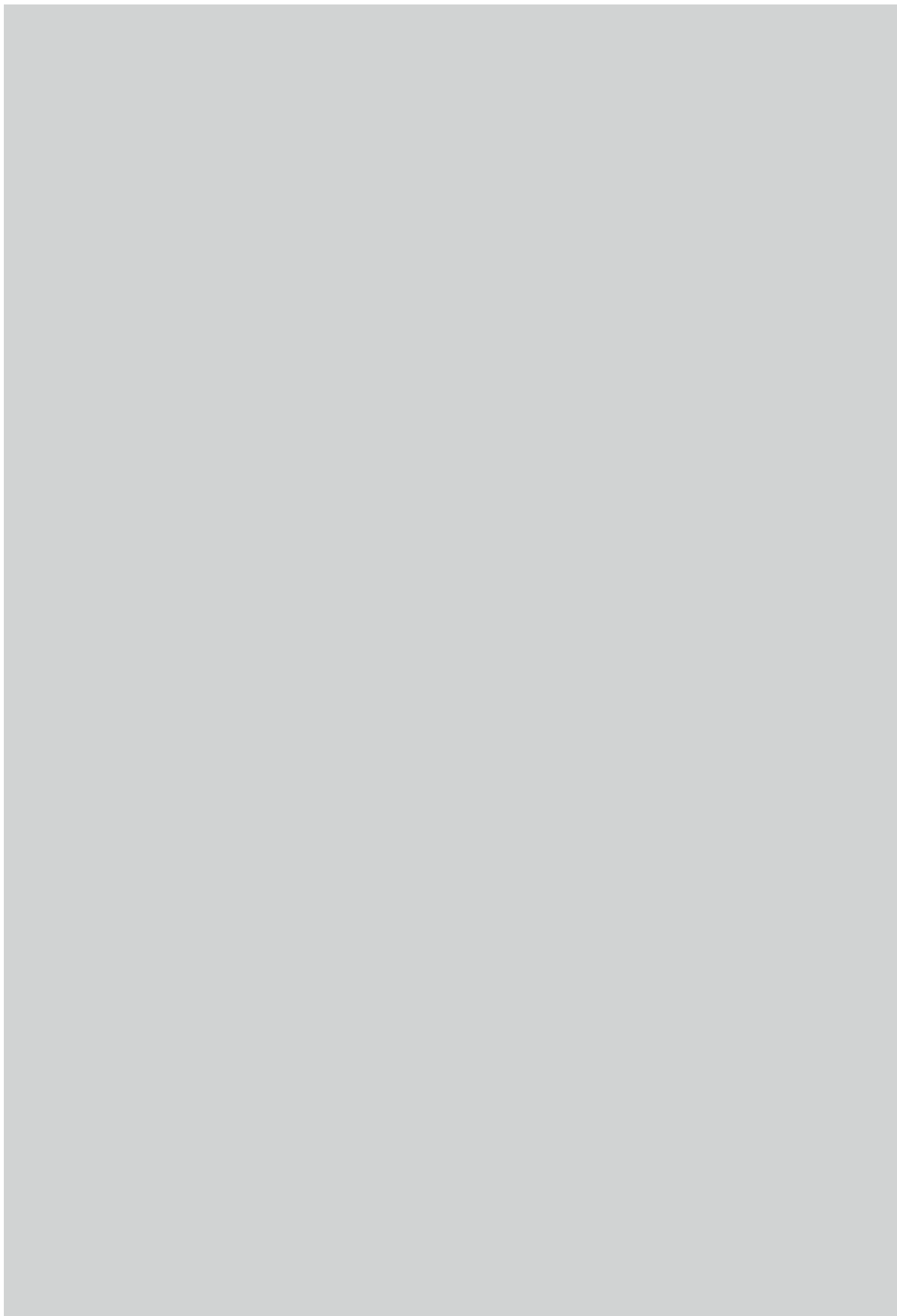




memorie

appiani



8, 18, 28, 36, 46, 54  
memoria luce

2, 14, 24, 32, 42, 50  
memoria ombra

59

Informazioni Tecniche  
Technical information  
Informations techniques  
Technische Informationen  
Información técnica  
Техническая информация  
技术资讯

memorie

**appiani**

# memoria ombra



modulo/module/module/Modul/módulo/  
модуль/拼图组合  
30 x 30 cm (1,2 x 1,2 cm)  
12"x 12" (0,5"x 0,5")

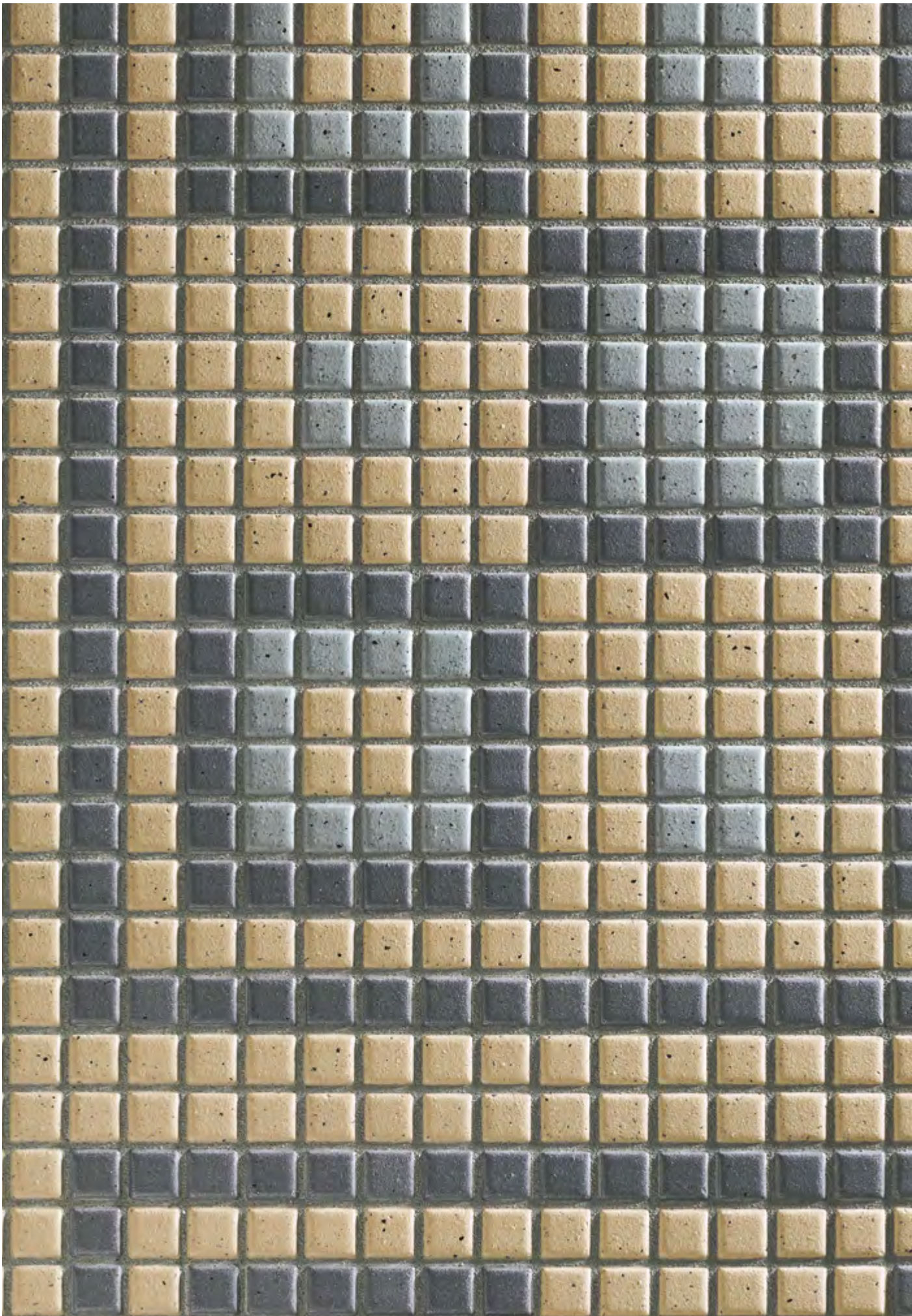
MEMORIA 07  
Open Space Zirconio (07)  
Open Space Ankerite (02)  
Open Space Ematite (03)





pavimento / flooring: MEM0007 (info p. 71)





pavimento / flooring: MEMOI07 (info p. 71) + Open Space Ematite OPS 4003













pavimento / flooring: MEMOE07 (info p. 71)



# memoria luce



modulo/module/module/Modul/módulo/  
модуль/拼图组合  
30 x 30 cm (1,2 x 1,2 cm)  
12"x 12" (0,5"x 0,5")

MEMORIA 01  
Seta Nuvola (02)  
Seta Primavera (11)  
Metallica Alluminio (06)

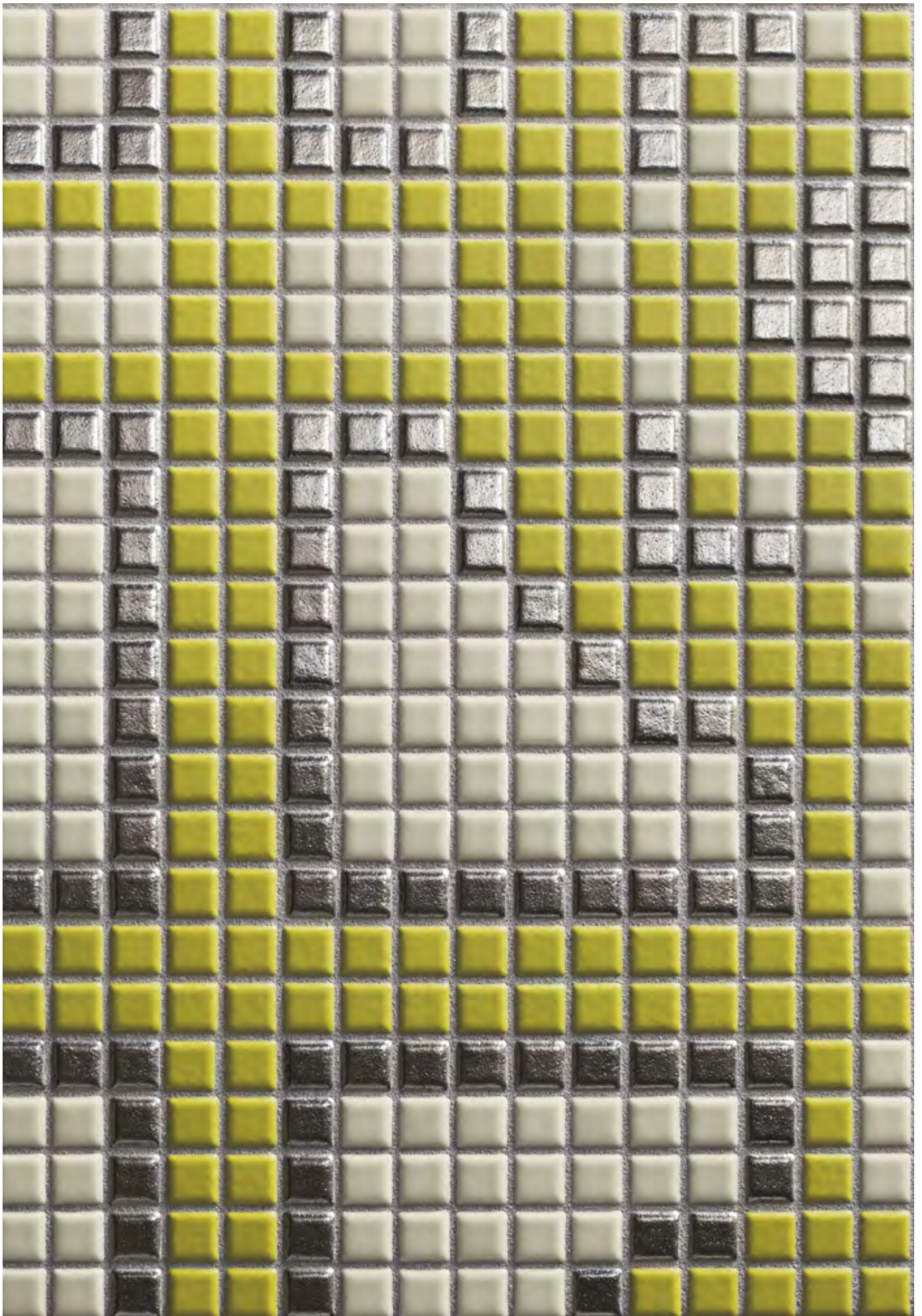


pavimento / flooring: MEM0001 (info p. 65)









pavimento / flooring: MEMOG01 (info p. 65)









pavimento / flooring: MEM0001 (info p. 65) + Seta Primavera SET 4011+ Seta Nuvola SET4002

# memoria ombra



modulo/module/module/Modul/módulo/  
модуль/拼图组合  
30 x 30 cm (1,2 x 1,2 cm)  
12"x 12" (0,5"x 0,5")

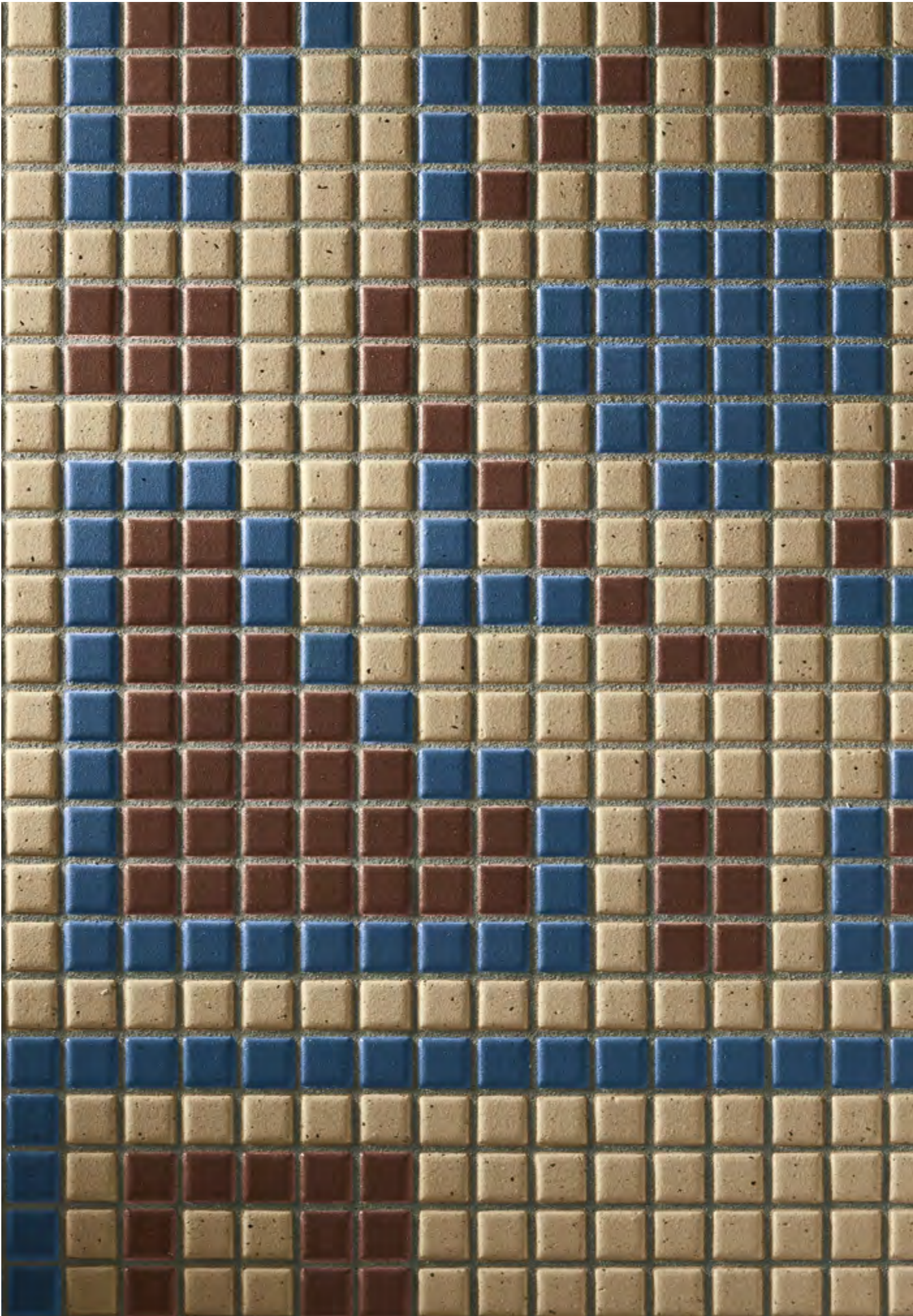
MEMORIA 11  
Open Space Zirconio (07)  
Open Space Ferro (10)  
Open Space Azzurrite (12)





pavimento / flooring: MEMO11 (info p. 75)





pavimento / flooring: MEM0011 (info p. 75)







# memoria luce



modulo/module/module/Modul/módulo/  
модуль/拼图组合  
30 x 30 cm (1,2 x 1,2 cm)  
12"x 12" (0,5"x 0,5")

MEMORIA 02  
Seta Ghiaccio (01)  
Seta Nuvola (02)  
Metallica Alluminio (06)

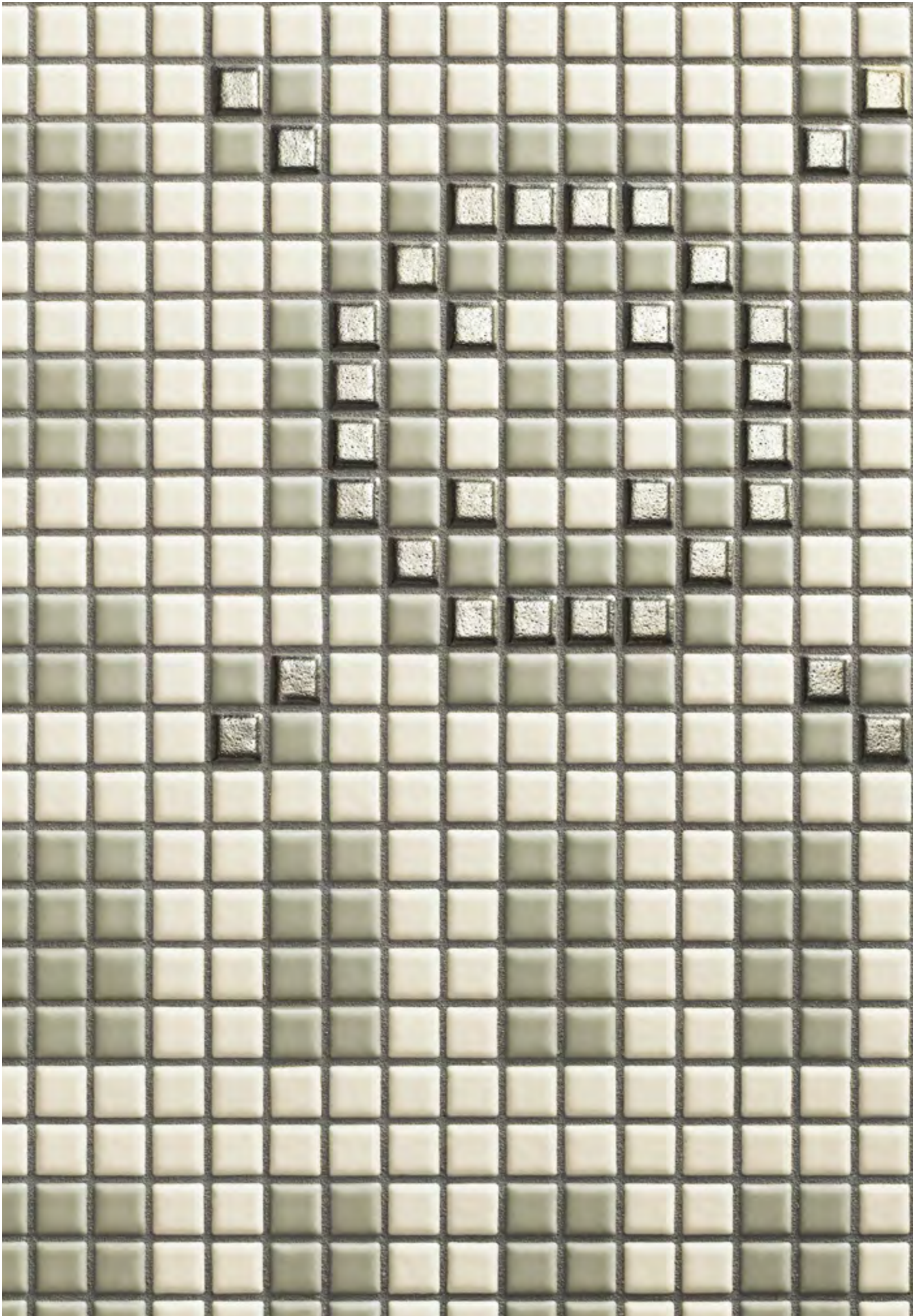


pavimento / flooring: MEM0002 (info p. 66)









pavimento / flooring: MEMOD02 (info p. 66)









pavimento interno / inside flooring: MEMOM02 (info p. 66), pavimento esterno / outside flooring: MEMO008 (info p. 72)

# memoria ombra



modulo/module/module/Modul/módulo/  
модуль/拼图组合  
30 x 30 cm (1,2 x 1,2 cm)  
12"x 12" (0,5"x 0,5")

MEMORIA 08  
Open Space Calcite (01)  
Open Space Vanadio (06)  
Open Space Ematite (03)



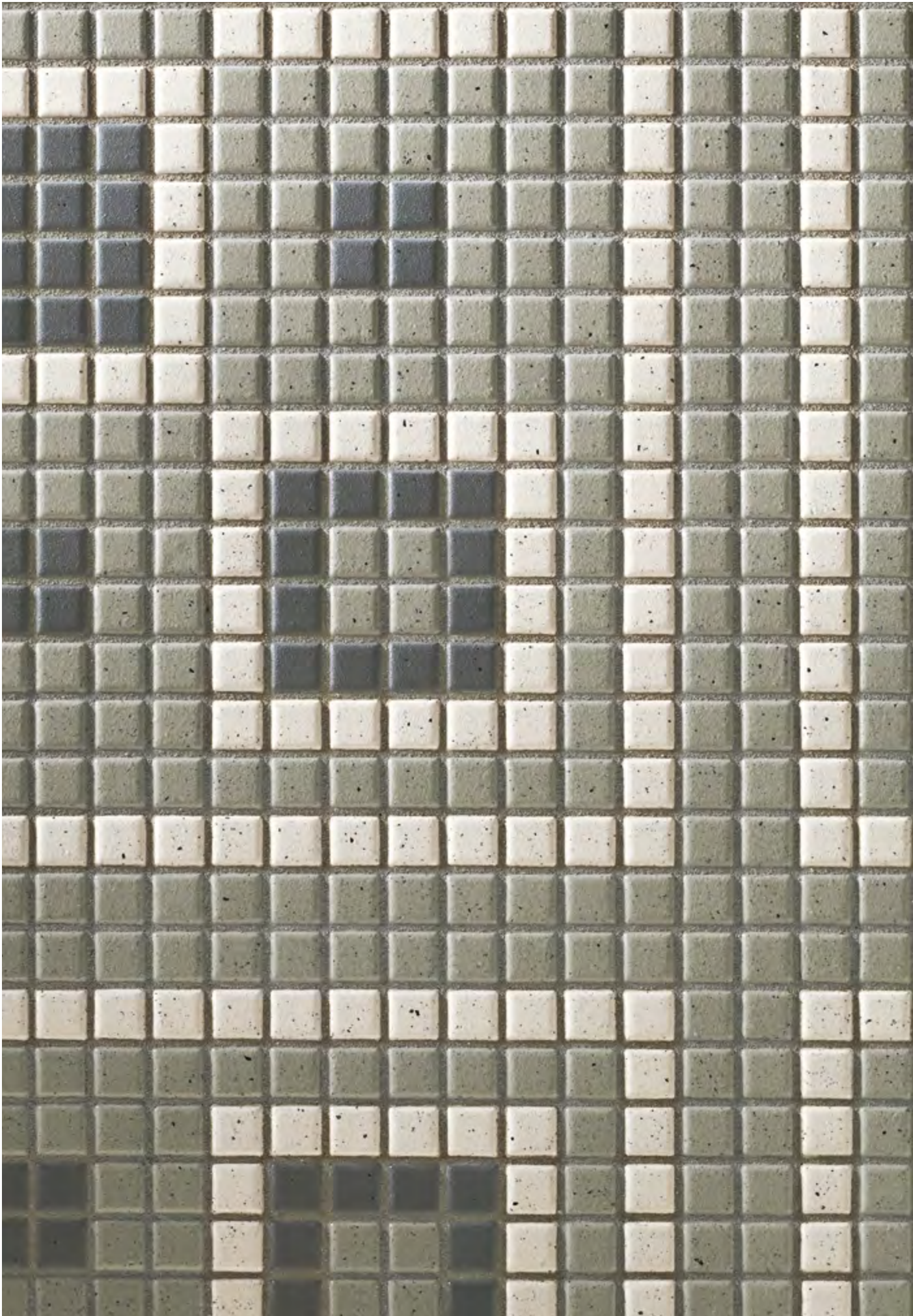


pavimento / flooring: MEM0008 (info p. 72)









pavimento / flooring: MEMOL08 (info p. 72)



# memoria luce



modulo/module/module/Modul/módulo/  
модуль/拼图组合  
30 x 30 cm (1,2 x 1,2 cm)  
12"x 12" (0,5"x 0,5")

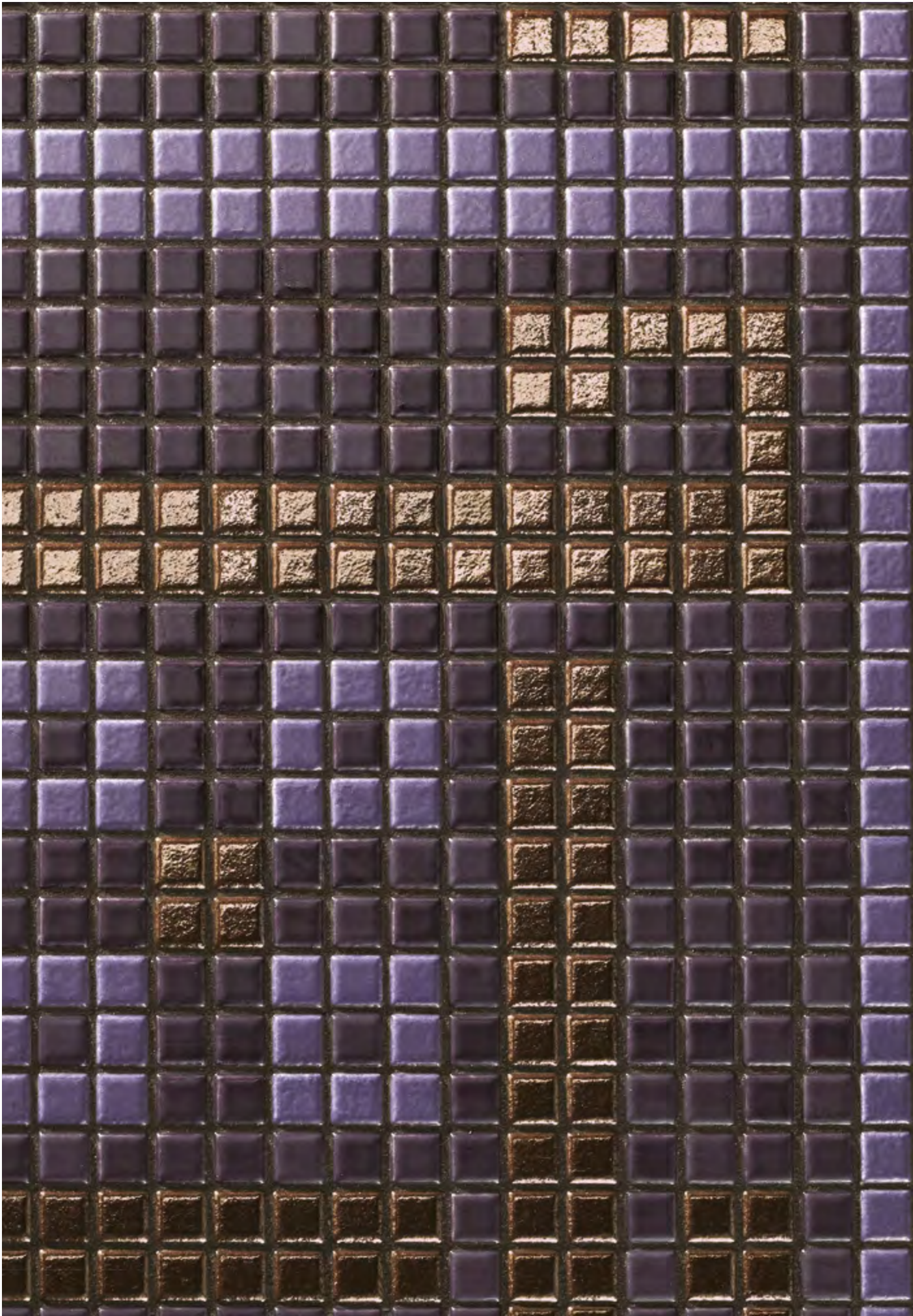
MEMORIA 03  
Seta Prugna (07)  
Seta Melanzana (06)  
Metallica Bronzo (04)





pavimento / flooring: MEM0003 (info p. 67)





rivestimento / coating: MEMOB03 (info p. 67)







# memoria ombra



modulo/module/module/Modul/módulo/  
модуль/拼图组合  
30 x 30 cm (1,2 x 1,2 cm)  
12"x 12" (0,5"x 0,5")

MEMORIA 09  
Open Space Ankerite (02)  
Open Space Ematite (03)  
Open Space Rutile (04)





pavimento / flooring: MEMOC09 (info p. 73)









pavimento / flooring: MEM0009 (info p. 73) - rivestimento piscina / pool coating: Anthologhia Muscari MOS 7030



# memoria luce



modulo/module/module/Modul/módulo/  
модуль/拼图组合  
30 x 30 cm (1,2 x 1,2 cm)  
12"x 12" (0,5"x 0,5")

MEMORIA 04  
Seta Oliva (10)  
Seta Cacao (05)  
Metallica Bronzo (04)





pavimento / flooring: MEMOG04, MEMOH04 (info p. 68), Seta Cacao SET 4005





pavimento / flooring: MEM0004 (info p. 68) - rivestimento / coating: MEMOC04 (info p. 68)













pavimento / flooring: MEM0004 (info p. 68)



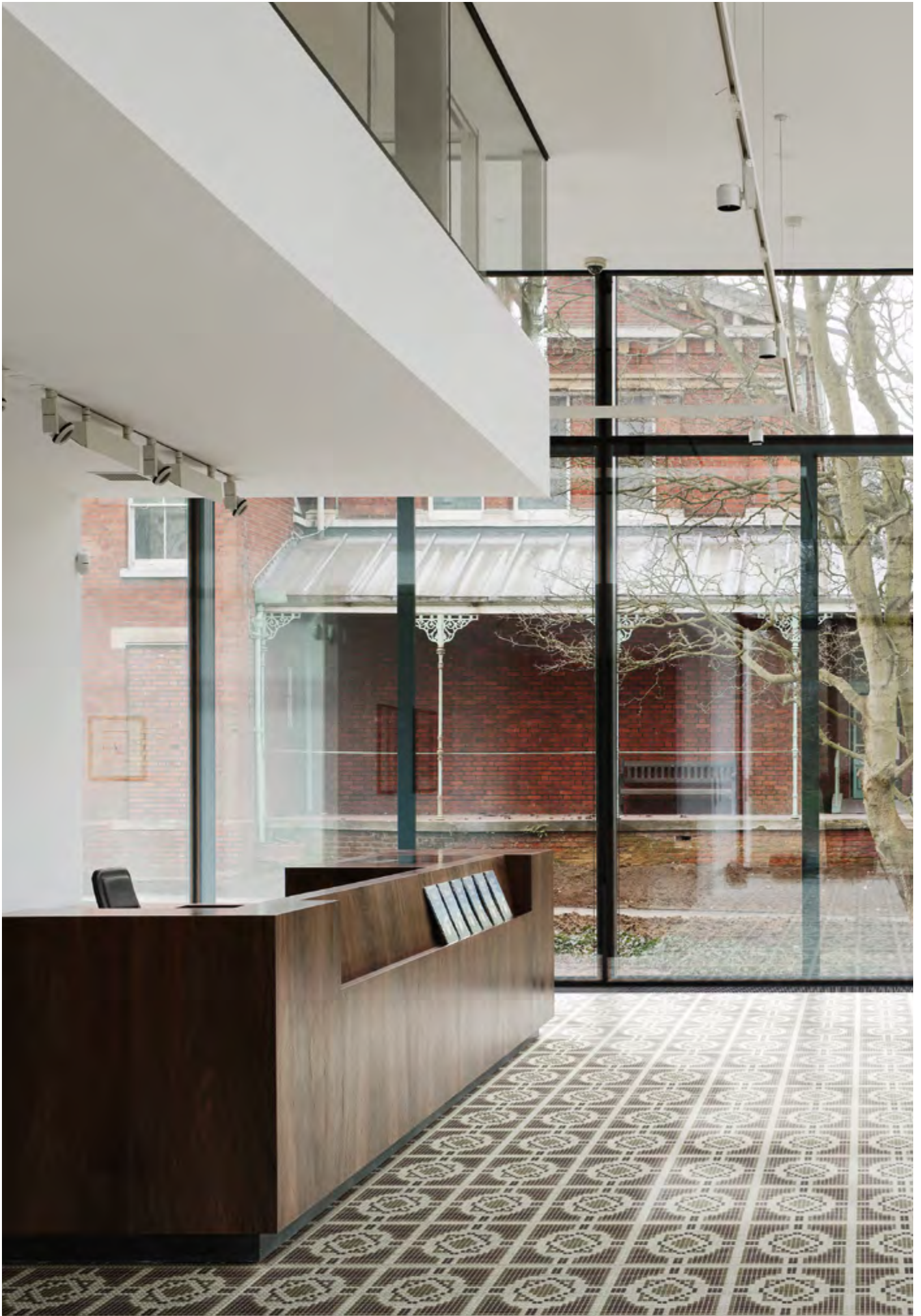
# memoria ombra



modulo/module/module/Modul/módulo/  
модуль/拼图组合  
30 x 30 cm (1,2 x 1,2 cm)  
12"x 12" (0,5"x 0,5")

MEMORIA 10  
Open Space Vanadio (06)  
Open Space Ramina (05)  
Open Space Rutile (04)



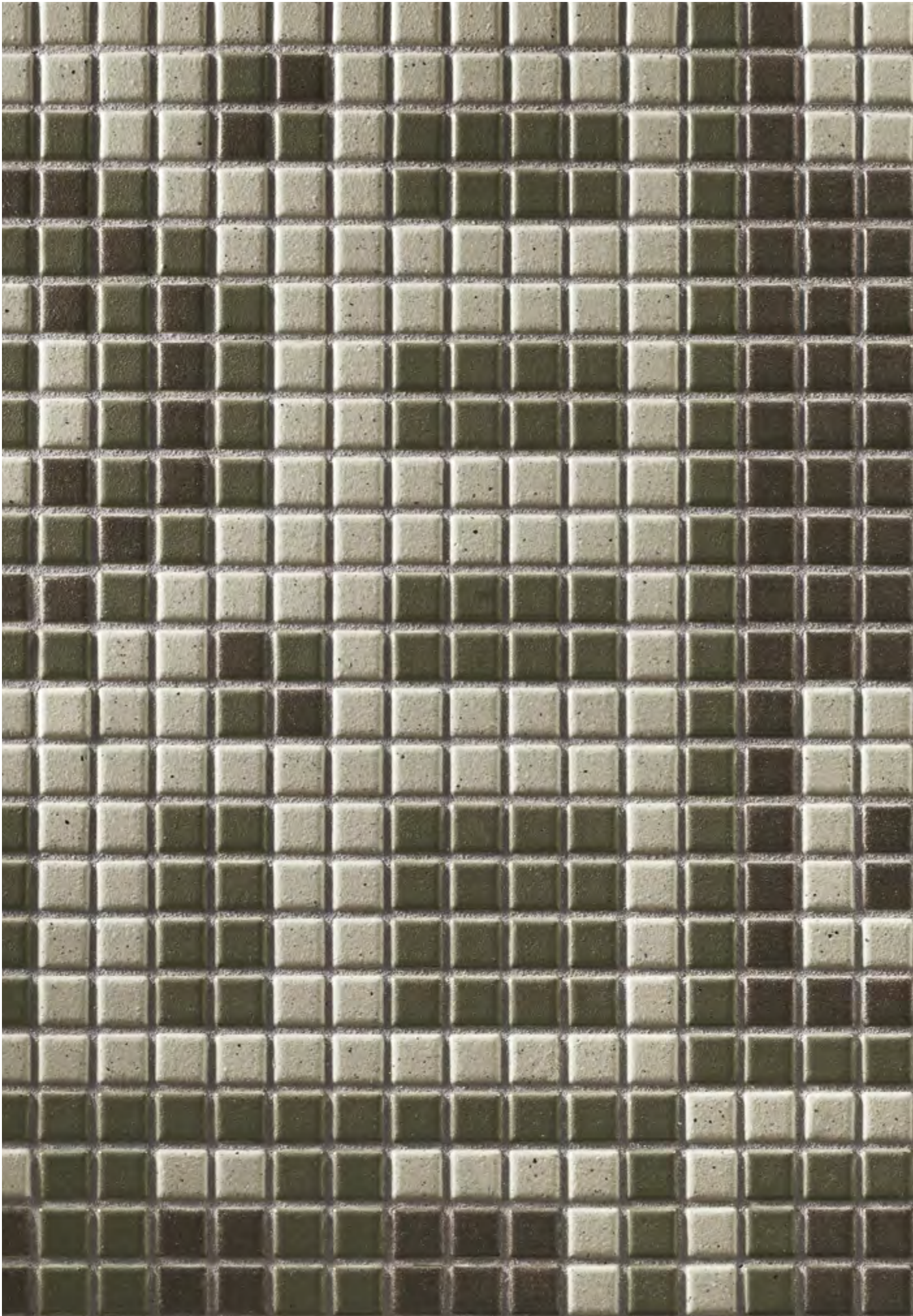


pavimento / flooring: MEMOH10 (info p. 74)









pavimento / flooring: MEM0010 (info p. 74)



# memoria luce



modulo/module/module/Modul/módulo/  
модуль/拼图组合  
30 x 30 cm (1,2 x 1,2 cm)  
12"x 12" (0,5"x 0,5")

MEMORIA 06  
Seta Nuvola (02)  
Seta Mirto (09)  
Metallica Alluminio (06)





pavimento / flooring: MEM0006 (info p. 70)









pavimento / flooring: MEMON06 (info p. 70)



# memoria ombra



modulo/module/module/Modul/módulo/  
модуль/拼图组合  
30 x 30 cm (1,2 x 1,2 cm)  
12"x 12" (0,5"x 0,5")

MEMORIA 12  
Open Space Vanadio (06)  
Open Space Ferro (10)  
Open Space Ematite (03)



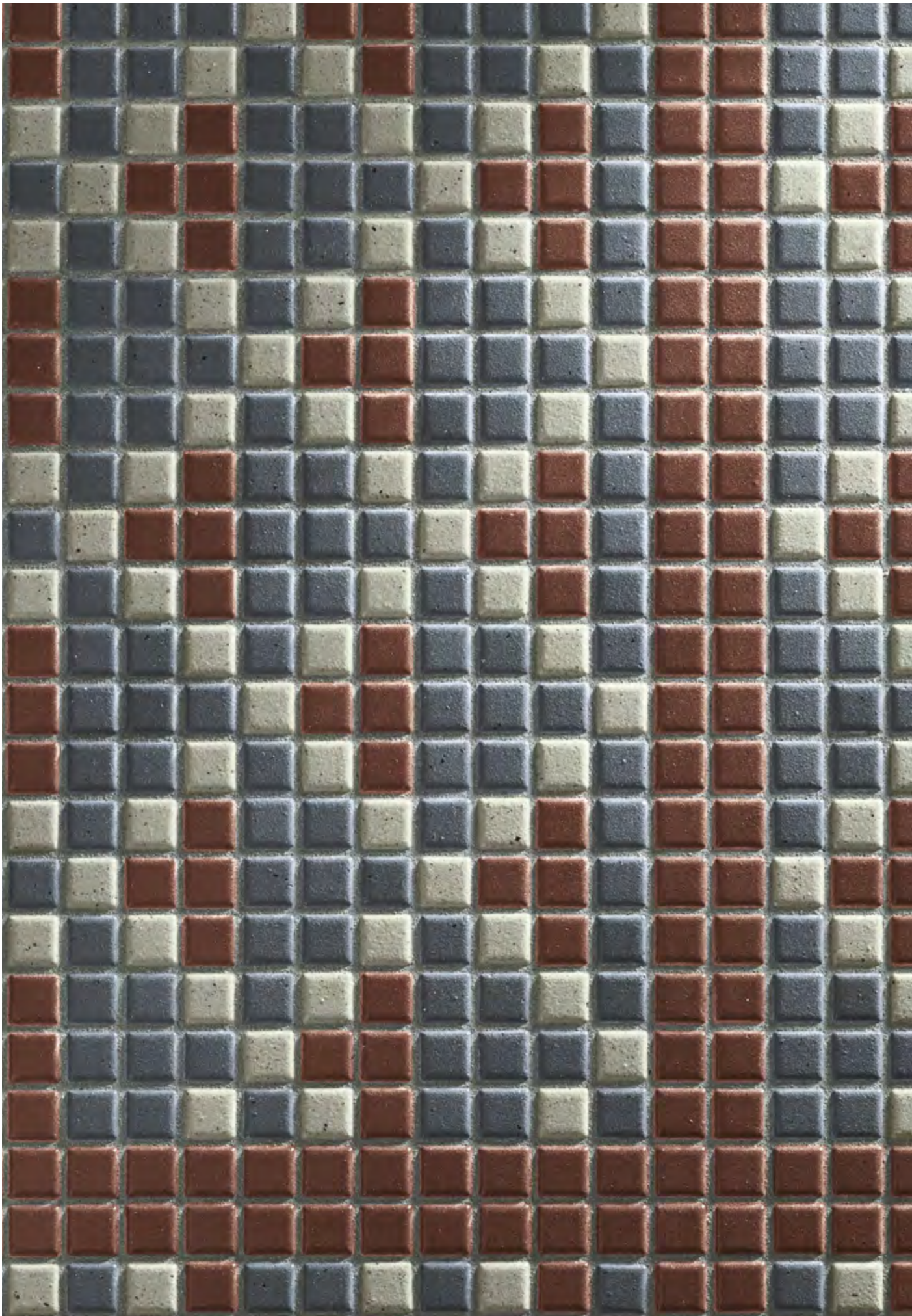


pavimento / flooring: da/from MEMOA12 a/to MEMON12 (info p. 76)









pavimento / flooring: MEMOF12 (info p. 76)



# memoria luce



modulo/module/module/Modul/módulo/  
модуль/拼图组合  
30 x 30 cm (1,2 x 1,2 cm)  
12"x 12" (0,5"x 0,5")

MEMORIA 05  
Seta Fumo (03)  
Seta Cacao (05)  
Metallica Bronzo (04)





pavimento / flooring: MEMOL05 (info p. 69)





pavimento / flooring: da/from MEMOA05 a/to MEMON05 (info p. 69)











Informazioni Tecniche  
Technical information  
Informations techniques  
Technische Informationen  
Información técnica  
Техническая информация  
技术资讯

memorie







Mosaico ceramico appiani  
Ceramic mosaics  
Mosaïque céramique  
Keramikmosaik  
Mosaico cerámico  
Керамическая мозаика  
公司的陶瓷马赛克

Le tessere di mosaico Appiani vengono fornite premontate con fuga di 1,6 mm su fogli in fibra di vetro di 30x30 cm. Il formato 1,2x1,2 cm è montato con fuga da 1 mm.

Lo spessore delle tessere è di 7,2 mm. La planarità delle tessere del mosaico ceramico Appiani e la leggera stondatura dei bordi rendono il prodotto liscio e gradevole al tatto facilitandone anche il mantenimento igienico.

The Appiani mosaic tesserae are supplied net mounted with a 1,6 mm joint on fiberglass net sheets sized 30x30 cm. Size 1.2x1.2 cm is supplied net mounted with a 1 mm joint. The tesserae are 7.2 mm thick. The flatness of Appiani ceramic mosaic tiles and the slight rounding of the edges make the product smooth and pleasant to the touch, also facilitating the hygiene maintenance.

Les tesselles de mosaïque Appiani sont montées avec un joint de 1,6 mm sur filets en fibre de verre de 30x30 cm. Le format 1,2x1,2 cm est monté avec joint de 1 mm. L'épaisseur des tesselles est de 7,2 mm. La planéité des tesselles de la mosaïque céramique Appiani et le léger arrondi des bords rendent le produit lisse et agréable au toucher, facilitant aussi son entretien.

Die Mosaiksteine der Serie Appiani sind mit einer Fuge von 1,6 mm auf Glasfasernetz geklebt. Das Maß der Bögen beträgt 30x30 cm. Das Format 1,2x1,2 ist mit einer Fuge von 1 mm montiert.

Die Stärke der Mosaiksteine beträgt 7,2 mm. Die Ebenmäßigkeit der Keramikmosaiksteine Appiani und die leicht abgerundeten Fliesenkanten begründen das glatte und angenehme Berührungsfühl dieser Produkte, welche auch eine einfache hygienische Zweckdienlichkeit gewährleisten.

Las teselas de mosaico Appiani se entregan premontadas con juntas de 1,6 mm sobre hojas en fibra de vidrio de 30x30 cm, el formato 1,2x1,2 cm con junta de 1mm.

El espesor de las teselas es de 7,2 mm. La planaridad de las teselas del mosaico cerámico Appiani y la ligera redondez de los cantos, hace que el producto sea liso y agradable al tacto, facilitando también su mantenimiento higiénico.

Чипсы мозаики «Appiani» поставляются монтированными на сетке из стекловолокна формата 30 x 30 см (с промежуточными швами в 1,6 мм). Чипсы формата 1,2x1,2 монтированы с промежуточными швами в 1 мм. Толщина мозаичных чипсов 7,2 мм. . Плоская поверхность чипсов керамической мозаики Appiani и легкая сглаженность краев делают продукцию гладкой и приятной для прикосновения, а также облегчают уход за ней.

Appiani 马赛克供货时，预先安装在 30x30 cm 的玻璃纤维网上，间隙为 1,6 mm。1,2x1,2 cm 规格马赛克间隙为 1 mm。马赛克厚度是 7,2 mm。Appiani 陶瓷马赛克平整度好，四边呈轻微圆弧形，产品表面光滑、触感舒适。



Codifica dei prodotti  
Products code  
Référencement des produits  
Artikelnummern der Produkte  
Codificación de productos  
Кодировка продукции  
产品编码

Il codice del prodotto è indicato all'esterno della confezione di vendita (esempio: MEMO001).

La scatola contiene nr. 12 fogli di mosaico "Memorie" (nr. 1 disegno per tipo da "A" ad "N").  
Posare i fogli in modo casuale.

The product's code is printed on the outside of the sales package (e.g. MEMO001).

The box contains 12 "Memorie" mosaic sheets (1 pattern per type from "A" to "N").  
Lay down the sheets in random order.

Le code du produit est indiqué à l'extérieur de l'emballage de vente (par exemple : MEMO 001).

Le carton contient 12 plaques de mosaïque "Memorie" (1 dessin par type de "A" à "N").  
Poser les feuilles au hasard.

Der Artikelcode ist außen an der Verkaufsverpackung angegeben (Beispiel: MEMO001). Die Packung enthält 12 Mosaikfolien „Memorie“ (1 Stück pro Motiv von "A" bis "N"). Die Folien zufällig geordnet verlegen.

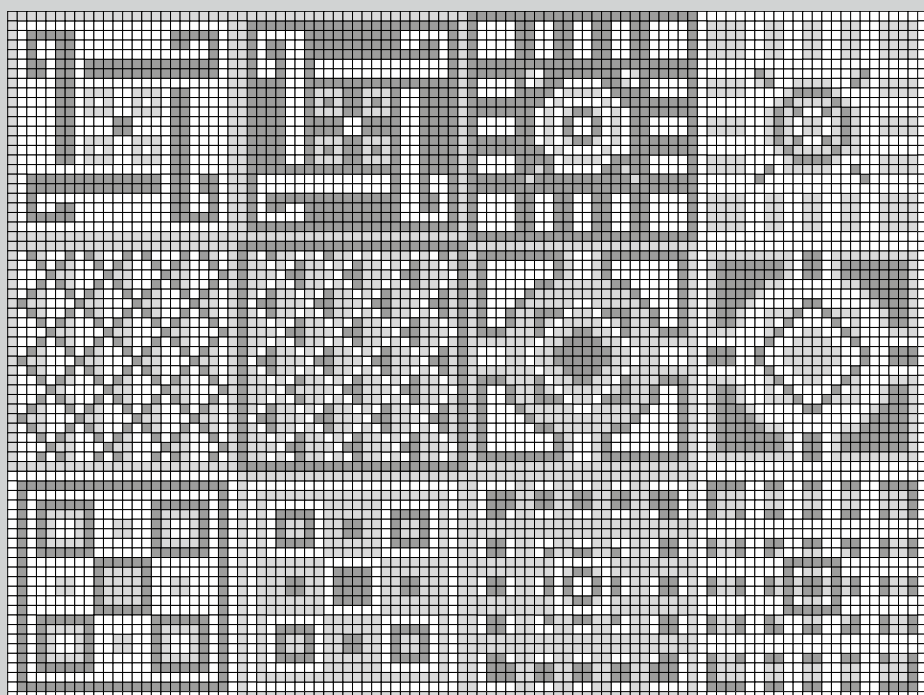
El código del producto se indica en el exterior del embalaje de venta (p. ej.: MEMO001).

La caja contiene 12 láminas de mosaico "Memorie" (1 diseño por tipo de la "A" a la "N").  
Colocar las láminas de modo aleatorio

Код продукта указан снаружи упаковки (напр. MEMO001).

Упаковка содержит 12 листов мозаики «Меморіе» (рисунок № 1 для типов от «А» до «N»).  
Расположить листы в произвольном порядке.

产品编码标志在销售包装外部 (比如: MEMO 001)。包装盒中含12片 "Memorie" 马赛克 (从 "A" 到 "N" 每种1片)。  
各片随机安置





Codifica dei prodotti  
 Products code  
 Référencement des produits  
 Artikelnummern der Produkte  
 Codificación de productos  
 Кодировка продукции  
 产品编码

Il codice del prodotto è indicato all'esterno della confezione di vendita (esempio: MEMOA01). La scatola contiene nr. 12 fogli di mosaico "Memorie" di un singolo disegno (esempio: 12 fogli di "A").

The product's code is printed on the outside of the sales package (e.g. MEMOA01). The box contains 12 "Memorie" mosaic sheets with one pattern (e.g. 12 "A" sheets).

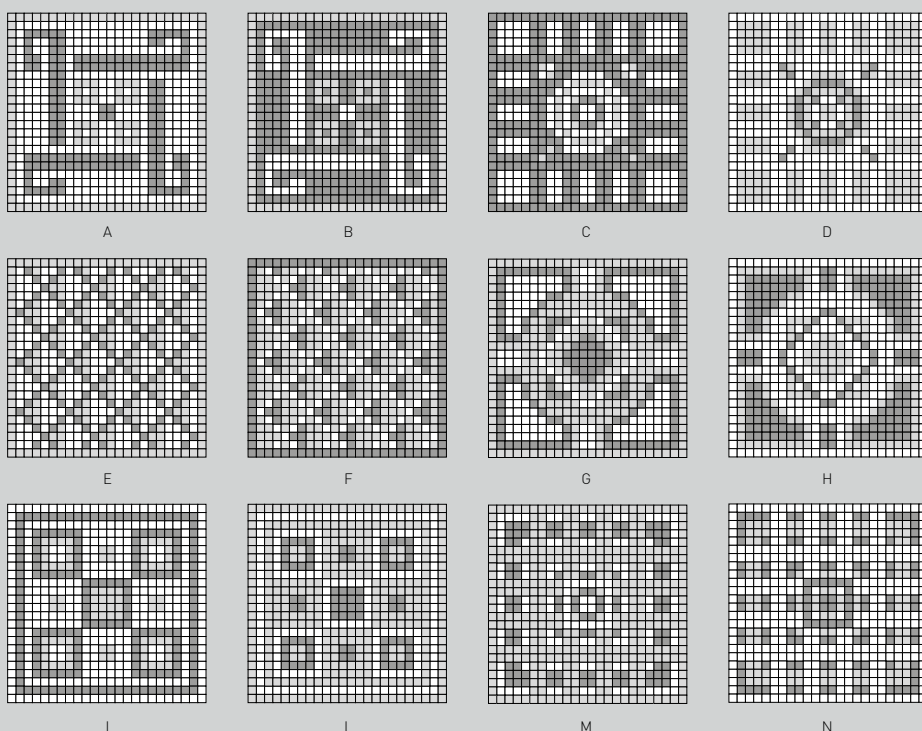
Le code du produit est indiqué à l'extérieur de l'emballage de vente (par exemple MEMO A01). Le carton contient 12 plaques de mosaïque "Memorie" d'un seul dessin (par exemple : 12 feuilles de "A").

Der Artikelcode ist außen an der Verkaufsverpackung angegeben (Beispiel: MEMOA01). Die Packung enthält 12 Mosaikfolien „Memorie“ mit einem einheitlichen Motiv (Beispiel: 12 Folien mit Motiv „A“)

El código del producto se indica en el exterior del embalaje de venta (p. ej.: MEMOA01). La caja contiene 12 láminas de mosaico "Memorie" con un solo diseño (p. ej.: 12 láminas de tipo "A").

Код продукта указан на упаковке (напр. MEMOA01). Упаковка содержит 12 листов мозаики «Меморие» одного типа (напр. 12 листов типа «А»).

产品编码标志在销售包装外部 (比如: MEMOA01)。包装盒中含12片 "Memorie" 单一花纹的马赛克 (比如: "A" 种12片)。



memoria luce

- p. 65  
MEMORIA 01
- p. 66  
MEMORIA 02
- p. 67  
MEMORIA 03
- p. 68  
MEMORIA 04
- p. 69  
MEMORIA 05
- p. 70  
MEMORIA 06

memoria ombra

- p. 71  
MEMORIA 07
- p. 72  
MEMORIA 08
- p. 73  
MEMORIA 09
- p. 74  
MEMORIA 10
- p. 75  
MEMORIA 11
- p. 76  
MEMORIA 12



# memoria luce

## MEMORIA 01

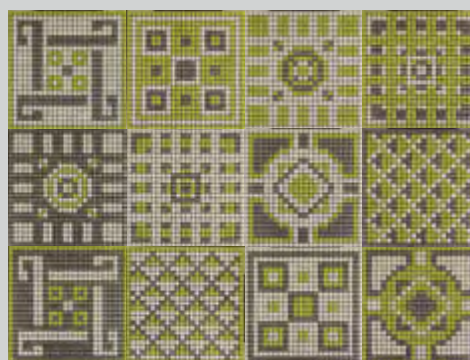
Seta Nuvola (02)



Seta Primavera (11)

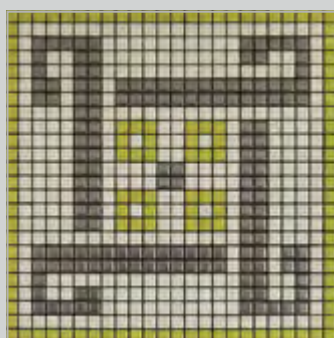


Metallica Alluminio (06)

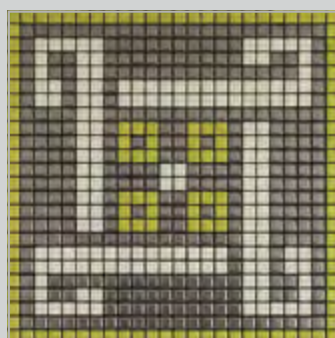


**MEM0001**

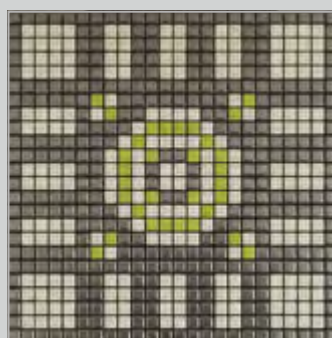
12 pz/pc/stck/шт/片 (1x: da/from "A" a/to "N")



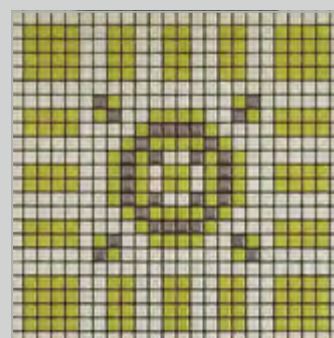
MEMOA01



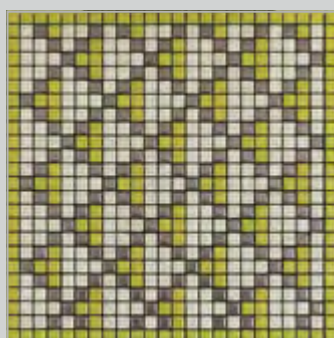
MEMOB01



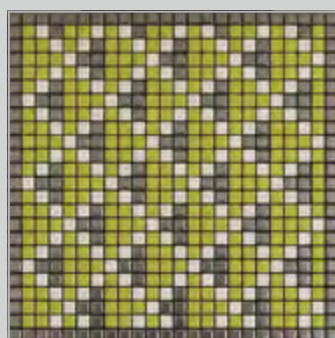
MEMOC01



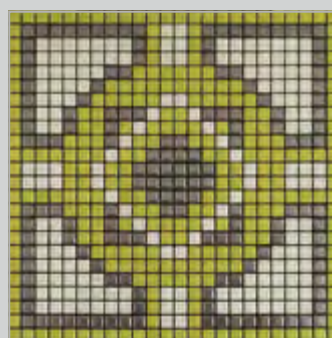
MEMOD01



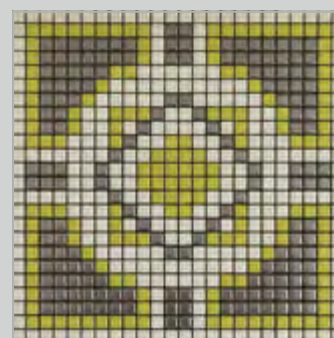
MEMOE01



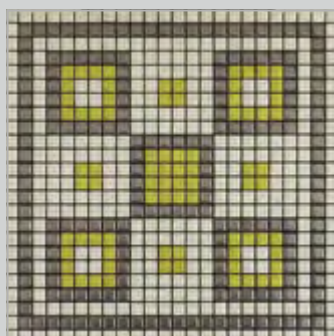
MEMOF01



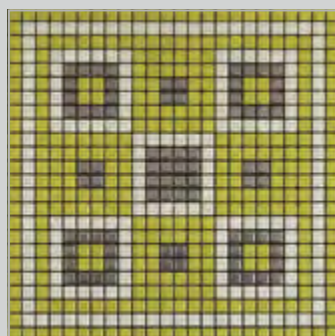
MEMOG01



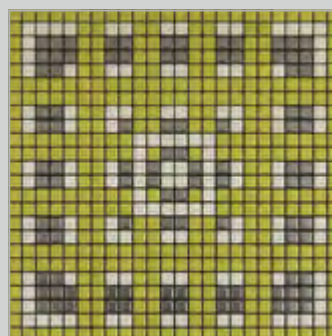
MEMOH01



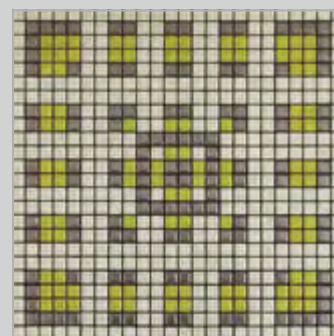
MEMOI01



MEMOL01



MEMOM01



MEMON01

modulo/module/module/Modul/módulo/модуль/拼图组合  
30 x 30 cm (1,2 x 1,2 cm)  
12"x 12" (0,5"x 0,5")



# memoria luce

## MEMORIA 02

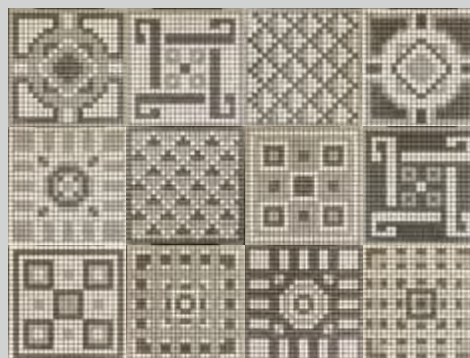
Seta Ghiaccio (01)



Seta Nuvola (02)

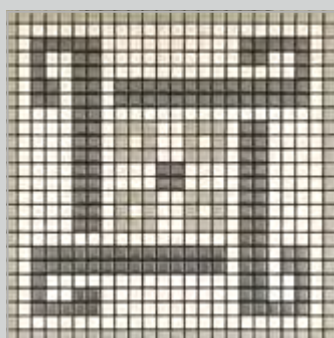


Metallica Alluminio (06)

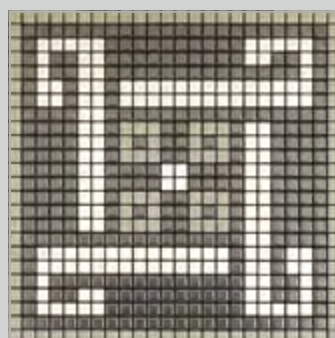


**MEM0002**

12 pz/pc/stck/шт/片 (1x: da/from "A" a/to "N")



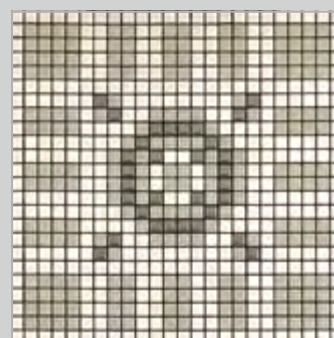
MEMOA02



MEMOB02



MEMOC02



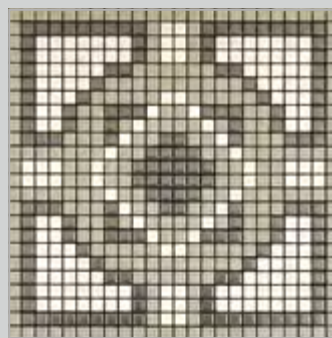
MEMOD02



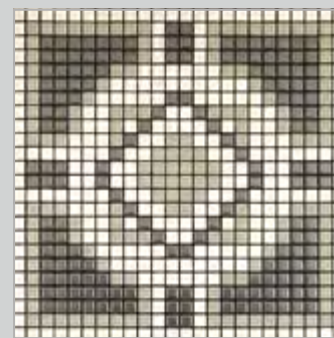
MEMOE02



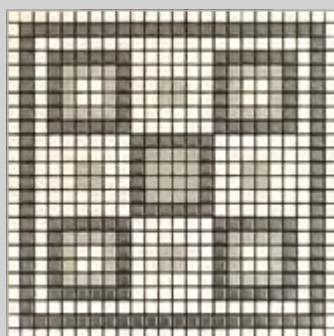
MEMOF02



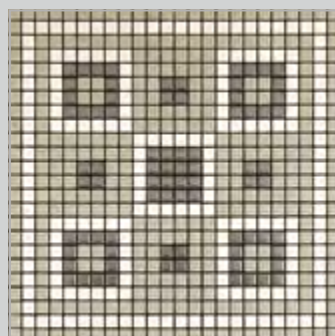
MEMOG02



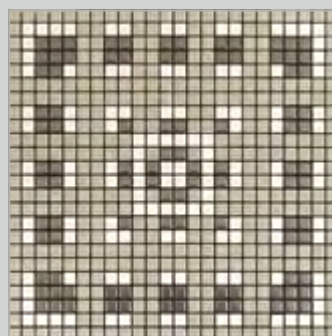
MEMOH02



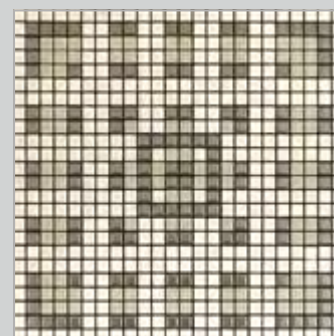
MEMOI02



MEMOL02



MEMOM02



MEMON02

modulo/module/module/Modul/módulo/модуль/拼图组合  
30 x 30 cm (1,2 x 1,2 cm)  
12"x 12" (0,5"x 0,5")



# memoria luce

## MEMORIA 03

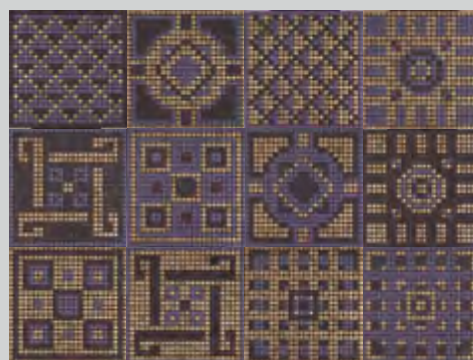
Seta Prugna (07)



Seta Melanzana (06)

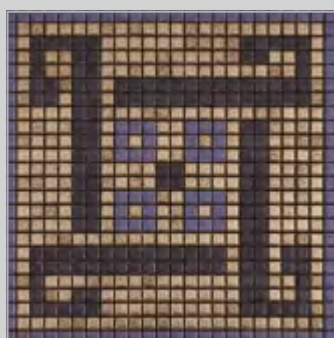


Metallica Bronzo (04)



**MEM0003**

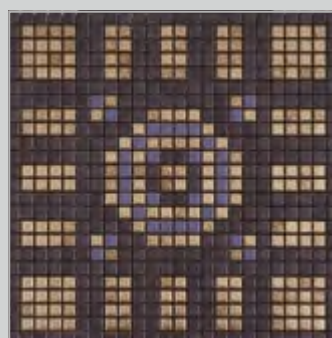
12 pz/pc/stck/шт/片 (1x: da/from "A" a/to "N")



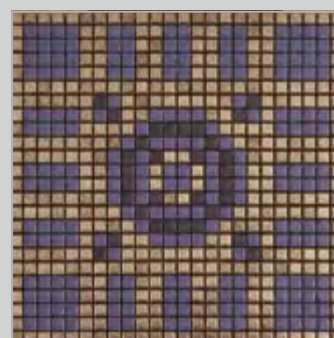
MEM0A03



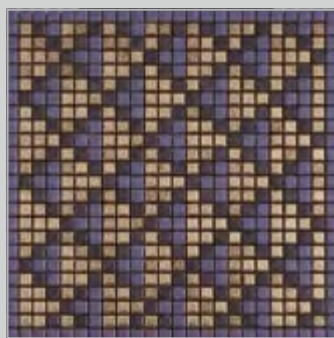
MEM0B03



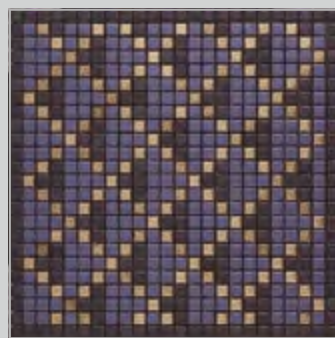
MEM0C03



MEM0D03



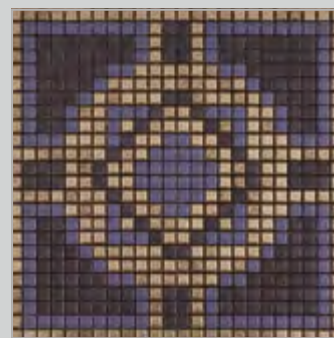
MEM0E03



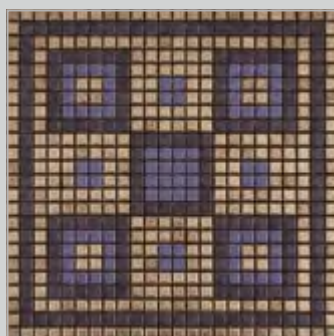
MEM0F03



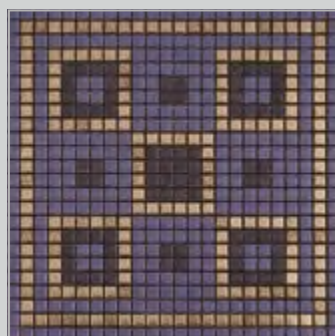
MEM0G03



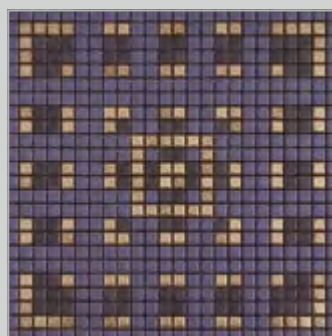
MEM0H03



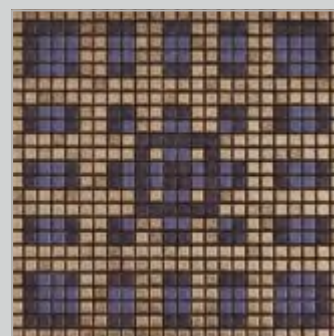
MEM0I03



MEM0L03



MEM0M03



MEM0N03

modulo/module/module/Modul/módulo/модуль/拼图组合  
 30 x 30 cm (1,2 x 1,2 cm)  
 12"x 12" (0,5"x 0,5")



# memoria luce

## MEMORIA 04

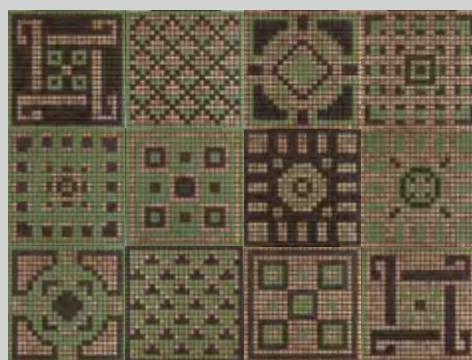
Seta Oliva (10)



Seta Cacao (05)

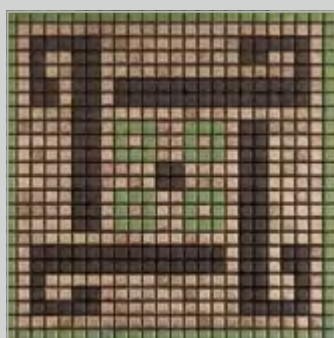


Matallica Bronzo (04)



**MEM0004**

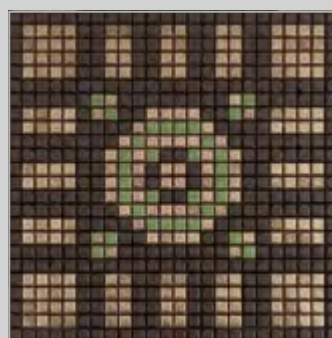
12 pz/pc/stck/шт/片 (1x: da/from "A" a/to "N")



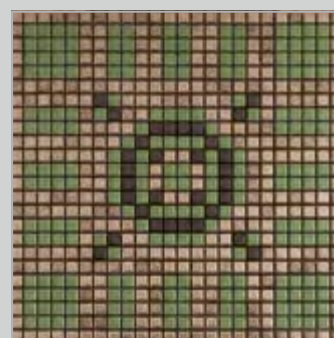
MEM0A04



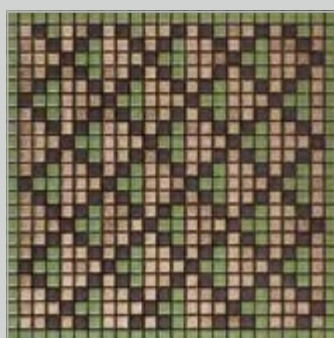
MEM0B04



MEM0C04



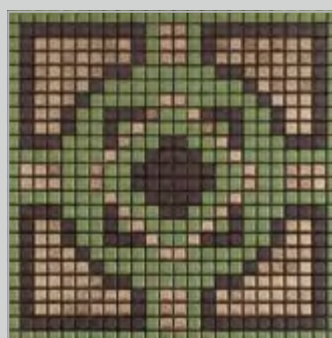
MEM0D04



MEM0E04



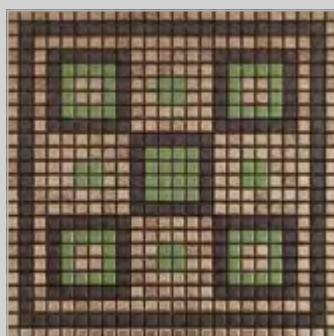
MEM0F04



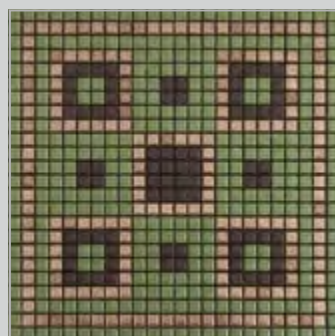
MEM0G04



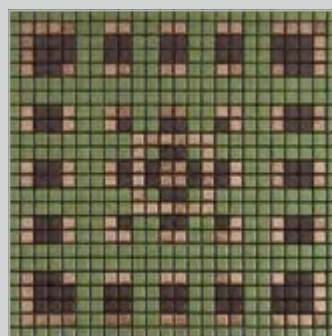
MEM0H04



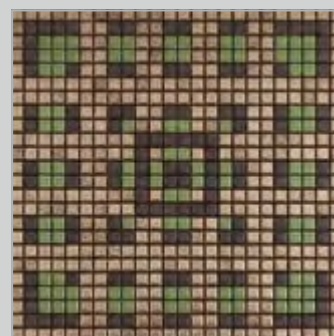
MEM0I04



MEM0L04



MEM0M04



MEM0N04

modulo/module/module/Modul/módulo/модуль/拼图组合  
30 x 30 cm (1,2 x 1,2 cm)  
12"x 12" (0,5"x 0,5")



# memoria luce

## MEMORIA 05

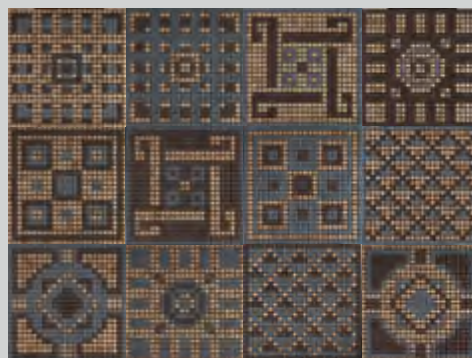
Seta Fumo (03)



Seta Cacao (05)

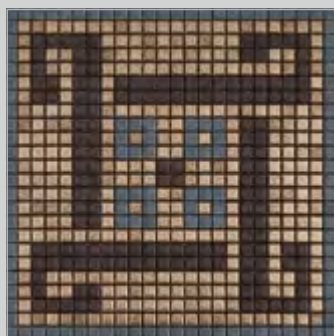


Metallica Bronzo (04)

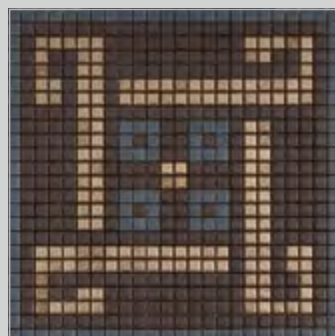


**MEM005**

12 pz/pc/stck/шт/片 (1x: da/from "A" a/to "N")



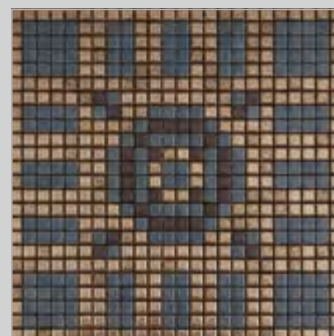
MEM0A05



MEM0B05



MEM0C05



MEM0D05



MEM0E05



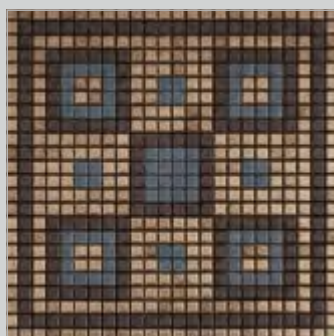
MEM0F05



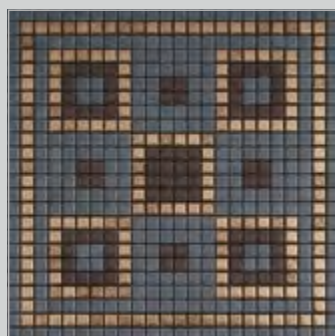
MEM0G05



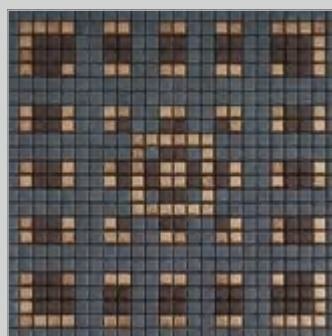
MEM0H05



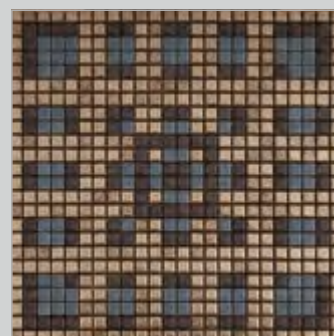
MEM0I05



MEM0L05



MEM0M05



MEM0N05

modulo/module/module/Modul/módulo/модуль/拼图组合  
 30 x 30 cm (1,2 x 1,2 cm)  
 12"x 12" (0,5"x 0,5")



# memoria luce

## MEMORIA 06

Seta Nuvola [02]



Seta Mirto [09]



Metallica Alluminio [06]

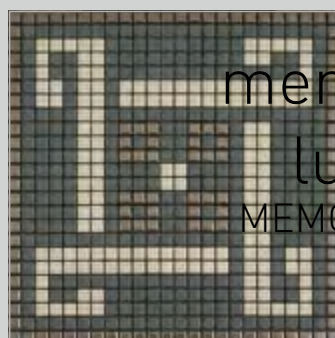


**MEM0006**

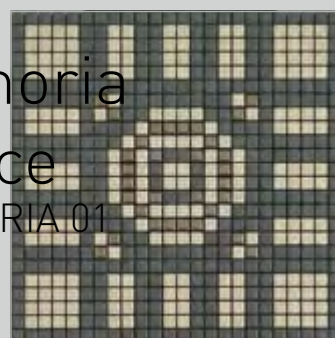
12 pz/pc/stck/шт/片 (1x: da/from "A" a/to "N")



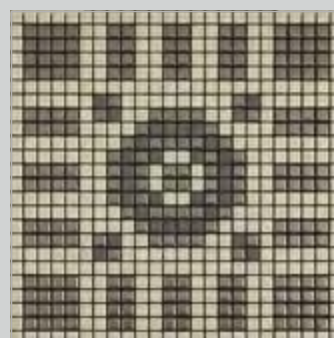
MEMOA06



MEMOB06



MEMOC06



MEMOD06



MEMOE06



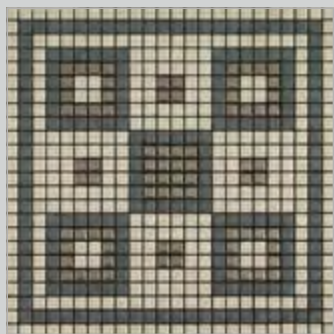
MEMOF06



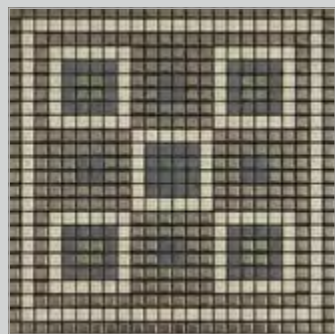
MEMOG06



MEMOH06



MEMOI06



MEMOL06



MEMOM06



MEMON06

memoria  
luce  
MEMORIA 01

modulo/module/module/Modul/módulo/модуль/拼图组合  
30 x 30 cm (1,2 x 1,2 cm)  
12"x 12" (0,5"x 0,5")



# memoria ombra

## MEMORIA 07

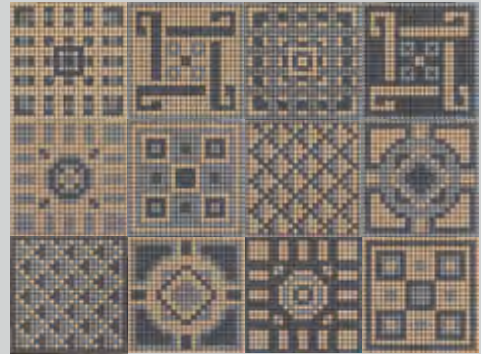
Open Space Zirconio (07)



Open Space Ankerite (02)



Open Space Ematite (03)

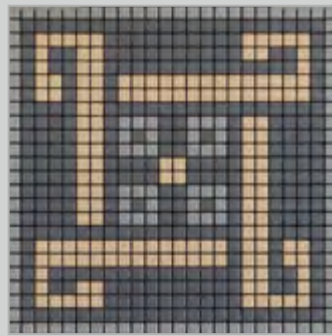


**MEM007**

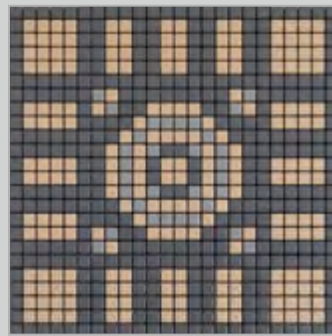
12 pz/pc/stck/шт/片 (1x: da/from "A" a/to "N")



MEMOA07



MEMOB07



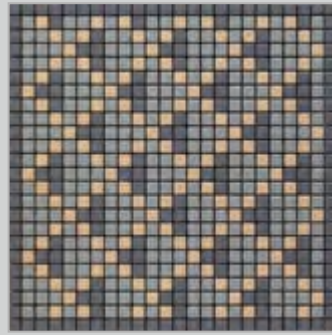
MEMOC07



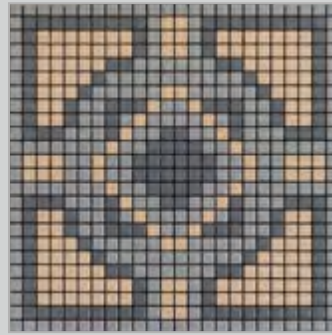
MEMOD07



MEMOE07



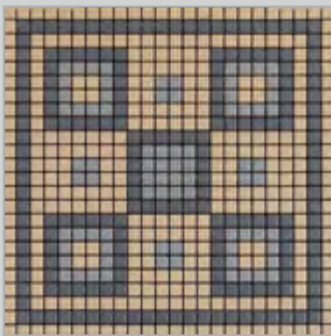
MEMOF07



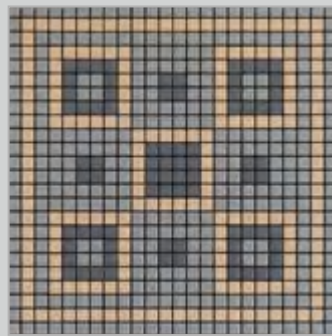
MEMOG07



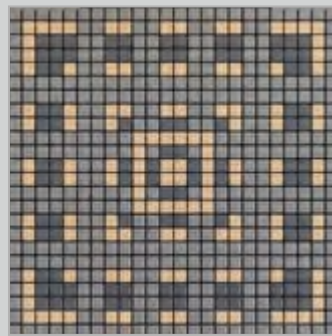
MEMOH07



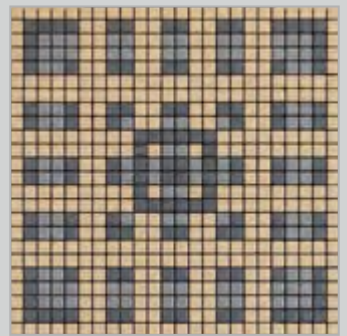
MEMOI07



MEMOL07



MEMOM07



MEMON07

modulo/module/module/Modul/módulo/модуль/拼图组合  
 30 x 30 cm (1,2 x 1,2 cm)  
 12"x 12" (0,5"x 0,5")



# memoria ombra

## MEMORIA 08

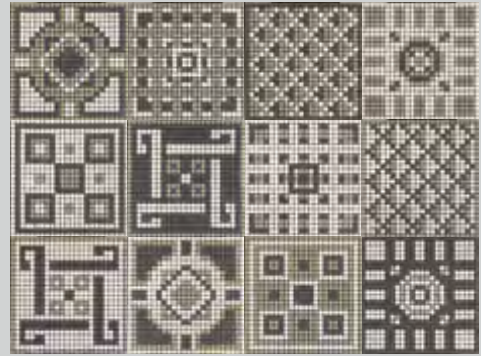
Open Space Calcite (01)



Open Space Vanadio (06)



Open Space Ematite (03)

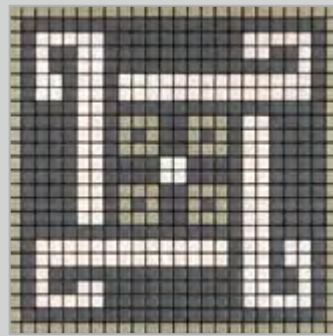


**MEM008**

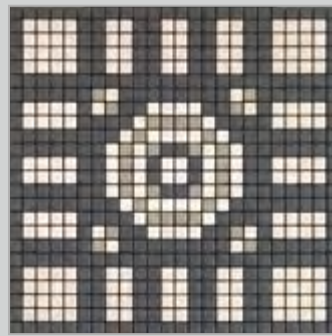
12 pz/pc/stck/шт/片 (1x: da/from "A" a/to "N")



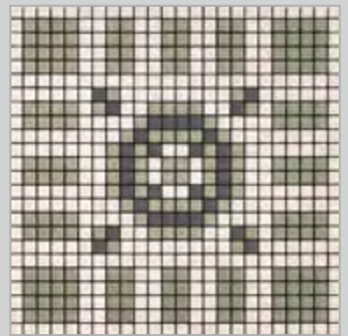
MEMOA08



MEMOB08



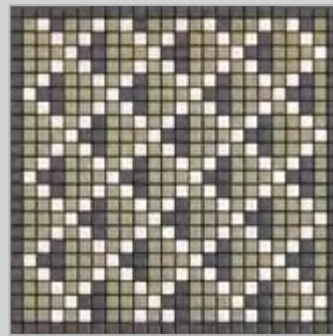
MEMOC08



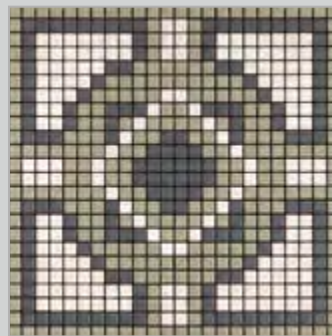
MEMOD08



MEMOE08



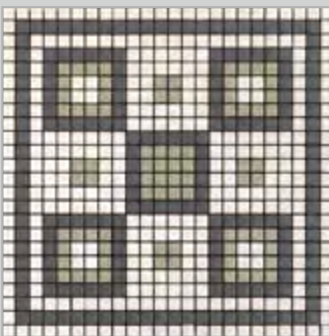
MEMOF08



MEMOG08



MEMOH08



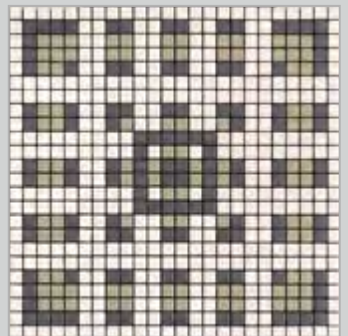
MEMOI08



MEMOL08



MEMOM08



MEMON08

modulo/module/module/Modul/módulo/модуль/拼图组合  
30 x 30 cm (1,2 x 1,2 cm)  
12"x 12" (0,5"x 0,5")



# memoria ombra

## MEMORIA 09

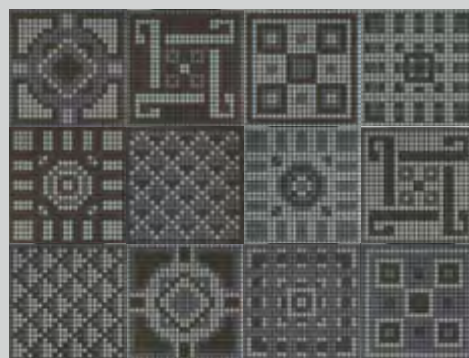
Open Space Ankerite (02)



Open Space Ematite (03)

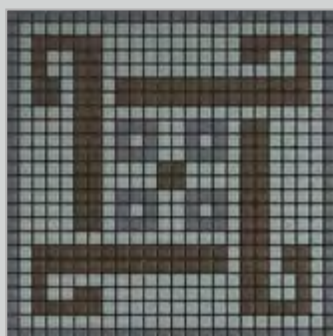


Open Space Rutile (04)



**MEM009**

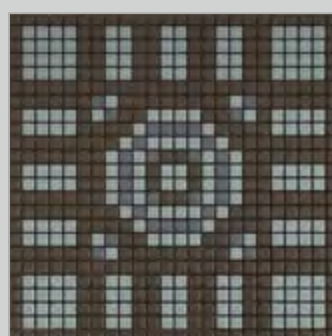
12 pz/pc/stck/шт/片 (1x: da/from "A" a/to "N")



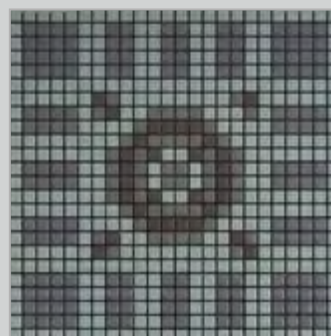
MEMOA09



MEMOB09



MEMOC09



MEMOD09



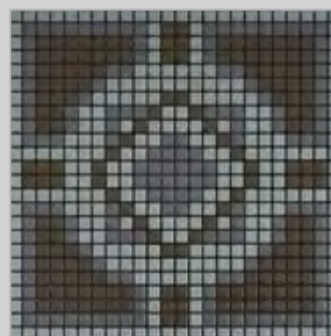
MEMOE09



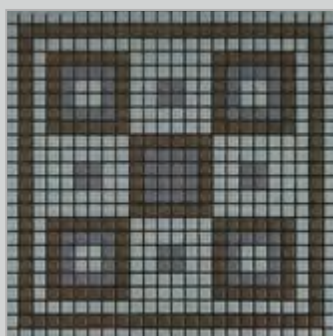
MEMOF09



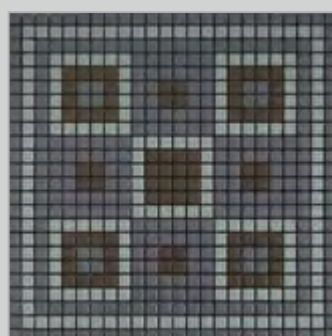
MEMOG09



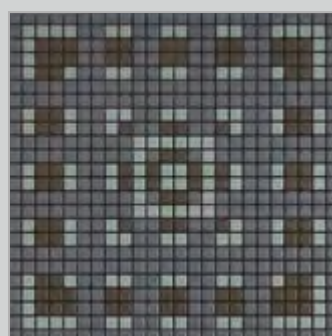
MEMOH09



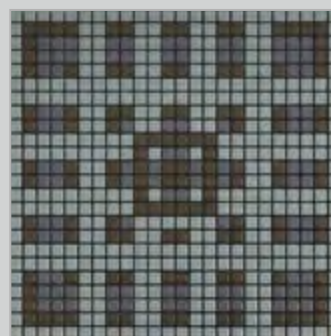
MEMOI09



MEMOL09



MEMOM09



MEMON09

modulo/module/module/Modul/módulo/модуль/拼图组合  
 30 x 30 cm (1,2 x 1,2 cm)  
 12"x 12" (0,5"x 0,5")

# memoria ombra

## MEMORIA 10

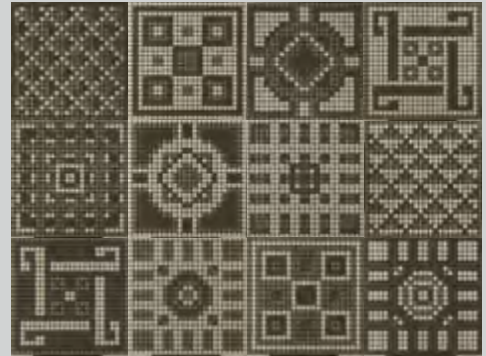
Open Space Vanadio (06)



Open Space Ramina (05)



Open Space Rutile (04)

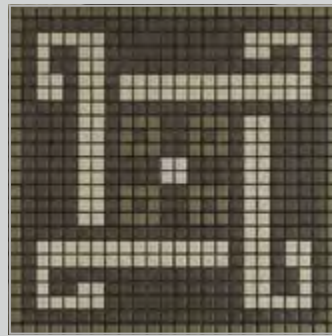


**MEMO010**

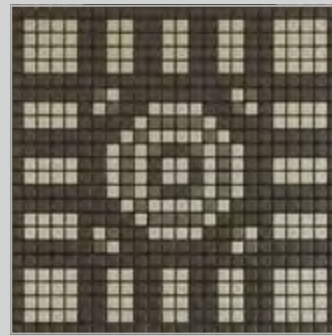
12 pz/pc/stck/шт/片 (1x: da/from "A" a/to "N")



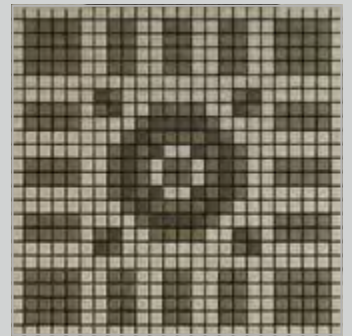
MEMOA10



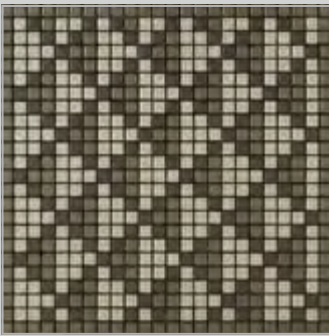
MEMOB10



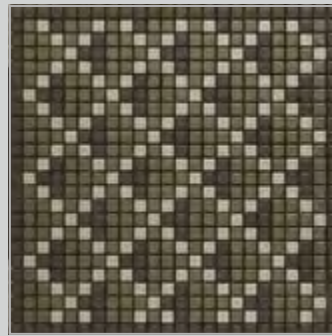
MEMOC10



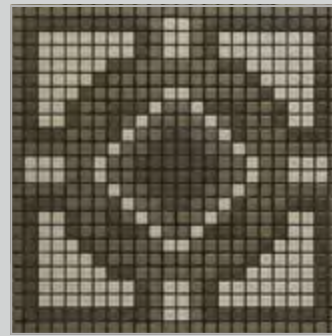
MEMOD10



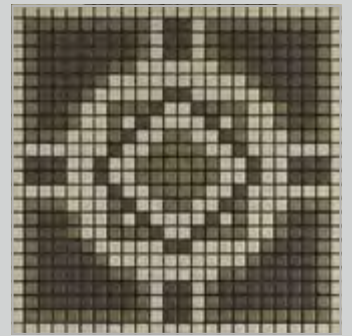
MEMOE10



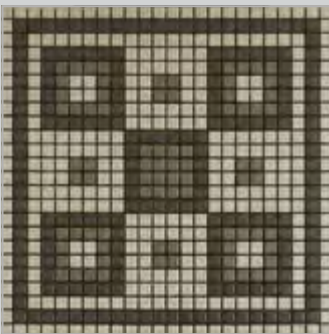
MEMOF10



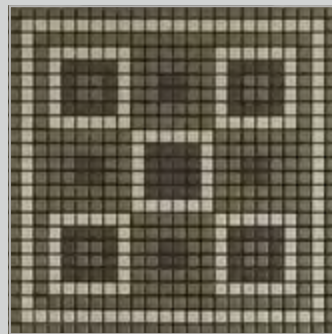
MEMOG10



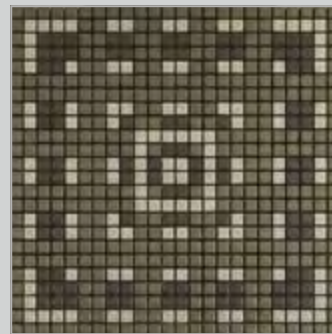
MEMOH10



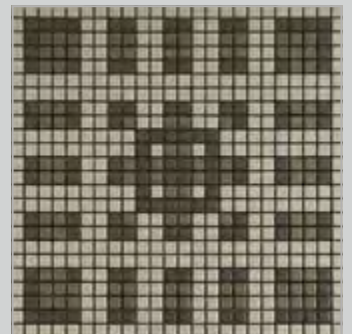
MEMOI10



MEMOL10



MEMOM10



MEMON10

modulo/module/module/Modul/módulo/модуль/拼图组合  
30 x 30 cm (1,2 x 1,2 cm)  
12"x 12" (0,5"x 0,5")



# memoria ombra

## MEMORIA 11

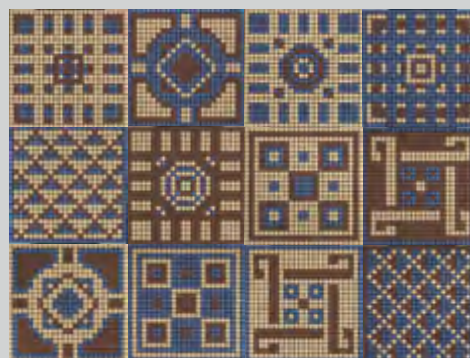
Open Space Zirconio (07)



Open Space Ferro (10)

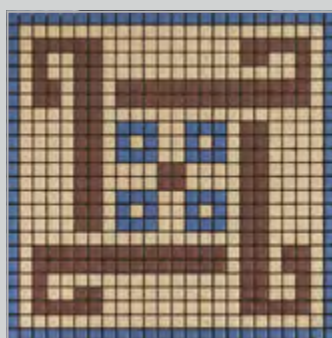


Open Space Azzurrite (12)

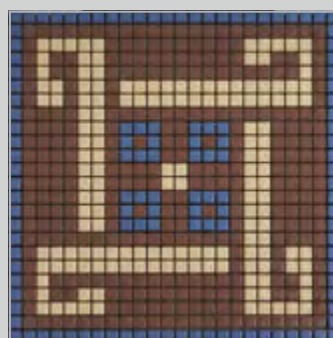


**MEM0011**

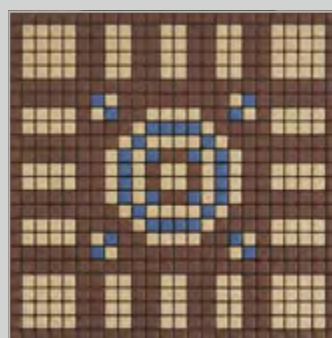
12 pz/pc/stck/шт/片 (1x: da/from "A" a/to "N")



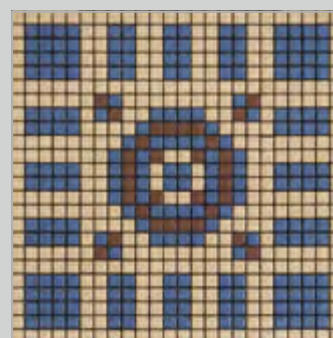
MEM0A11



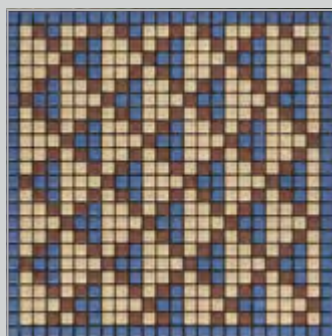
MEM0B11



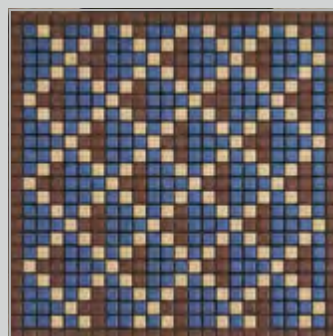
MEM0C11



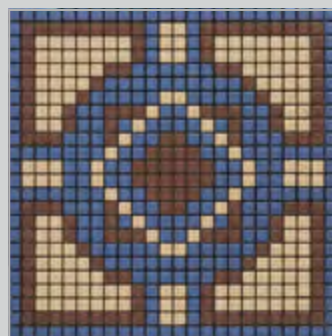
MEM0D11



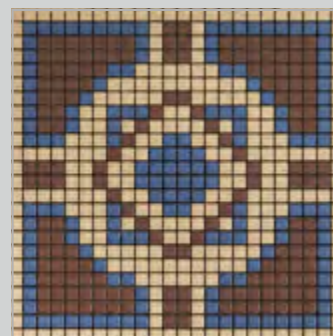
MEM0E11



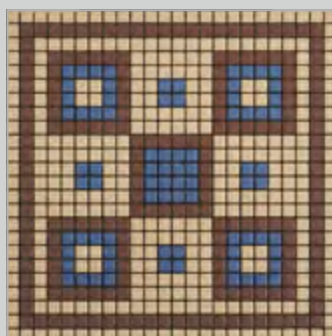
MEM0F11



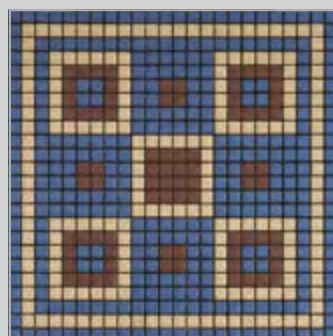
MEM0G11



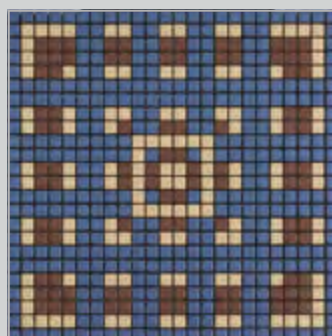
MEM0H11



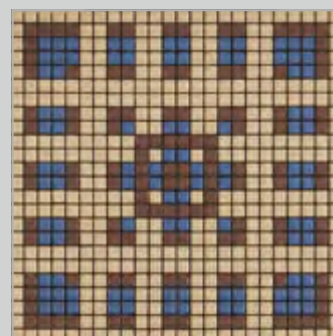
MEM0I11



MEM0L11



MEM0M11



MEM0N11

modulo/module/module/Modul/módulo/модуль/拼图组合  
30 x 30 cm (1,2 x 1,2 cm)  
12"x 12" (0,5"x 0,5")



# memoria ombra

## MEMORIA 12

Open Space Vanadio (06)



Open Space Ferro (10)

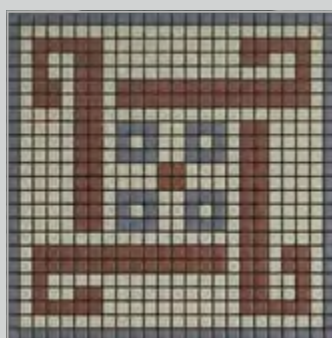


Open Space Ematite (03)

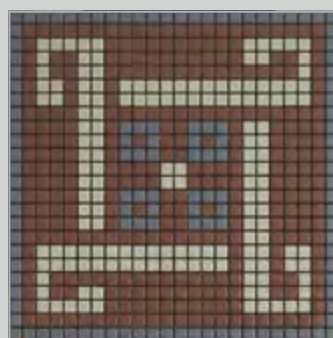


**MEM0012**

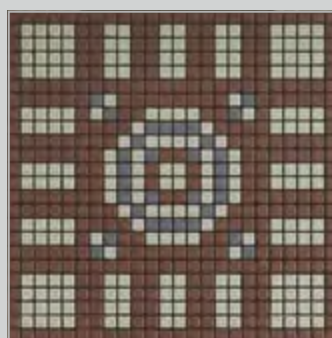
12 pz/pc/stck/шт/片 (1x: da/from "A" a/to "N")



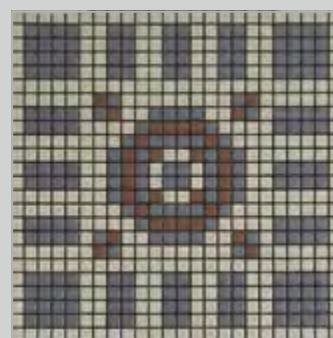
MEM0A12



MEM0B12



MEM0C12



MEM0D12



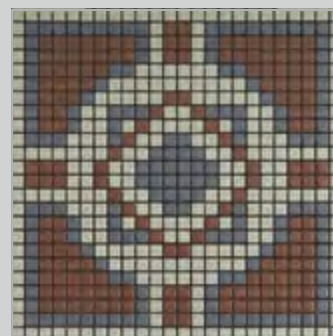
MEM0E12



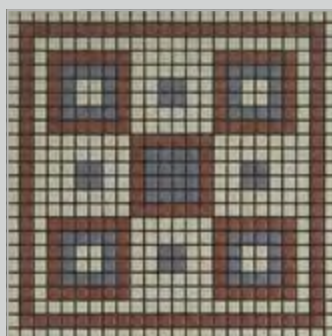
MEM0F12



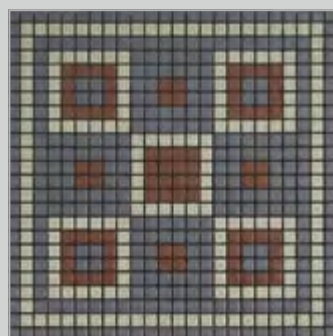
MEM0G12



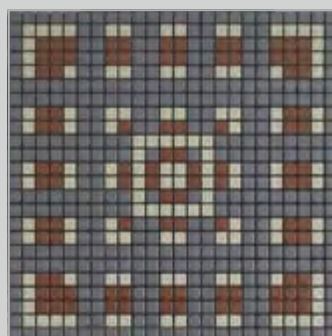
MEM0H12



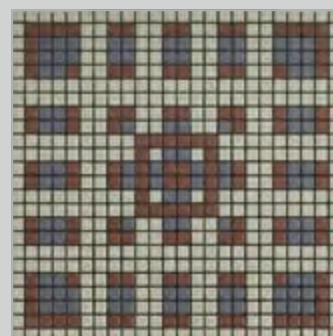
MEM0I12



MEM0L12



MEM0M12



MEM0N12

modulo/module/module/Modul/módulo/модуль/拼图组合  
30 x 30 cm (1,2 x 1,2 cm)  
12"x 12" (0,5"x 0,5")





Monopressocottura Appiani  
Appiani single press-firing  
Monocuisson sous pression Appiani  
Appiani Einpressbrandverfahren  
Monococción por prensado Appiani  
Монопрессообжиг Appiani  
Appiani 一次压烧成形

La Monopressocottura consente di ottenere prodotti ceramici dalle caratteristiche pressocchè uniche: smalti e argille, precedentemente atomizzati, vengono uniti per compenetrazione mediante pressatura a secco. Il ciclo di cottura a temperature di oltre 1200 °C pone in risalto le eccezionali qualità estetiche, di durata e di resistenza del prodotto. Queste caratteristiche rendono tali prodotti ideali per molteplici applicazioni, sia in interno che in esterno, sia per pavimenti che per rivestimenti.

**L'aspetto:** lati perpendicolari e leggera stondatura della superficie smaltata, smalto totalmente coprente, lucido, opaco e naturale.

**La manutenzione:** lo smalto non trattiene lo sporco, igiene totale, facile pulizia.

**Le caratteristiche:** elevata resistenza agli urti, alle macchie e alle abrasioni, superfici resistenti agli agenti chimici e alle muffe.

**La versatilità:** adattabilità ad architetture di qualsiasi forma, cambia l'aspetto colorico a seconda del fugante utilizzato.

**L'ambiente:** innovazione tecnologica, controllo delle fasi del ciclo produttivo, costante impegno per la tutela dell'ambiente, prodotti Appiani 100% made in Italy.

Single press-firing makes it possible to obtain ceramic products that are virtually unique: previously-atomised glazes and clays are combined by permeation through dry pressing. The firing cycle at a temperature of over 1200°C enhances the exceptional aesthetic qualities, long life and resistance of the product. These characteristics make the products ideal for a wide range of different applications, both indoors and outdoors, and for both floors and wall tiling.

**Appearance:** perpendicular sides and slightly rounded glazed surface, glossy, matt and natural.

**Maintenance:** glaze does not retain dirt, total hygiene, easy to clean.

**Features:** highly resistant to knocks, stains and abrasion, surfaces resistant to chemical agents and moulds.

**Versatility:** adaptable to any type of architecture, changes the appearance of the colour depending on the grouting.

**The environment:** technological innovation, control of the production cycle steps, ongoing commitment to environmental protection, Appiani products 100% made in Italy.

La monocuisson sous pression permet d'obtenir des produits céramiques dont les caractéristiques sont pratiquement uniques: des émaux et des argiles précédemment atomisés s'interpénètrent par pressage à sec. Grâce à un cycle de cuisson à des températures de plus de 1 200°C, les qualités exceptionnelles du produit en matière d'esthétique, de durabilité et de résistance sont rehaussées. C'est pourquoi ces produits sont particulièrement adaptés à de multiples applications, aussi bien à l'intérieur qu'à l'extérieur, qu'il s'agisse de réaliser un sol ou un revêtement mural.

**L'aspect :** côtés perpendiculaires et arrondi léger de la surface émaillée, émail totalement couvrant, brillant, mat et brut.

**L'entretien :** l'émail ne retient pas les saletés, hygiène totale, excellente nettoyabilité.

**Les caractéristiques :** résistance élevée aux chocs, aux taches et aux abrasions, surfaces résistant aux agents chimiques et aux moisissures.

**L'éclectisme :** prodigieuse capacité d'adaptation aux différents modules d'architecture. C'est un produit qui change de couleur en fonction du coulis de jointoiment utilisé.

**L'environnement :** innovation technologique, contrôle du cycle de production à toutes les étapes, engagement permanent dans la protection de l'environnement, produits Appiani 100 % made in Italy.

Das spezielle Einbrandpressverfahren verleiht keramischen Produkten fast einzigartige Eigenschaften: Glasur und Ton werden nach einer vorherigen Sprühtrocknung vermischt und durchdringen sich bei der Trockenpressung gegenseitig. Der Brennzyklus mit Temperaturen von über 1200°C ermöglicht die außergewöhnlichen ästhetischen Eigenschaften, die Haltbarkeit und Lebensdauer des Produkts. Diese Eigenschaften machen diese Produkte ideal für vielfältige Anwendungen, sowohl in Innen- als auch in Außenbereichen, sowohl für Bodenbeläge als auch für Wandverkleidungen.

**Das Aussehen:** Senkrechte Seiten und leichte Abrundung der glasierten Oberfläche, komplett deckende Glasur, glänzend, matt und naturbelassen.

**Die Wartung:** Der Schmutz bleibt nicht an der Glasur haften, hundertprozentige Hygiene, einfache Reinigung.

**Die Merkmale:** Hohe Stoß-, Flecken- und Abriebfestigkeit, chemisch beständige und schimmelfeste Oberflächen.

**Die Vielseitigkeit:** Anpassung an jede architektonische Form, die farbliche Optik ändert sich je nach dem verwendeten Verfugungsstoff.

**Die Umwelt:** Technologische Innovation, Kontrolle der einzelnen Phasen des Produktionszyklus, ständiger Einsatz für den Umweltschutz, zu 100% in Italien hergestellte Appiani-Produkte.



La Monococción por prensado permite obtener productos cerámicos con características únicas: los esmaltes y arcillas, atomizados precedentemente, son unidos por compenetración mediante prensado en seco. El ciclo de cocción a una temperatura superior a 1200 °C resalta las excepcionales cualidades estéticas, de duración y de resistencia del producto. Por tales características, estos productos son ideales para múltiples aplicaciones, tanto en interiores como en exteriores, para pavimentos y para revestimientos de pared.

**El aspecto:** lados perpendiculares y superficie esmaltada ligeramente redondeada, esmalte totalmente cubriente, brillante, mate y natural.

**El mantenimiento:** el esmalte no retiene la suciedad, higiene total, limpieza fácil.

**Las características:** elevada resistencia a golpes, manchas y abrasiones, superficies resistentes a los agentes químicos y al moho.

**La versatilidad:** adaptable a todo tipo de construcción, cambia el aspecto cromático según el material de rejuntado utilizado.

**El medio ambiente:** innovación tecnológica, control de las fases del ciclo productivos, empeño constante para la protección del medio ambiente, productos Appiani 100% Italianos.

Технология монопрессовки позволяет производить керамические изделия с уникальными свойствами: предварительно распыленные глазурь и глина соединяются путем взаимопроникновения в ходе сухого прессования. Цикл обжига при температуре свыше 1200° позволяет достичь исключительной устойчивости, прочности и совершенства внешнего вида изделия. Эти качества делают керамические изделия монопрессовки идеальными вариантами применения как для укладки внутри помещений, так и снаружи, как для покрытия полов, так и для облицовки стен

**Внешний вид:** перпендикулярность сторон, легкая сглаженность краев и непрозрачный слой эмали, глянцевого, матового и сатинового

**Уход:** эмали не накапливает грязь, тотальная гигиена, легкость в очистке

**Характеристики:** Удароустойчивая, пятностойкая и устойчивая к появлению царапин плитка, Поверхность, устойчивая к воздействию химических веществ и плесени

**Универсальность:** Применимость к любой архитектурной форме, меняет цветовой облик в зависимости от используемой затирочной смеси.

**Окружающая среда:** технологические нововведения, контроль всех стадий производственного цикла, постоянная забота о защите окружающей среды, продукция Appiani 100% made in Italy.

一次压烧成形 (Monopressocottura) 专利技术造就产品的独特品质: 成微粒状的彩釉和陶土, 通过干压互相渗透, 超过摄氏1200的高温烧制极大的提高了产品的美感和耐用性。Appiani马赛克的独特品质使其无论用于室内或室外, 墙壁或地面, 皆为理想之选。

**产品外观:** 侧面垂直, 釉面略微圆滑, 釉面具有光亮, 哑光和自然表面。

**清洁维护:** 釉料具有抗污性, 卫生洁净, 易于清洁。

**产品特性:** 高耐撞击性、抗污性及耐磨性, 表面具有抗化学及霉菌腐蚀性。

**产品应用:** 适用于各种建筑类型, 根据所使用的水泥浆改变外观颜色。

**环境保护:** 技术的革新, 生产流程的监控, 环境保护的不懈承诺, Appiani 马赛克100% 意大利制造。

PRODUCT MANAGEMENT:  
Arch. Tommaso Gagliardi

ART DIRECTION & GRAPHIC DESIGN:  
Christoph Radl, Antonella Provasi

PRESS OFFICE:  
Sabrina Giacchetti

PHOTOS:  
Photofoyer/Irene De Luca:  
Arcaid (pag. 5, 12-13, 15, 19, 34-35, 57), Montse Garriga Grau  
(pag. 44, 47), Grazia Ike Branco (pag. 10, 29, 31, 39, 51, 52),  
Gaelle Le Boulicaut (pag. 3, 9, 20, 22-23, 25, 40-41, 48-49),  
Erick Sallet (pag. 17 [rbcmobilier.com], 18, 33), Joanna Siedlar  
(pag. 55), Viewpictures (pag. 6-7, 26, 43 [Walters and Cohen,  
www.waltersandcohen.com])

PRODUCTS STILL-LIFE:  
Matteo Imbriani (p. 4, 11, 16, 21, 27, 30, 36, 45, 53, 56)  
Indoor (p. 62-73)

3D MODULATIONS:  
Indoor, Oderzo TV  
Restyle, Milano

PHOTO PROCESSING and COLOR SEPARATIONS:  
Restyle, Milano

PRINT:  
Tipolitografia FG

Febbraio 2014

APPIANI  
31046 Oderzo (TV)  
Italia - Via Pordenone 13  
Tel. +39.0422 502611  
Fax +39.0422 814026  
Fax uffici commerciali +39.0422 502622  
www.appiani.it  
info@appiani.it

Представительство в России  
117292 Москва  
ул. Дмитрия Ульянова, д.16, к.2, оф. 249  
тел. +7 (495) 7249354 - 974 1692  
факс +7 (495) 5434261  
russia@altaeco.com

www.appiani.it

Appiani is a registered trademark of

altaeco

GRUPPO INDUSTRIALE



Le tonalità dei prodotti fotografati  
sono puramente indicative.

The colour shades of the photographed products  
are only for reference.

Les tonalités des produits photographiés  
sont purement indicatives.

Die Farbtöne der fotografierten Produkte  
sind unverbindlich.

Las tonalidades de los productos  
son puramente indicativas.

Цвета изделий на фотографии могут  
отличаться от реальных цветов.

图片颜色和实物有稍微色。



ALTAECO Gruppo Industriale  
è Socio Ordinario del GBC Italia

[www.appiani.it](http://www.appiani.it) 100% MADE IN ITALY

**appiani**