

Collezione

**MOOD
BOARD**

GRES PORCELLANATO RETTIFICATO





SEGNI DI STILE "MOODBOARD": UN VIBRANTE TAPPETO DECORATIVO, UNA TAVOLA DI EMOZIONI PER TRASMETTERE LO STILE E LA RAPPRESENTAZIONE VISIVA DEL PROGETTO. PATTERN DI FORMELLE A CONTRASTO BI-CROMATICO IN GRES PORCELLANATO NEL FORMATO 23,7X23,7 RETTIFICATO. **STYLE TIPS** "MOODBOARD": AN EXCITING DECORATIVE BOARD, A BLEND OF EMOTIONS WHERE FIGURATIVE STYLE AND PRODUCT PORTRAIT ARE WELL REPRESENTED AND DISPLAYED IN A SYMBOLIC VIEW. MADE IN DIFFERENT PATTERNS WHERE 2 COLORS ARE ALTERNATING IN CONTRAST, THIS COLLECTION OF GLAZED PORCELAIN COMES IN THE SIZE 23,7X23,7 RECTIFIED. **SIGNES DE STYLE** "MOODBOARD": UN JEU DE DÉCORS MIX ET DÉCORATIFS DONNANT NAISSANCE À UNE CERTAINE VIBRATION, AINSI QU'UNE GRANDE PALETTE D'ÉMOTIONS POUR TRANSMETTRE LE STYLE ET LA REPRÉSENTATION VISUELLE DU PROJET. 14 MOTIFS DIFFÉRENTS, DE CONTRASTES DICHROMATIQUE DANS LE FORMAT 23,7X23,7 RECTIFIÉE EN GRÈS CÉRAME ÉMAILLÉ. **EIN ZEICHEN VON STIL** "MOODBOARD": EIN AUFREGENDER DEKORATIVER TEPPICH, EINE TAFEL DER EMOTIONEN, DIE DEN STIL UND DIE VISUELLE UMSETZUNG DES PROJEKTS HERVORBRINGEN. GRAPHISCHE MUSTER IN ZWEIFARBIGEM KONTRAST. REKTIFIZIERTES FEINSTEINZEUG IM FORMAT 23,7X23,7 CM. **СТИЛЬНЫЕ ЗНАКИ** "MOODBOARD": ЯРКИЙ ДЕКОРАТИВНЫЙ КОВЁР, КАЛЕЙДОСКОП ЭМОЦИЙ В КОТОРОМ ОТРАЖАЕТСЯ СТИЛЬ И ХАРАКТЕР ПРОЕКТА. ЧЕТЫРНАДЦАТЬ ГЕОМЕТРИЧЕСКИХ РИСУНКОВ В ДВУХ ЧЕРЕДУЮЩИХСЯ В КОНТРАСТЕ, ЦВЕТАХ НА РЕТИФИЦИРОВАННОМ КЕРАМОГРАНИТЕ В ФОРМАТЕ 23,7X23,7



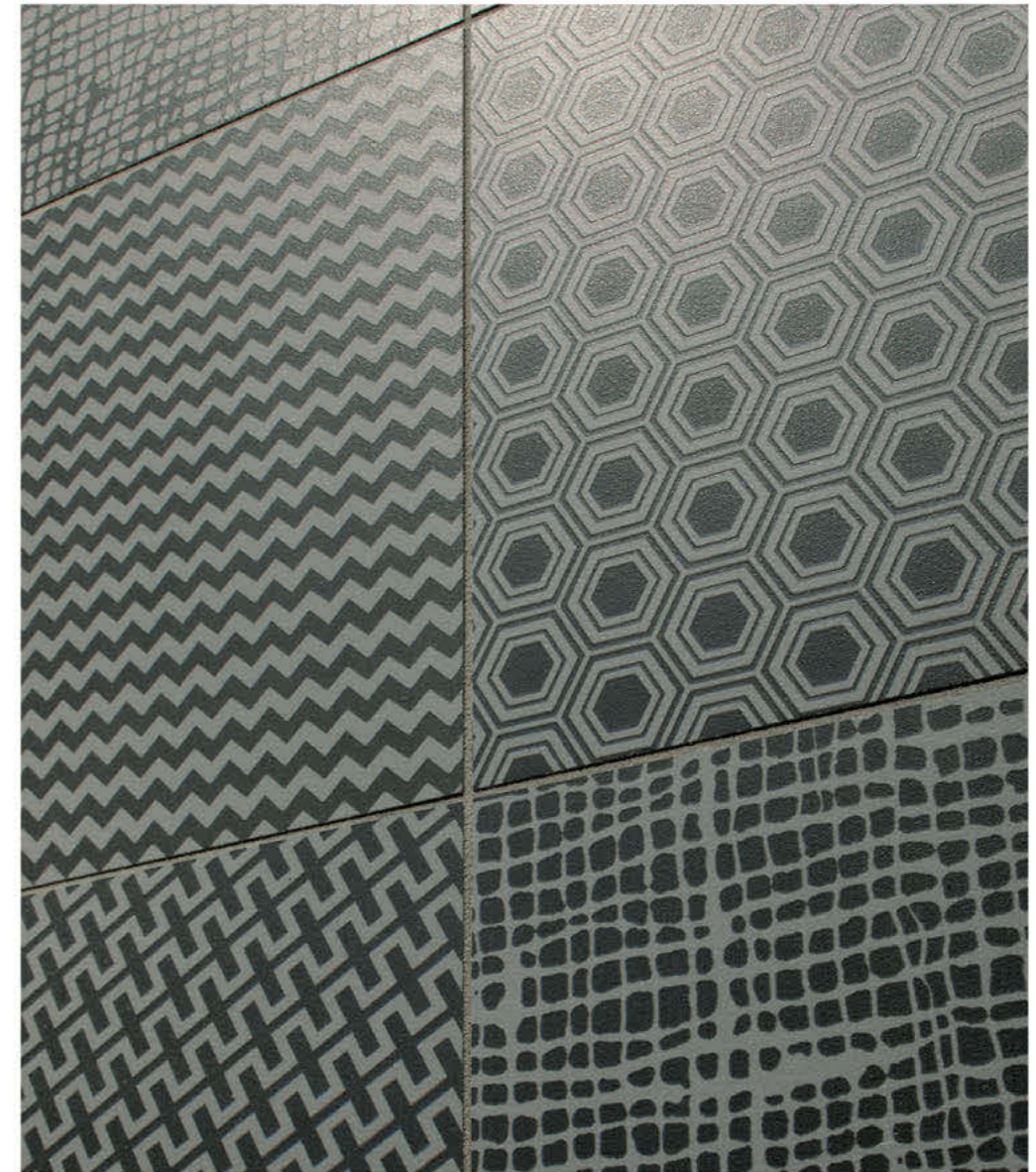
PAV.
MIX "4" DARK GREY / LIGHT GREY 23,7x23,7
MYHOME QUERCIA 23,7x97

RIV.
MIX "4" DARK GREY / LIGHT GREY 23,7x23,7
MYHOME QUERCIA 23,7x97

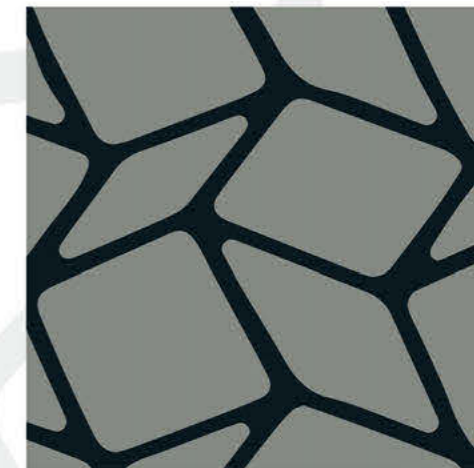




DARK GREY
LIGHT GREY



RIV.
MIX "4" DARK GREY / LIGHT GREY 23,7x23,7
MYHOME QUERCIA 23,7x97

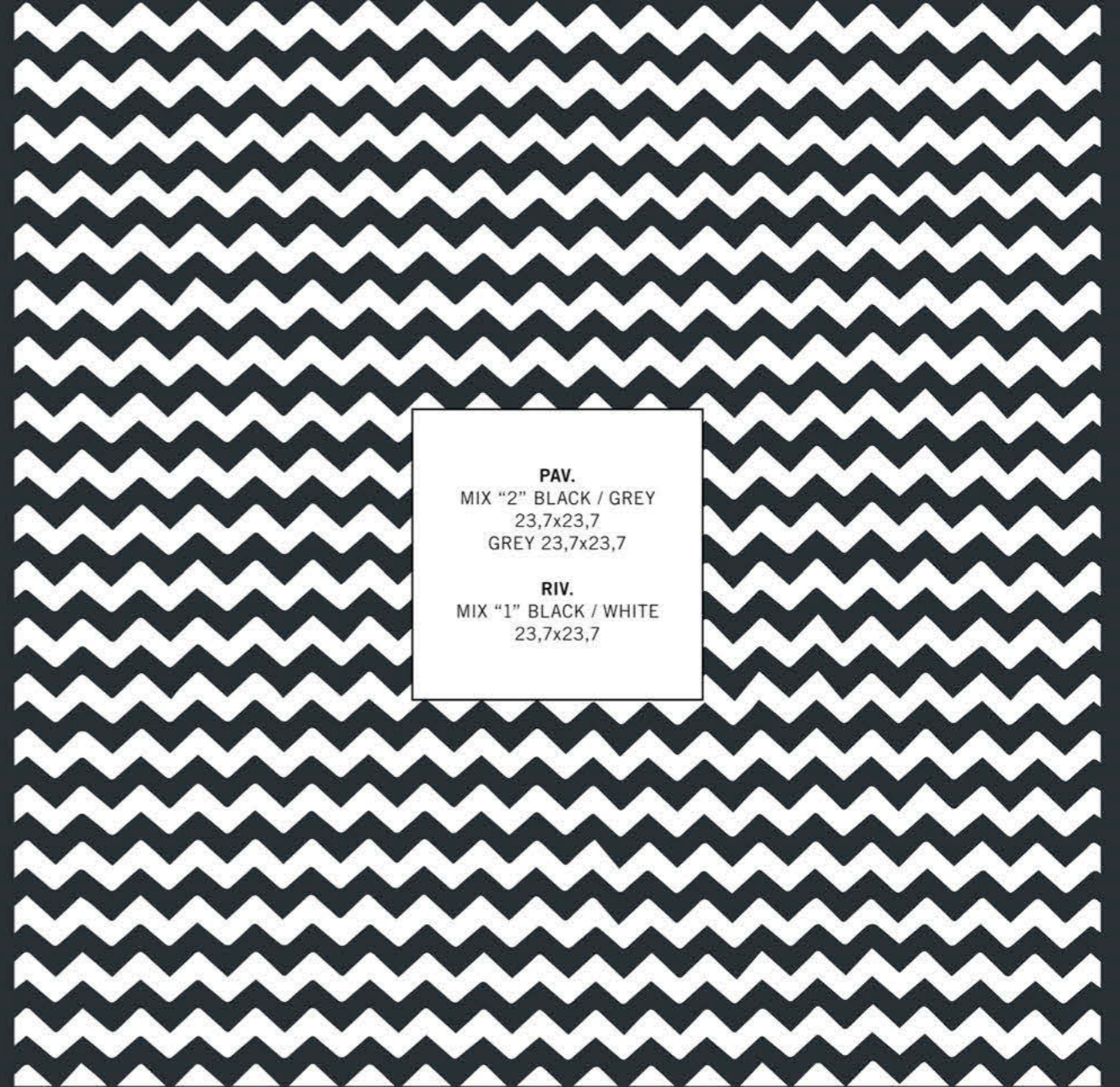


PAV.
MIX "2" BLACK / GREY 23,7x23,7
GREY 23,7x23,7

RIV.
MIX "1" BLACK / WHITE 23,7x23,7
BISTROT BRICK BIANCO 31,9x96,8
BISTROT DEC. BIANCO A 95,7x96,8

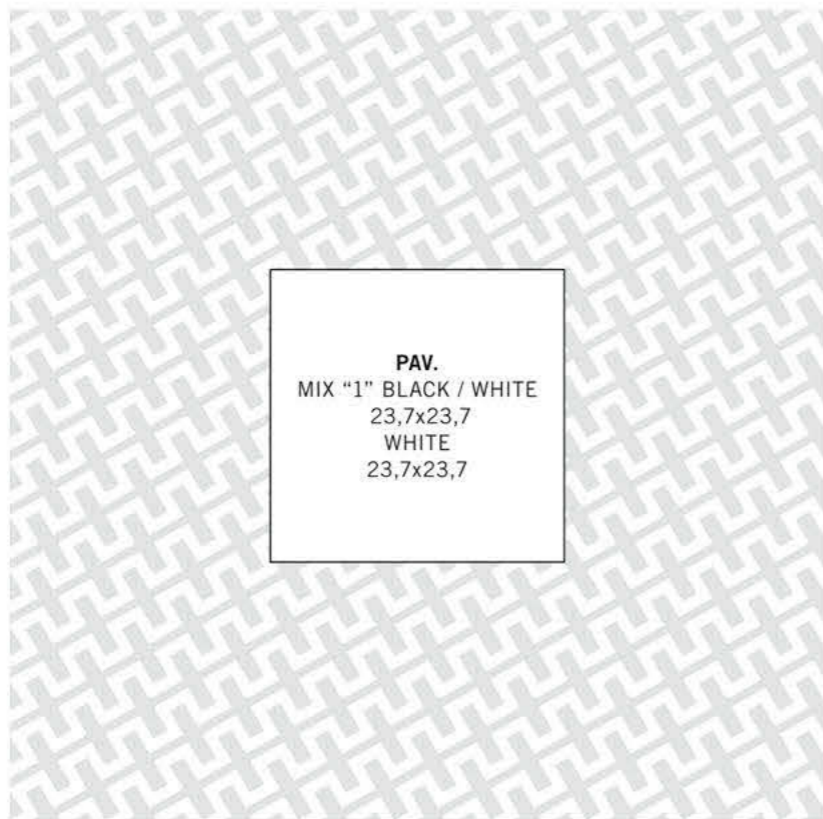


BLACK
GREY





PAV.
MIX "1" BLACK / WHITE 23.7x23.7
WHITE 23.7x23.7





PAV.
MIX "3" BLACK / BLUE 23,7x23,7
BISTROT BIANCO 47,8x47,8

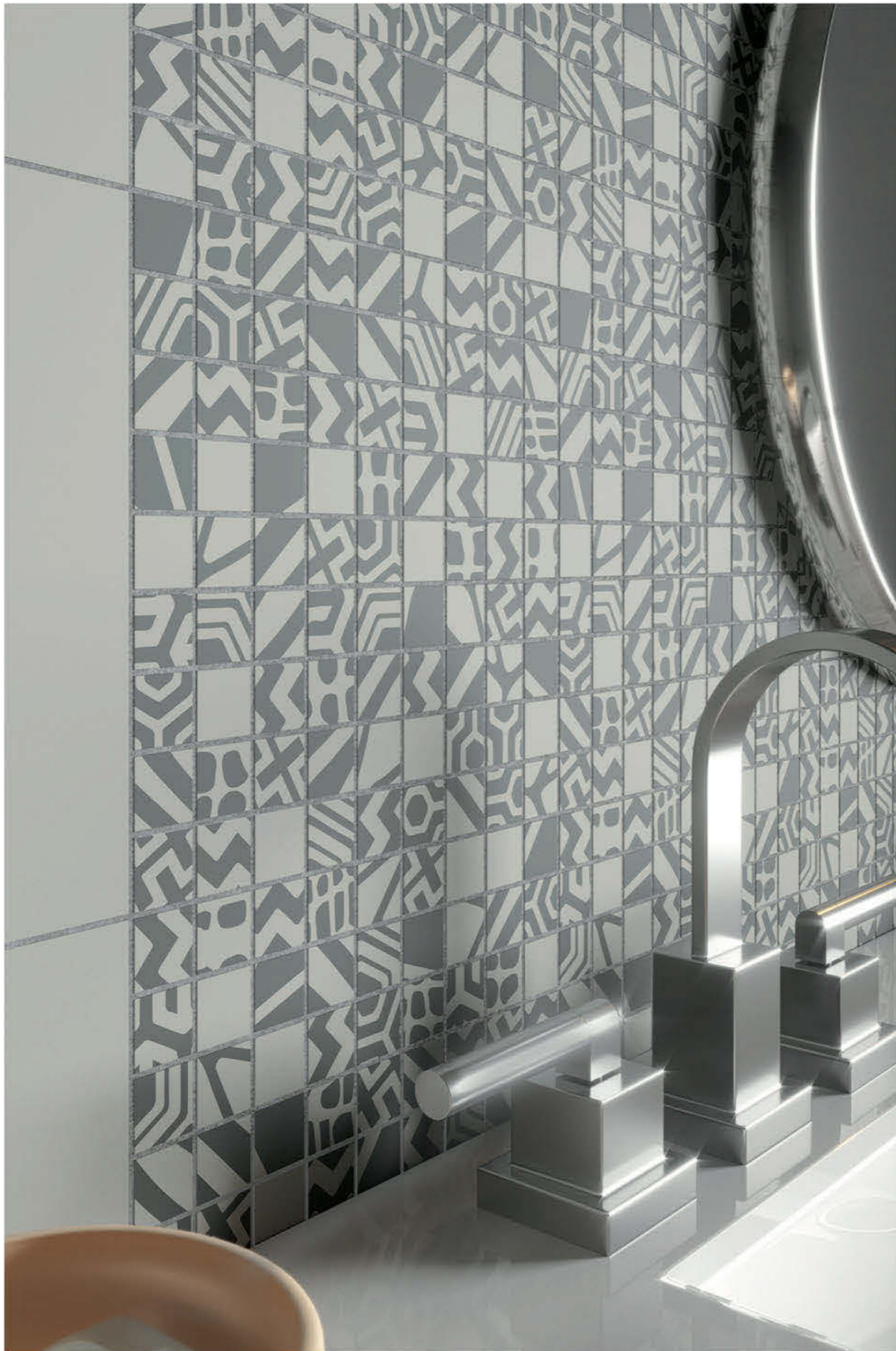
RIV.
MIX "3" BLACK / BLUE 23,7x23,7
BISTROT BIANCO 23,7x97



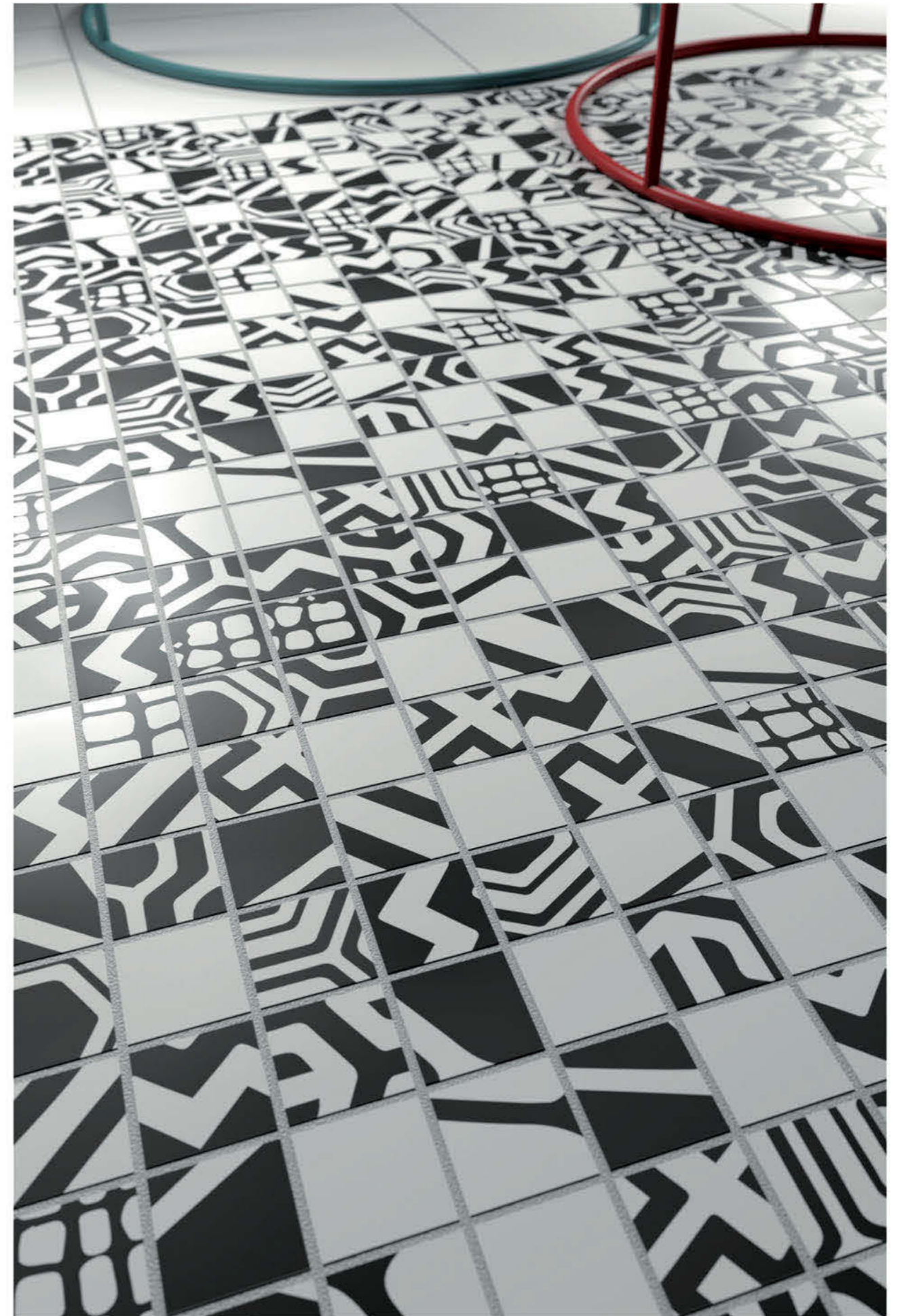
PAV.
MIX "3" BLACK / BLUE
23,7x23,7

BLACK
BLUE

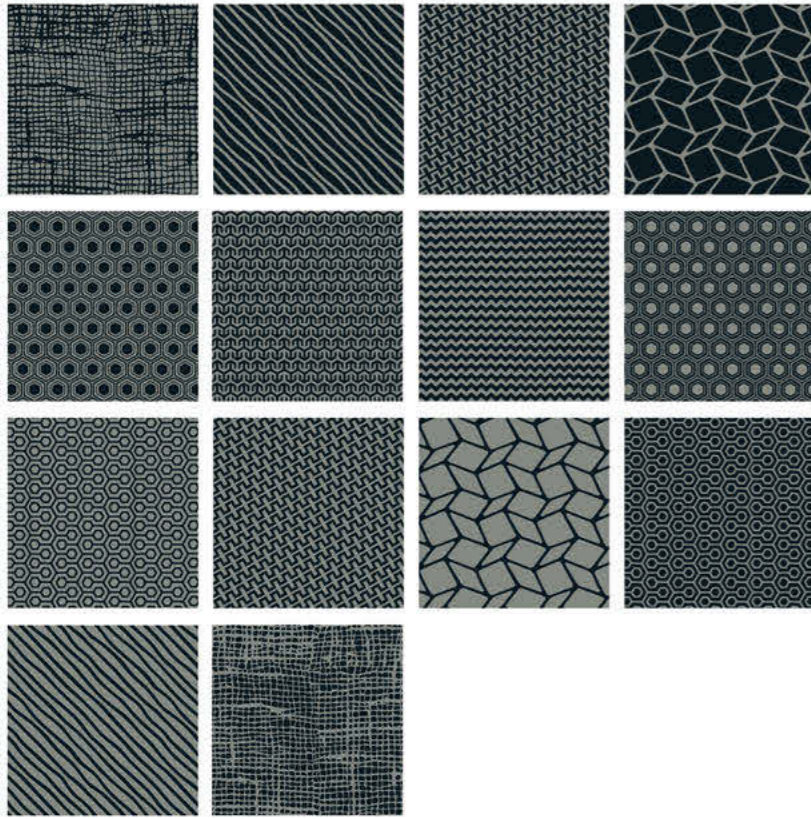




RIV.
MOSAICO MIX "4" DARK GREY / LIGHT GREY 23,7x23,7 . LIGHT GREY 23,7x23,7



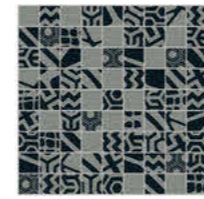
PAV.
MOSAICO MIX "1" BLACK / WHITE 23,7x23,7 . WHITE 23,7x23,7



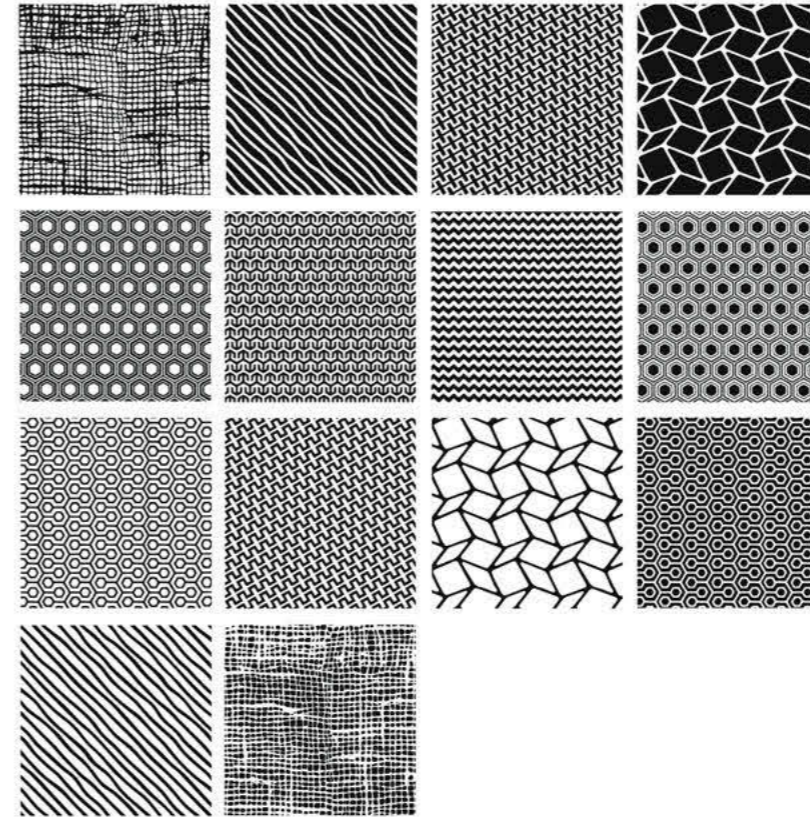
57 **149006** MIX "2" BLACK / GREY
23,7x23,7 . 9"x9" rect.



57 **149017** GREY
23,7x23,7 . 9"x9" rect.



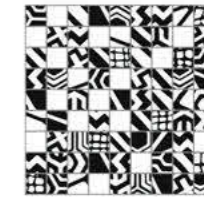
83 **149022** MOSAICO MIX "2" BLACK / GREY
2,4x2,4 su rete 23,7x23,7 . 9"x9" rect.



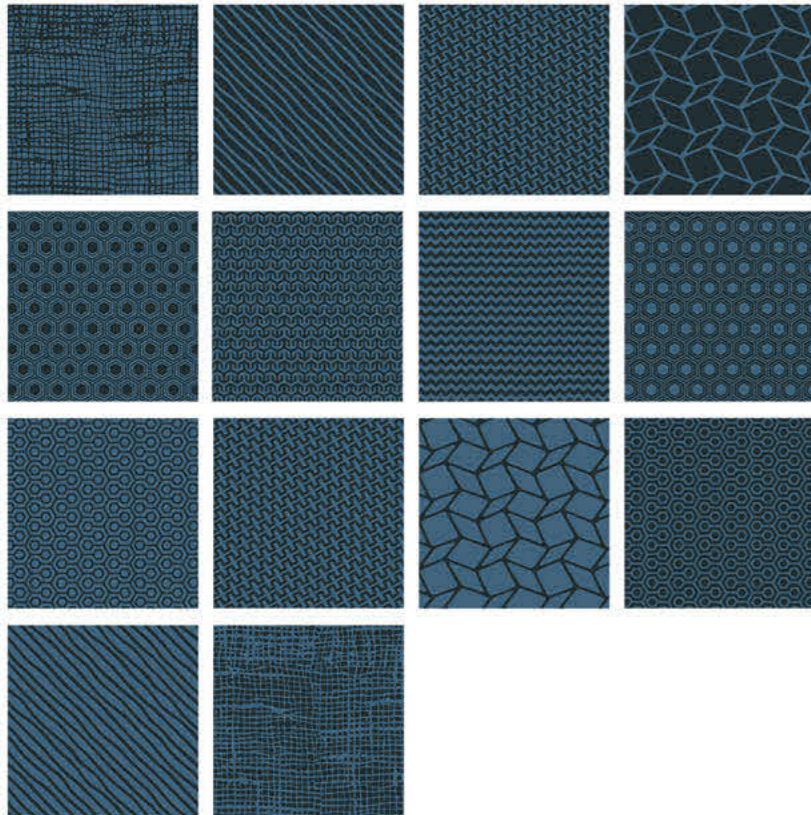
57 **149005** MIX "1" BLACK / WHITE
23,7x23,7 . 9"x9" rect.



57 **149016** WHITE
23,7x23,7 . 9"x9" rect.



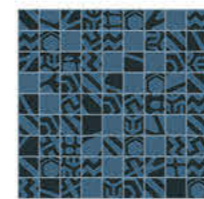
83 **149021** MOSAICO MIX "1" BLACK / WHITE
2,4x2,4 su rete 23,7x23,7 . 9"x9" rect.



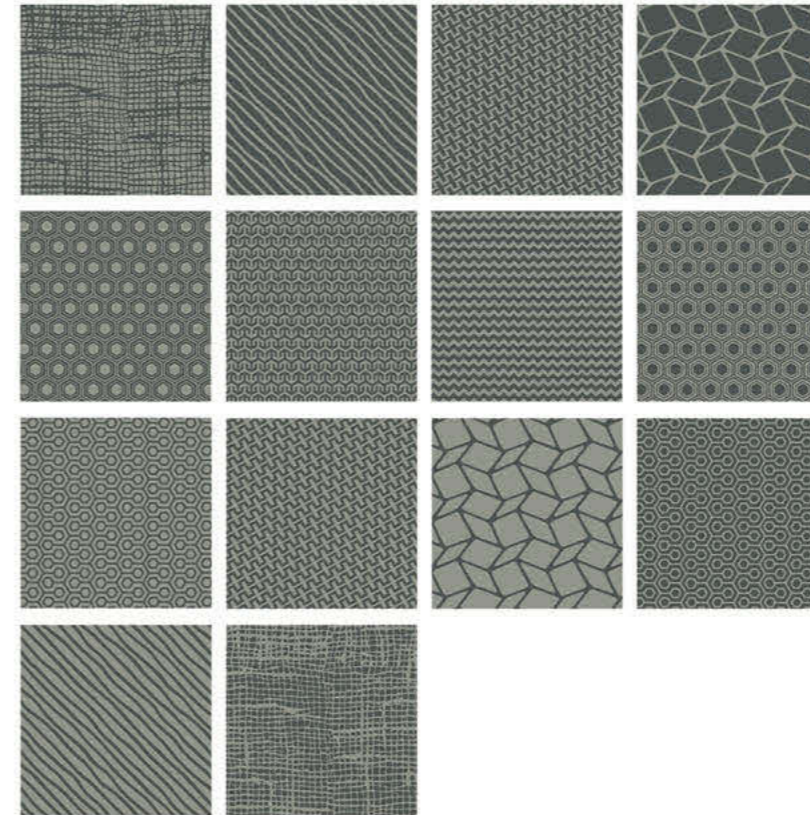
57 **149007** MIX "3" BLACK / BLUE
23,7x23,7 . 9"x9" rect.



57 **149018** BLUE
23,7x23,7 . 9"x9" rect.



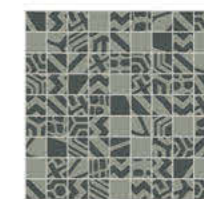
83 **149023** MOSAICO MIX "3" BLACK / BLUE
2,4x2,4 su rete 23,7x23,7 . 9"x9" rect.



57 **149008** MIX "4" DARK GREY / LIGHT GREY
23,7x23,7 . 9"x9" rect.



57 **149019** LIGHT GREY
23,7x23,7 . 9"x9" rect.



83 **149024** MOSAICO MIX "4" DARK GREY / LIGHT GREY
2,4x2,4 su rete 23,7x23,7 . 9"x9" rect.

Caratteristiche tecniche

Technical features . Caracteristiques techniques
Technische Eigenschaften . Технические характеристики

UNI EN ISO 14411 Bla A. G GL








		Metodo di prova Testing method Teste d'essai Pruefmethode Методика испытаний	Valore Value Valeur Wert Величина
	Assorbimento d'acqua Water absorption Absorption d'eau Wasseraufnahme Водопоглощение	ISO 10545.3	<0,5%
	Resistenza alla flessione Bending strength Résistance à la flexion Biegezugfestigkeit Стойкость к изгибу	ISO 10545.4	CONFORME
	Resistenza all'attacco chimico Chemical resistance Résistance à l'attaque chimique Beständigkeit gegen Chemikalien Стойкость к химическому воздействию	ISO 10545.13	A
	Resistenza alle macchie Stain resistance Résistance aux taches Fleckenbeständigkeit Стойкость к образованию пятен	ISO 10545.14	5
	Anti scivolosità Anti-slip index Coéfficient anti-dérapage Trittsicherheitskoeffizient Характеристики устойчивости к скольжению	DIN 51130 DIN 51097 ANSI A 137. 1:2012	R9 A >0,42 wet
	Resistenza all'abrasione Deep abrasion resistance Résistance à l'abrasion Bestimmung des widerstandes gegen tiefen verschleiß-weerstand tegen afschuren стойкость к глубокому истиранию	ISO 10545.7	PEI V
	Determinazione della resistenza al gelo Frost resistance index Coefficient de résistance au gel Feststellung der Frostbeständigkeit Определение морозостойкости	ISO 10545.12	Ingelivo . Frost Proof Ingelif . Frostsicher Морозостойкая

Tabella imballi

Packaging . Emballages
Verpackungen . Упаковка

	Mq x Scat.	Pz x Scat.	Kg x Scat.	Mq x Pall.	Scat x Pall.	Kg x Pall.
Mix 23,7x23,7	1,06	19	23,0	42,4	40	920
Fondi 23,7x23,7	1,06	19	23,0	42,4	40	920
Mosaico Mix 23,7x23,7	0,56	10	11,4			

SETTECENTO
mosaici e ceramiche d'arte



Ceramics of Italy

Ceramiche 'Settecento Valtresinaro
Via del Crociale, 21 - 41042 Fiorano Modenese (MO)
Tel. +39 0536 928711 - Fax +39 0536 928718
www.settecento.com - e-mail: info@settecento.com