

Interiors

Mutina

**A design style to create
original and distinctive interiors.**

Interiors

Interiors è lo strumento sviluppato accuratamente da Mutina per suggerire uno stile di progettazione a partire dalle collezioni ceramiche, usate in modo trasversale e combinate tra loro per creare interni originali e distintivi. I 24 spazi proposti vengono completati da elementi in legno e metallo, pitture e piccoli complementi d'arredo come quelli appartenenti alle collezioni Accents, Margherita Paints e The Cylinder Glass. In questo modo, Mutina vuole fornire delle ispirazioni per la realizzazione di ambienti completi e funzionali dal gusto contemporaneo. Interiors vede la sua prima espressione tangibile nel progetto di Casa Mutina Modena: il nuovo spazio prende vita attraverso un mix di colori, texture e materiali, mostrando le molteplici combinazioni possibili tra i prodotti dell'azienda, oltre a costituire una residenza per accogliere gli ospiti e i collaboratori che vengono da lontano.

Interiors is a work tool carefully developed by Mutina to suggest a design style starting from the ceramic collections, here used in a transversal way and combined to create original and distinctive spaces. The 24 interior suggestions have been refined with wooden and metal elements, paints and furnishing accessories like those from Accents, Margherita Paints and The Cylinder Glass ranges. Thus, Mutina aims at providing inspirations to realise complete and functional interiors of contemporary taste. Casa Mutina Modena is the first tangible expression of Interiors: the new space comes to life through a mix of colours, textures and materials, showing the various possible combinations between the products of the company, as well as constituting a residence for guests and Mutina staff.

Index

Products	7
Inspirations	21
Technical Features	73

Tiles

3D Elements

Metal

Wood

Accessories

Paints

Tiles

Le collezioni Mutina nascono da un'incessante ricerca di valorizzazione della materia ceramica e sperimentano un'infinita gamma di texture e colori, dai toni neutri e delicati a quelli più audaci e vibranti.

Mutina collections came about from a never-ending effort to bring out the best in ceramic material, experiencing the endless range of textures and colours, spacing from delicate and natural shades to the most bold and vibrant ones.

Azulej
Bas-Relief
Ceramica
Chymia
Cover
Déchirer
Déchirer (La Suite)
Déchirer XL
Diarama
Flow
Folded XL
Folded
Lane
Mattonelle Margherita
Mews
Numi
Phenomenon
Piano
Pico
Primavera
Puzzle
Rombini
Tape
Teknomosaico
Teknotessere
Tex
Tierras
Tratti

by Patricia Urquiola
by Patricia Urquiola
by Silvia Giacobazzi
by Laboratorio Avallone
by Patricia Urquiola
by Patricia Urquiola
by Patricia Urquiola
by Patricia Urquiola
by Hella Jongerius
by Mutina Team
by Raw Edges
by Raw Edges
by Barber & Osgerby
by Nathalie Du Pasquier
by Barber & Osgerby
by Konstantin Grcic
by Tokujin Yoshioka
by Ronan & Erwan Bouroullec
by Ronan & Erwan Bouroullec
by Barber & Osgerby
by Barber & Osgerby
by Ronan & Erwan Bouroullec
by Raw Edges
by Mutina Team
by Mutina Team
by Raw Edges
by Patricia Urquiola
by Inga Sempé



3D Elements

Mutina propone una selezione di elementi tridimensionali, moderni e innovativi, per giocare con gli spazi creando pareti dal gusto architettonico. In questo modo, gli ambienti si animano attraverso inaspettati effetti di luci e ombre.

Mutina provides a selection of modern and innovative three-dimensional elements, to play around with interiors, creating an architectural and aesthetic effect. Thus, spaces come to life through the unexpected play of light and shadows.

Brac
Celosia
Mistral

by Nathalie Du Pasquier
by Patricia Urquiola
by Barber & Osgerby



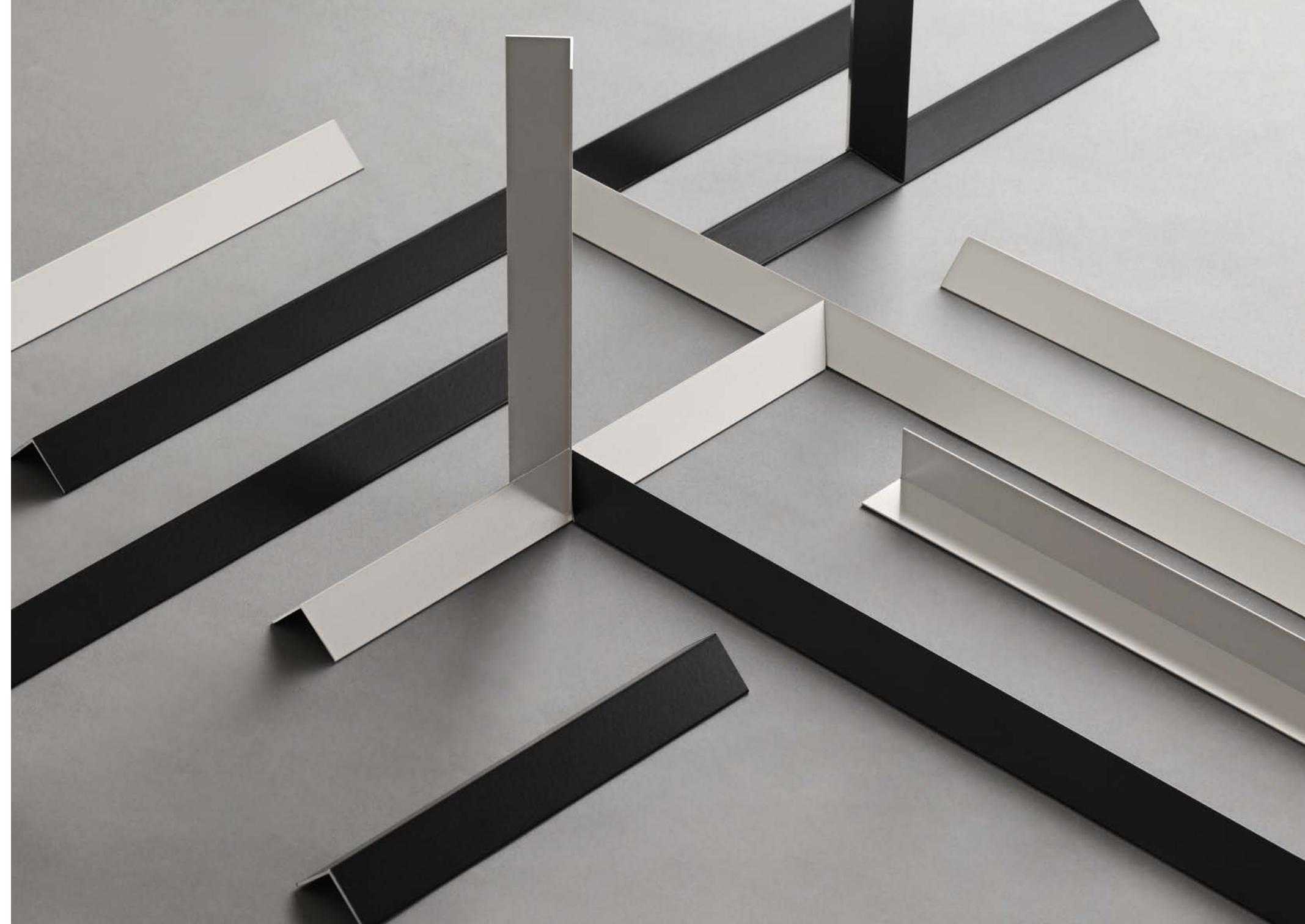
Metal

Accents Metal consiste in una gamma di elementi pensati per interagire con le superfici. Possono essere utilizzati per creare uno stacco tra pavimento e rivestimento, dando vita a morbidi giochi d'ombra che mettono in risalto le pareti ceramiche.

Accents Metal features a range of elements designed to interact with surfaces. They can be used to divide floors and walls, creating soft play of light and shadows that enhance the ceramic tiles.

L Profile Horizontal
L Profile Corner
L Cap Horizontal
L Cap Corner

by OEO Studio



Wood

Gli elementi in legno appartenenti alla collezione Accents sono ideali per creare zoccoli, boiserie e battiscopa, accompagnando il passaggio tra le superfici ceramiche da pavimento a rivestimento. Ogni tipologia è stata declinata in due colorazioni, light e dark.

The wooden elements featured by Accents collection are ideal to create skirtings, boiserie and clogs, supporting the transition between ceramic surfaces from floors to walls. Each variant has been declined in two shades, light and dark.

Wall Panel Corner 100
Wall Panel Corner 160
Wall Panel 100
Wall Panel 160
End Piece S
End Piece L
Skirting S
Skirting L
End Piece Rectangular
Rectangular Skirting

by OEO Studio



Accessories

Mutina propone una selezione di complementi d'arredo funzionali ed estremamente versatili, che appartengono alla gamma di prodotti Accents, e una collezione di vasi in edizione limitata progettata da Laboratorio Avallone, The Cylinder Glass.

Mutina offers a selection of functional and extremely versatile furnishing accessories, that belong to the range of Accents products, and a collection of vases in limited edition designed by Laboratorio Avallone, The Cylinder Glass.

Accents Accessories

Cabinet Large
Cabinet Small
Mirror Large
Mirror Small
Rack 72
Rack 192
Shelf Small
Shelf Large
Towel Rack Large
Towel Rack Tall

Limited edition

The Cylinder Glass
Alto
Medio
Basso

by OEO Studio

by Laboratorio Avallone



Paints

Le pitture Mutina sono pensate appositamente per accompagnare i rivestimenti ceramici dell'azienda, sia in termini di palette che di finish. La gamma comprende 25 proposte colore nelle finiture Matt e Satin e 6 nella variante Limetouch.

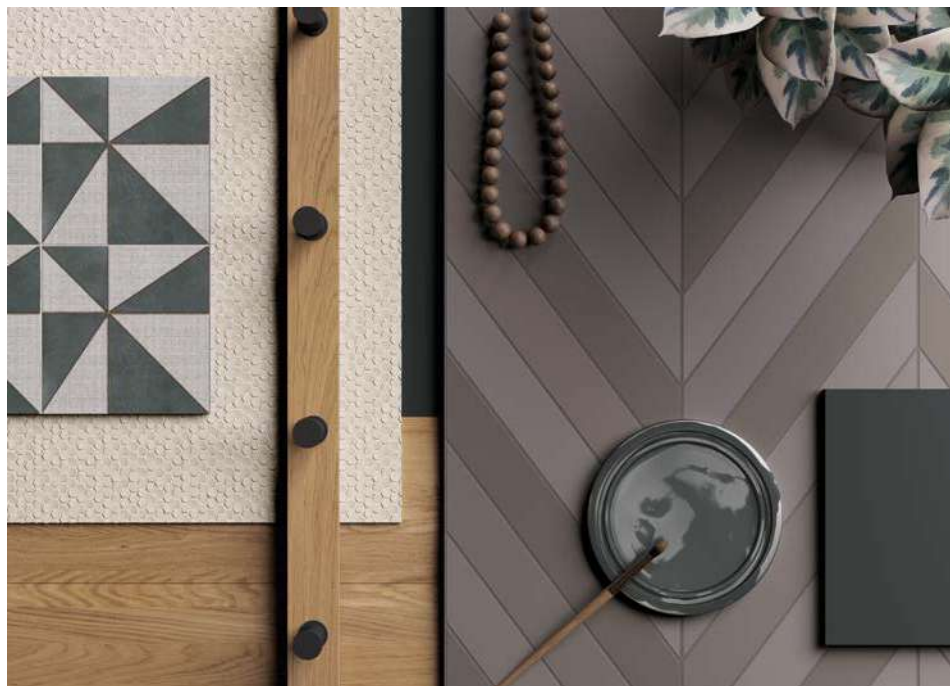
Mutina paints have been specifically developed to be paired with the ceramic tiles of the company, both in terms of palette and finish. The range includes 25 colours declined in the variants Matt and Satin and 6 in the Limetouch finish.

Accents Paints
Margherita Paints

by OEO Studio
by Nathalie Du Pasquier



Inspirations



Floor Mews Lead Chevron 5x40. **Wall** Azulej Gira Nero (right wall). Accents Paints Matt Slate. Phenomenon Honeycomb B Bianco (staircase wall). Accents Wood Skirting S Light Oak, Accents Wood Wall Panel 160 Light Oak (left wall). **Accessories** Accents Accessories Rack 192 Light Oak.





Floor Mattonelle Margherita Flower Green, Mattonelle Margherita Square Blue.
Wall Accents Wood Skirting L Dark Oak, Rombini Triangle Small Green, Accents Paints
 Matt Olive (from below). **Accessories** Accents Accessories Shelf Large Dark Oak.





Floor Azulej Estrela Nero. Wall Accents Wood Skirting S Light Oak, Folded XL, Accents Paints Matt Pearl (from below). Accessories Accents Accessories Shelf Large Light Oak.





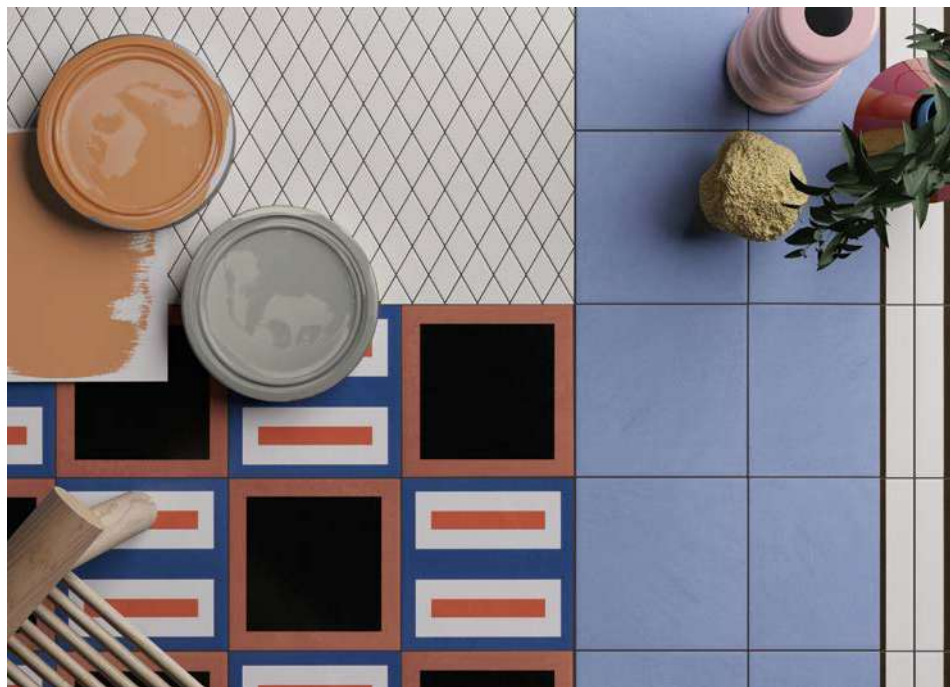
Floor Primavera Nero 120x120. **Wall** Accents Wood Skirting L Light Oak, Primavera Nero 120x240, Accents Wood Rectangular Skirting Light Oak (from below). Accents Paints Limetouch Chalk (ceiling + right wall). Accents Paints Satin Pearl (back wall). **Kitchen Peninsula** Primavera Verde 120x120. **Accessories** Accents Accessories Shelf Large Light Oak.





Floor Chymia Mix 2 White. **Wall** Accents Wood Skirting L Light Oak, Accents Paints Matt Pearl, Accents Paints Matt Pebbles (from below). Accents Wood Wall Panel 100 Light Oak, Accents Paints Matt Pebbles (right wall). **Accessories** Accents Accessories Rack 192 Light Oak.





Floor Mattonelle Margherita Double Red, Mattonelle Margherita Square Terracotta.
Wall Mattonelle Margherita Marghe Light Blue, Mattonelle Margherita Street, Accents Paints Satin Pebbles (from below). Rombini Losange White, Accents Paints Satin Clay (shower).





Floor Déchirer Nero Decor 120x120. **Wall** Accents Wood Skirting L Light Oak, Accents Paints Matt Yarn, Diarama Dusk (from below). **Accessories** Accents Accessories Shelf Large Light Oak.





Floor Tierras Triomix 2. **Wall** Accents Wood Skirting L Dark Oak, Tierras brick 120x120 Accents Wood Rectangular Skirting Dark Oak, Accents Paints Matt Sand (from below). Celosia (central wall).





Floor Tape Base White. **Wall** Accents Wood Skirting L Light Oak, Tape Zig Zag Green, Tape Half Zig Zag Green, Tape Grainy Green, Accents Wood Rectangular Skirting Light Oak (washbasin area). Tape Cobble Green, Tape Half Cobble Green (shower). Accents wood Skirting L Light Oak, Wall Panel 160 Light Oak (right wall). Accents Paints Satin Ivory. **Accessories** Accents Accessories Rack 192 Light Oak, Accents Accessories Cabinet Large Light Oak, Accents Accessories Cabinet Small Light Oak, Accents Accessories Mirror Large Light Oak.



N.10



Floor Puzzle Creta, Puzzle Coal.



Floor Chymia Tassello Black, Chymia Ophelia White. **Wall** Ceramica Bianca (side walls). Chymia Tassello Black, Chymia Ophelia White, Accents Wood Rectangular Skirting Light Oak (back wall). Accents Paints Satin Coal. **Accessories** Accents Accessories Rack 192 Light Oak, Accents Accessories Mirror Small Light Oak, Accents Accessories Towel Rack Large, Accents Accessories Cabinet Large Light Oak, Accents Accessories Cabinet Small Light Oak.





Floor Mattonelle Margherita Star, Mattonelle Margherita Parallel Orange, Mattonelle Margherita Marghe Half Black. **Wall** Mattonelle Margherita Marghe black, Mattonelle Margherita Square Black, Mattonelle Margherita Marghe White, Margherita Paints Verde (from below). Accents Paints Matt Iron (ceiling). Accents Paints Pebbles (back wall).
Accessories The Cylinder Glass Alto Nero, The Cylinder Glass Basso Bianco (on the table).



N.13



Floor Primavera Grigio 120x120.
Wall Phenomenon Rain B Bianco.



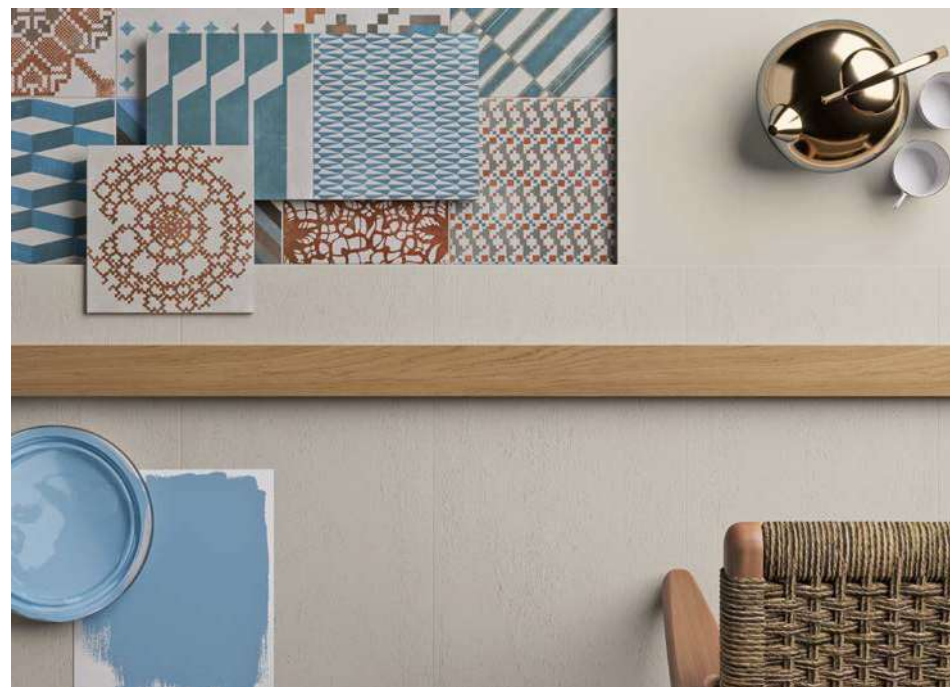
N.14



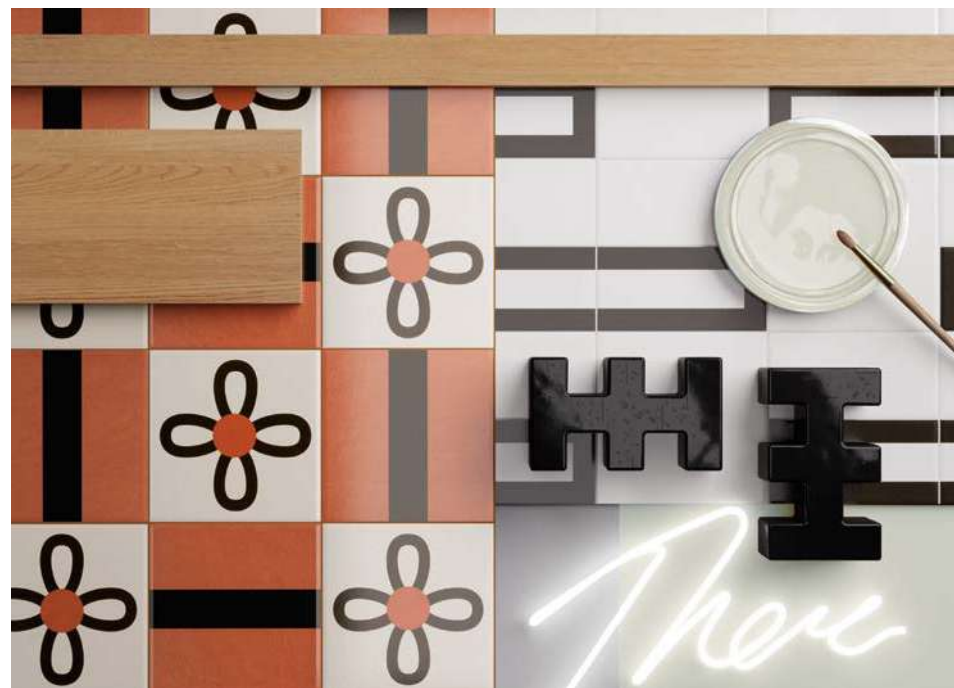
Floor Primavera Grigio 120x120.
Wall Accents Metal L Profile Black, Rombini Triangle Large White (from below).



N.15



Floor Flow White 30x120, Azulej Combination Grigio.
Wall Accents Wood Skirting S Light Oak, Accents Wood Wall Panel 100 Light Oak, Accents Wood Skirting S Light Oak, Accents Paints Matt Pearl, Margherita Paints Azzurro.



Floor Mattonelle Margherita Petals, Mattonelle Margherita Line. **Wall** Mattonelle Margherita Frame Black, Mattonelle Margherita Marghe Half White, Mattonelle Margherita Marghe White. Accents Paints Matt Pearl (from below). Brac Nero (central wall).





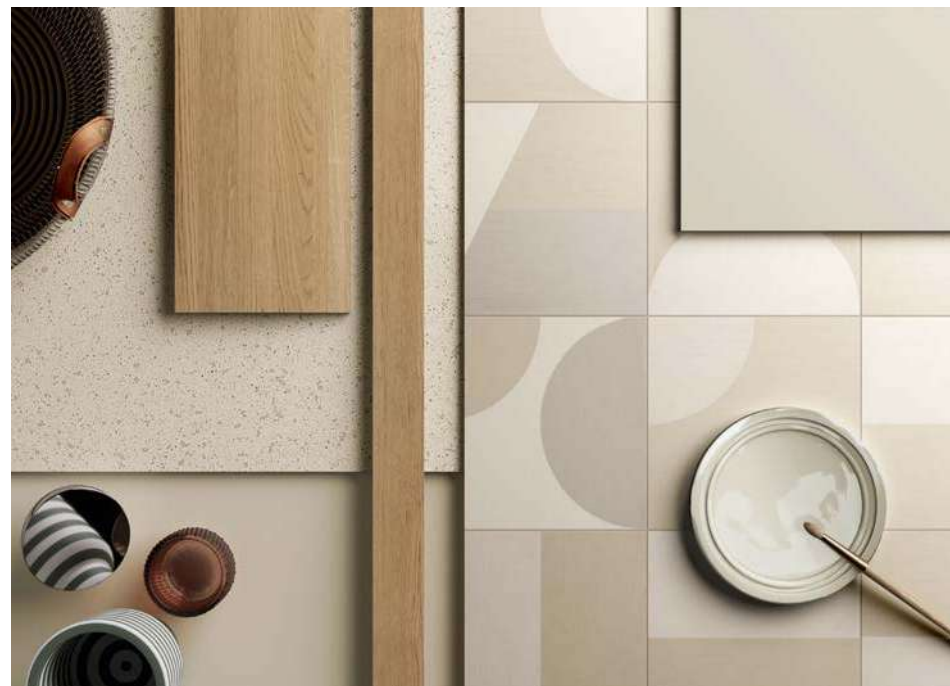
Floor Déchirer (La Suite) Cenere Trace 120x120. Wall Puzzle Edge Slate, Accents Paints Limetouch Limestone, Accents Paints Matt Iron (ceiling).





Floor Mews Fog 5x45. Wall Accents Wood Skirting L Light Oak, Déchirer XI Gesso, Accents Wood Skirting S Light Oak, Accents Paints Matt Moss (from below).





Floor Puzzle Faroe. **Wall** Accents Wood Skirting L Light Oak, Puzzle Faroe, Puzzle Mineral, Cover Base White 120x120 (from below). Accents Wood Wall Panel 160 Light Oak (left wall). Accents Paints Satin Pearl. **Accessories** Accents Accessories Rack 192 Light Oak.





Floor Pico Up Blue 120x120. **Wall** Accents Metal L Profile Black, Pico Gris Blue Dots 120x120, Accents Paints Satin Mist (from below). Diarama Sky Dark (washbasins wall).
Accessories Accents Accessories Rack 72 Dark Oak.





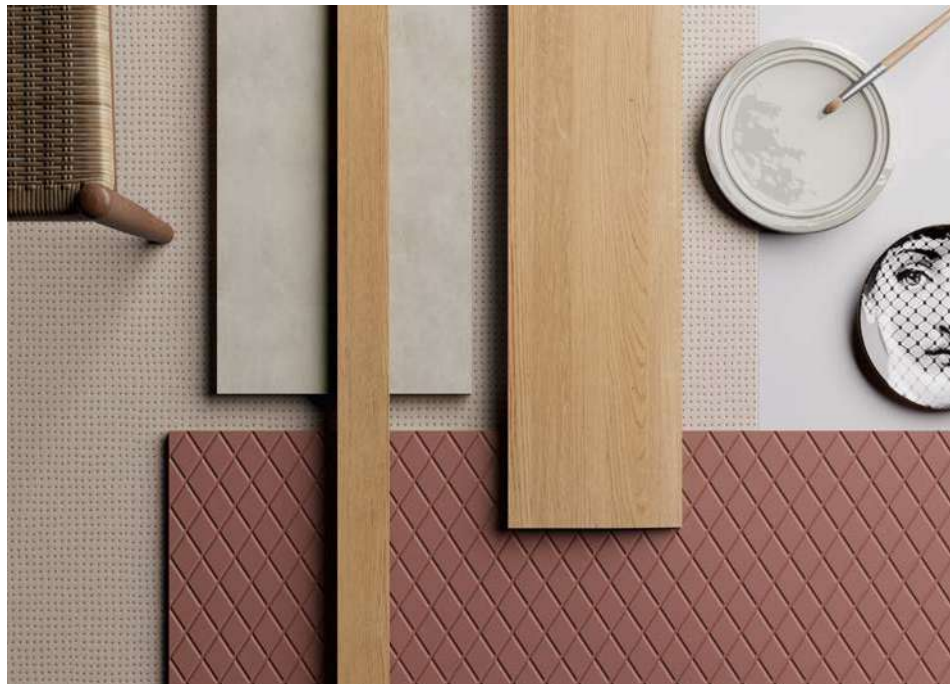
Floor Piano Blanc Bleu Vert. Wall Accents Paints Matt Pearl.





Floor Cover Base Black 120x120. **Wall** Lane Poly Aubergine (back wall), Lane Poly Grey (right wall), Mistral Black (central wall + central display). **Ceiling** Accents Paints Matt Arctic.





Floor Pico Red Dots Blanc 120x120. **Wall** Accents Wood Skirting L Light Oak, Pico Red Dots Blanc 120x120. Accents Wood Rectangular Skirting Light Oak, Accents Paints Satin Chalk. (from below). Rombini Losange Red (kitchen wall). **Accessories** Accents Accessories Shelf Large Light Oak.





Floor Tex Black, Tex Runner 7. **Wall** Accents Wood Skirting L Dark Oak, Accents Wood Wall Panel 160 Dark Oak, Accents Wood Skirting S Dark Oak, Accents Paints Matt Yarn (from below).



Inspirations



N.1



N.2



N.3



N.4



N.5



N.6



N.7



N.8



N.9



N.10



N.11



N.12



N.13



N.14



N.15



N.16



N.17



N.18



N.19



N.20



N.21



N.22



N.23

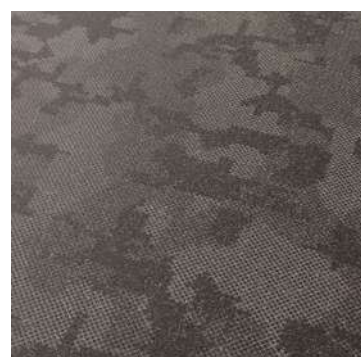


N.24

Overview

Technical Features

Tiles



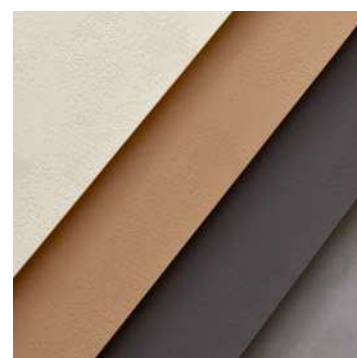
AZULEJ
Patricia Urquiola

BAS RELIEF
Patricia Urquiola

CERAMICA
Silvia Giacobazzi

CHYMIA
Laboratorio Avallone

COVER
Patricia Urquiola



DÉCHIRER
Patricia Urquiola

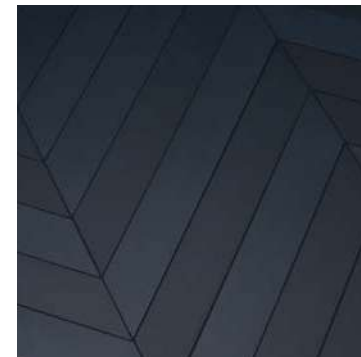
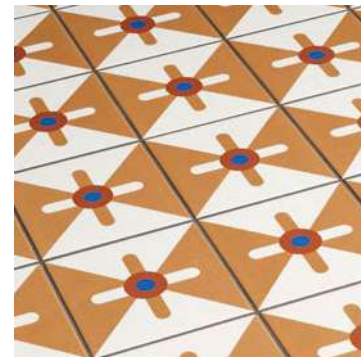
DÉCHIRER (LA SUITE)
Patricia Urquiola

DÉCHIRER XL
Patricia Urquiola

DIARAMA
Hella Jongerius

FLOW
Mutina Team

Tiles



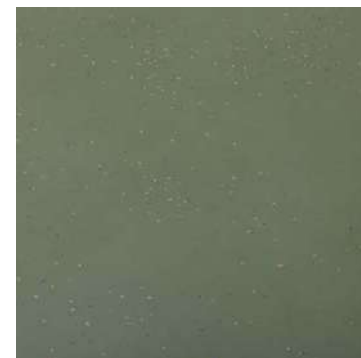
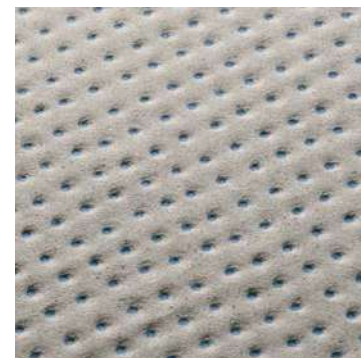
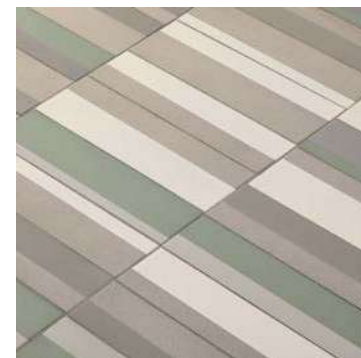
FOLDED
Raw Edges

FOLDED XL
Raw Edges

LANE
Barber & Osgerby

MATTONELLE MARGHERITA
Nathalie Du Pasquier

MEWS
Barber & Osgerby



NUMI
Konstantin Grcic

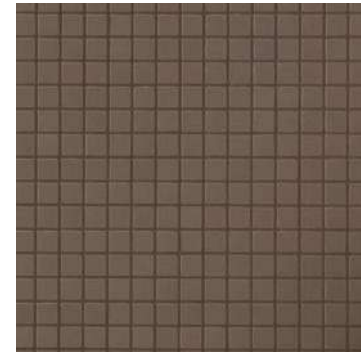
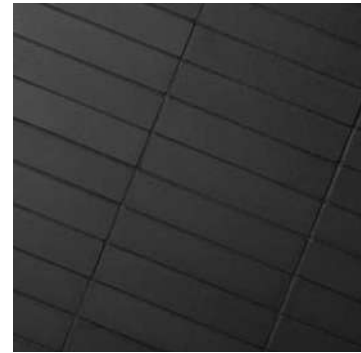
PHENOMENON
Tokujin Yoshioka

PIANO
Ronan & Erwan Bouroullec

PICO
Ronan & Erwan Bouroullec

PRIMAVERA
Barber & Osgerby

Tiles



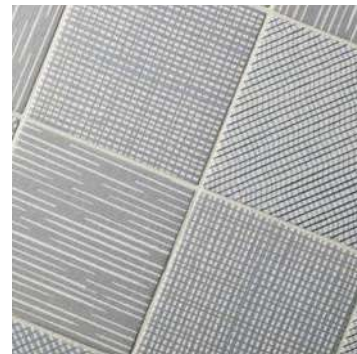
PUZZLE
Barber & Osgerby

ROMBINI
Ronan & Erwan Bouroullec

TAPE
Raw Edges

TEKNOMOSAICO
Mutina Team

TEKNOTESSERE
Mutina Team

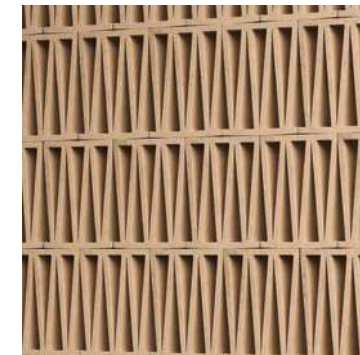
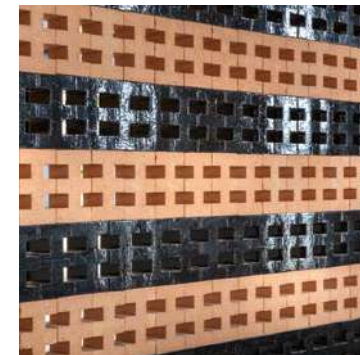


TEX
Raw Edges

TIERRAS
Patricia Urquiola

TRATTI
Inga Sempé

3D Elements



BRAC
Nathalie Du Pasquier

CELOSIA
Patricia Urquiola

MISTRAL
Barber & Osgerby

Metal

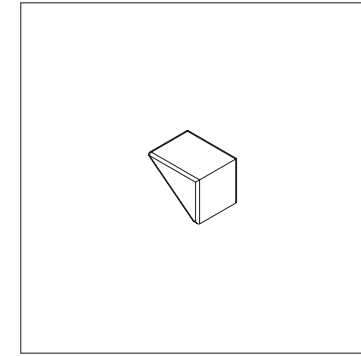
Accents Metal by OEO Studio



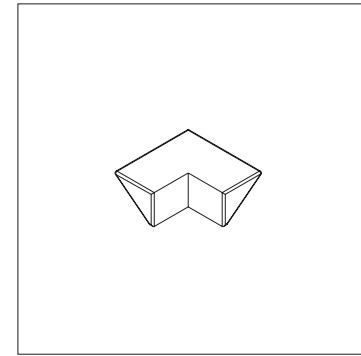
L PROFILE HORIZONTAL
Aluminium profile powder coating
2,5 x 2,5 x 100 (L) cm



L PROFILE CORNER
Aluminium profile powder coating
2,5 x 2,5 x 100 (L) cm



L CAP HORIZONTAL
Shaped wedge in resin for corner
protection – Resin Black / Grey
2 x 2,5 x 1,9 (H) cm

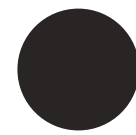


L CAP CORNER
Sharp-edged wedge in resin for corner
protection – Resin Black / Grey
4,8 x 2,5 x 1,9 (H) cm

Finishing



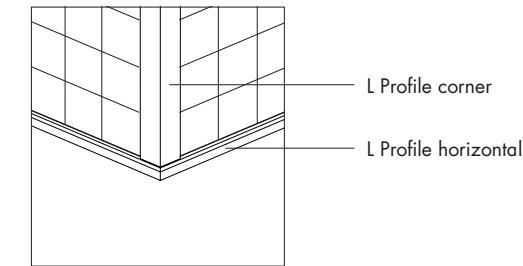
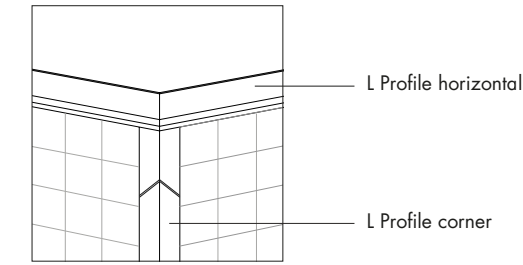
Grey (RAL 7047)



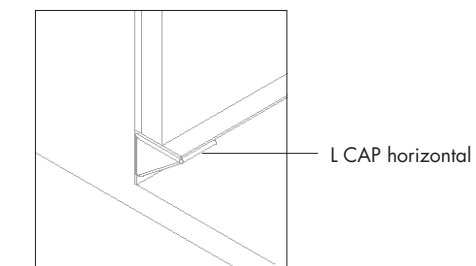
Black (RAL 9004)

How to use Metal Elements

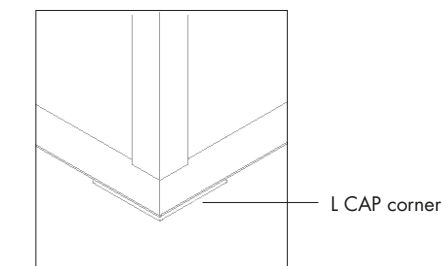
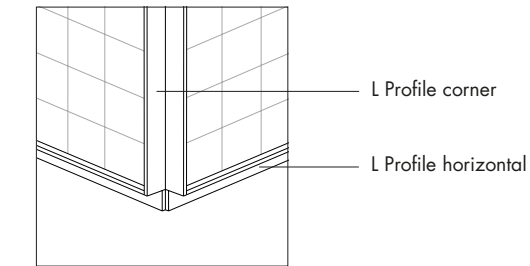
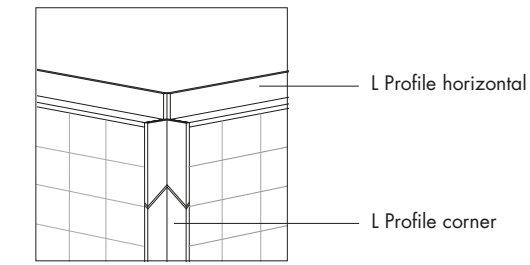
EXTERNAL CORNER Option A



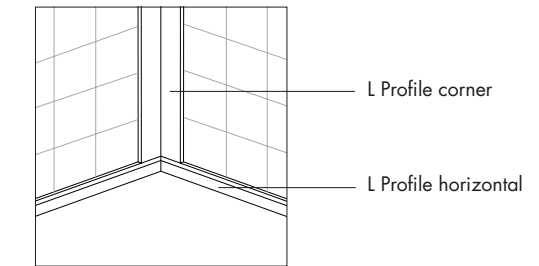
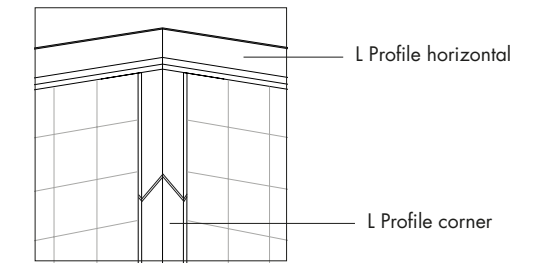
RESIN WEDGES for corner protection



Option B



INTERNAL CORNER



Wood

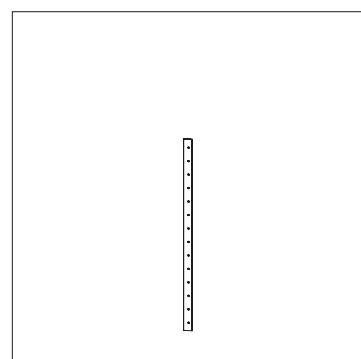
Accents Wood by OEO Studio



WALL PANEL 100
Light oak – 2 x 19,8 x 100 (H) cm



WALL PANEL 160
Light oak – 2 x 19,8 x 160 (H) cm



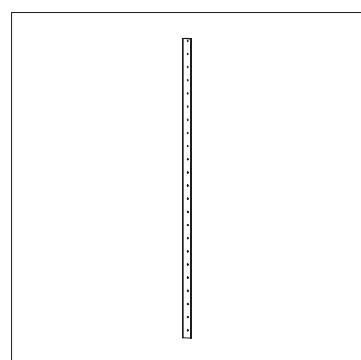
MOUNTING PIECE 100
Raw wood – 0,9 x 3,7 x 100 (H) cm



WALL PANEL 100
Dark oak – 2 x 19,8 x 100 (H) cm



WALL PANEL 160
Dark oak – 2 x 19,8 x 160 (H) cm

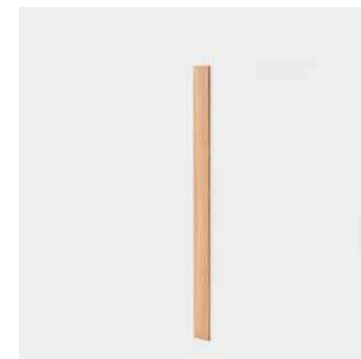


MOUNTING PIECE 160
Raw wood – 0,9 x 3,7 x 160 (H) cm

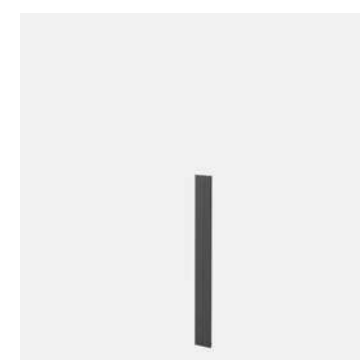
Wood



WALL PANEL CORNER 100
Light oak – 1,5 x 10 x 100 (H) cm



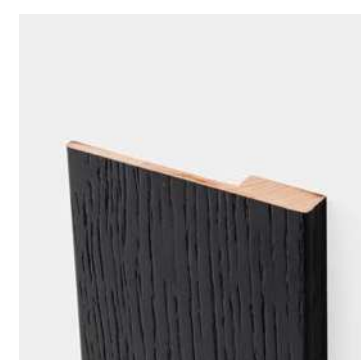
WALL PANEL CORNER 160
Light oak – 1,5 x 10 x 160 (H) cm



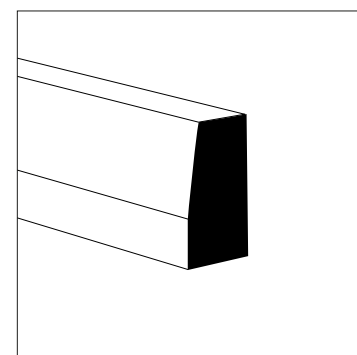
WALL PANEL CORNER 100
Dark oak – 1,5 x 10 x 100 (H) cm



WALL PANEL CORNER 160
Dark oak – 1,5 x 10 x 160 (H) cm



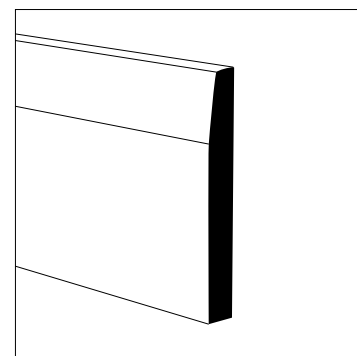
Wood



SKIRTING S
Light oak – 3 x 6 (H) x 240 (L) cm

SKIRTING S
Dark oak – 3 x 6 (H) x 240 (L) cm

END PIECE S
Black painted metal
3 x 6 (H) x 0,2 (L) cm

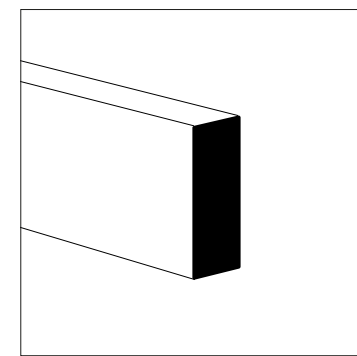
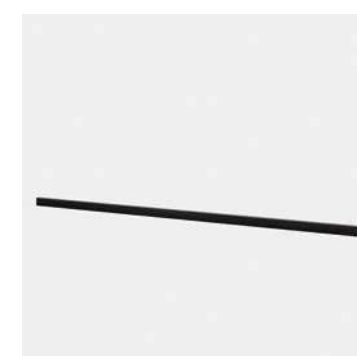


SKIRTING L
Light oak – 2,5 x 19,8 (H) x 240 (L) cm

SKIRTING L
Dark oak – 2,5 x 19,8 (H) x 240 (L) cm

END PIECE L
Black painted metal
2,5 x 19,8 (H) x 0,2 (L) cm

Wood

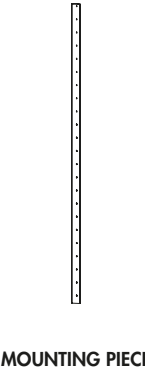


RECTANGULAR SKIRTING
Light oak – 2,5 x 6 (H) x 240 (L) cm

RECTANGULAR SKIRTING
Dark oak – 2,5 x 6 (H) x 240 (L) cm

END PIECE RECTANGULAR
Black painted metal
2,5 x 6 (H) x 0,2 (L) cm

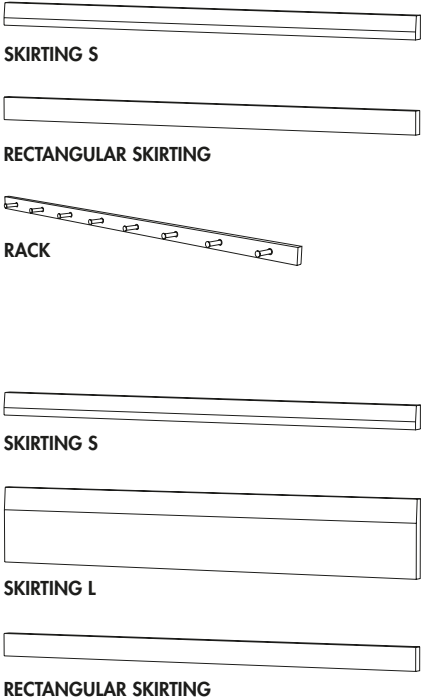
How to use Wall Panel



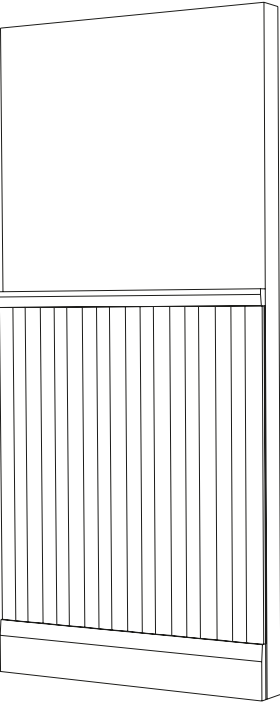
+



+



=



Wall Panel e Wall Panel Corner sono venduti solo in abbinamento a Mounting Piece e Skirting S, Skirting L, Rectangular Skirting o Rack

Wall Panel and Wall Panel Corner are only sold in combination with Mounting Piece and Skirting S, Skirting L, Rectangular Skirting or Rack

Accessories

Accents Accessories by OEO Studio



RACK 72
Light oak – 2,5 x 6 (H) x 72 (L) cm



RACK 192
Light oak – 2,5 x 6 (H) x 192 (L) cm



RACK 72
Dark oak – 2,5 x 6 (H) x 72 (L) cm



RACK 192
Dark oak – 2,5 x 6 (H) x 192 (L) cm



Accessories



CABINET LARGE
Light oak + Vegetable tanned leather
14,7 x 48 x 40,5 (H) cm



CABINET SMALL
Light oak + Vegetable tanned leather
14,7 x 48 x 17,5 (H) cm



CABINET LARGE
Dark oak + Vegetable tanned leather
14,7 x 48 x 40,5 (H) cm



CABINET SMALL
Dark oak + Vegetable tanned leather
14,7 x 48 x 17,5 (H) cm



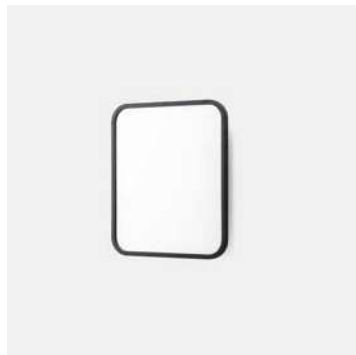
Accessories



MIRROR SMALL
Light oak – 2 x 42 x 50 (H) cm



MIRROR LARGE
Light oak – 2 x 62 x 142 (H) cm



MIRROR SMALL
Dark oak – 2 x 42 x 50 (H) cm



MIRROR LARGE
Dark oak – 2 x 62 x 142 (H) cm



Accessories



SHELF SMALL
Light oak – 2,5 x 23 x 60 (L) cm



SHELF LARGE
Light oak – 2,5 x 23 x 120 (L) cm



SHELF SMALL
Dark oak – 2,5 x 23 x 60 (L) cm



SHELF LARGE
Dark oak – 2,5 x 23 x 120 (L) cm



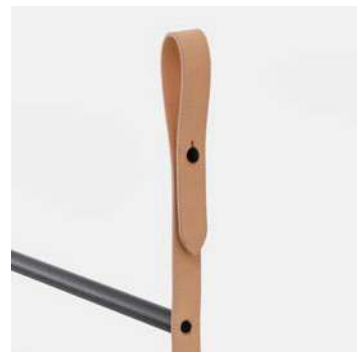
Accessories



TOWEL RACK TALL
Black metal + Vegetable tanned leather
53,4 (H) cm x 47 (L) cm



TOWEL RACK LARGE
Black metal + Vegetable tanned leather
40,5 (H) cm x 95 (L) cm



Accessories

The Cylinder Glass by Laboratorio Avallone

Limited edition of only 50 pieces each



ALTO NERO
black cylinder + white circle
14 x 31,2 (H) cm



ALTO BIANCO
white cylinder + black circle
14 x 31,2 (H) cm



MEDIO NERO
black cylinder + white circle
19,5 x 20,5 (H) cm



MEDIO BIANCO
white cylinder + black circle
19,5 x 20,5 (H) cm



BASSO NERO
black cylinder + white circle
25,5 x 14 (H) cm



BASSO BIANCO
white cylinder + black circle
25,5 x 14 (H) cm

Paints

Accents Paints

by OEO Studio

Matt / Satin 20 Colors

Matt: super matt water-based paint

Satin: wall matt super washable emulsion



CHALK



YARN



SAND



IVORY



PEARL



PEBBLES



LIMESTONE



MOSS



SLATE



GRAPHITE

Paints



IRON



COAL



MIST



PINE



ARCTIC



OLIVE



OXIDE



EARTH



TERRA



CLAY

Paints

Accents Paints
by OEO Studio

Limetouch 6 Colors
Colored lime-based decorative coating



FLOUR



CHALK



LIMESTONE



MOUNTAIN



MOSS



COKE



LIMEBASE + LIMECOAT

Limebase: pigmented primer for Limetouch
Limecoat: water repellent protective coating for Limetouch

Paints

Margherita Paints
by Nathalie Du Pasquier

Matt / Satin 5 Colors
Matt: super matt water-based paint
Satin: wall matt super washable emulsion



ARANCIONE



AZZURRO



GIALLO



ROSA



VERDE

Designers

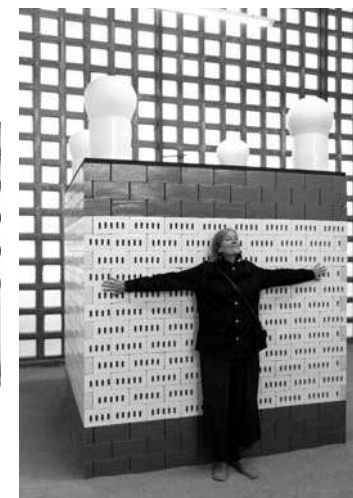
You can only work with people you like.



Edward Barber & Jay Osgerby



Ronan & Erwan Bouroullec



Nathalie Du Pasquier



Konstantin Grcic



Edward Barber e Jay Osgerby

Edward Barber e Jay Osgerby, fondatori del celebre studio londinese che da loro prende il nome, sono entrati a far parte del team Mutina nel 2013 con la collezione Mews. Hanno poi rinnovato la collaborazione con Puzzle e Mistral, e lanciato Lane e Primavera nel 2018. Barber e Osgerby inaugurano il loro studio londinese nel 1996, dopo essersi laureati al Royal College of Art di Londra. Il loro approccio multidisciplinare sfida i confini del design industriale, dell'architettura e dell'arte. I loro lavori includono collezioni per Knoll, Vitra, B&B Italia, Cappellini, Venini e Flos, limited edition e commissioni pubbliche come la London 2012 Olympic Torch e la moneta da 2 sterline disegnata per la Royal Mint. La prima monografia estensiva loro dedicata, pubblicata da Rizzoli New York, è del 2011. Entrambi sono Royal Designers for Industry (RDI) e Honorary Doctors of

Art. Il loro lavoro è nelle collezioni permanenti di musei in tutto il mondo, come il V&A e il Design Museum di Londra, il Metropolitan Museum of Art di New York o l'Art Institute di Chicago.

Edward Barber and Jay Osgerby, founders of the London-based studio that takes their names, joined the Mutina team in 2013 with the Mews collection. They renovated the collaboration with Puzzle and Mistral, and launched Lane and Primavera in 2018. Barber and Osgerby opened their London-based studio in 1996, after graduating from the Royal College of Art. Their multidisciplinary approach pushes the boundaries of industrial design, architecture and art. Their works include collections for Knoll, Vitra, B & B Italia, Cappellini, Venini and Flos, limited edition pieces and commissions such as the London 2012 Olympic Torch and the £2 coin designed for the Royal Mint. The first extensive monograph on the pair was published by Rizzoli New York in

2011. They are both Royal Designers for Industry (RDI) and Honorary Doctors of Art. Their work is included in the permanent collections of museums all around the world, such as V&A and Design Museum in London, the Metropolitan Museum of Art in New York and Chicago's Art Institute.

Ronan & Erwan Bouroullec

Ronan & Erwan Bouroullec, designer originari della Bretagna, sono entrati a far parte del team Mutina nel 2011. Hanno firmato le collezioni Pico, Rombini e Piano. La collaborazione tra Ronan e Erwan Bouroullec si sviluppa come un dialogo permanente alimentato dalle loro personalità molto diverse. Lavorano con numerose aziende, tra cui Vitra, Kvadrat, Magis, Kartell, Established & Sons, Ligne Roset, Axor, Hay, Nanimarquina, Issey Miyake e Cappellini, e intraprendono spesso occasionali progetti d'architettura. Allo stesso tempo, portano

avanti un'attività di sperimentazione presso la Galerie Kreo di Parigi. Molti i premi al loro attivo: designer dell'anno al Salone del Mobile di Parigi del 2002, il Finn-Juhl Prize a Copenhagen nel 2008, ben due "Best of the Best" Red Dot Design Award e la Panerai London design Medal nel 2014. Numerose mostre sono state dedicate al loro lavoro e le loro creazioni sono parte delle collezioni permanenti di diversi musei internazionali.

Ronan and Erwan Bouroullec, designers hailing from Brittany, joined the Mutina team in 2011. They designed the Pico, Rombini and Piano collections. The collaboration between Ronan and Erwan Bouroullec develops as a permanent dialogue nourished by their distinct personalities. They design for many manufacturers, including Vitra, Kvadrat, Magis, Kartell, Established & Sons, Ligne Roset, Axor, Hay, Nanimarquina, Issey Miyake and

Cappellini, and often embark on occasional architectural projects. They simultaneously continue their experimental activity at Galerie Kreo in Paris. Their work has been recognised with many awards, including designers of the year at the Paris Salon du Meuble in 2002, the Finn-Juhl Prize in Copenhagen in 2008, two "Best of the Best" Red Dot Design Award and the Panerai London Design Medal in 2014. Several exhibitions have showcased their works and their creations are part of the permanent collections of several international museums.

Nathalie Du Pasquier

Artista e designer di origini francesi, Nathalie Du Pasquier si è unita al team Mutina nel 2019 con la realizzazione di BRIC, l'installazione site-specific esposta in occasione di MUT 4. Ha progettato la serie di elementi 3D Brac e la collezione Mattonelle Margherita. Nathalie Du

Pasquier è nata a Bordeaux nel 1957 e vive a Milano dal 1979. Negli anni ottanta ha lavorato come designer, progettando soprattutto tessuti e superfici, ed è stata tra i fondatori del gruppo Memphis. Dal 1987, si dedica prevalentemente alla pittura, un ambito in cui la sua pratica ha preso direzioni inaspettate ed è stata oggetto di una costante evoluzione. Il suo lavoro è stato esposto in mostre personali presso: Kunsthalle Wien, International Center of Graphic Arts di Ljubljana, Galerie Fuer Zeitgenoessische Kunst di Lipsia, Apalazzo Gallery di Brescia, Pace Gallery di Seoul e Anton Kern Gallery di New York.

French artist and designer Nathalie Du Pasquier joined the Mutina team in 2019 with the realisation of BRIC, site-specific installation exhibited on the occasion of MUT 4. She designed Brac, a series of three-dimensional elements, and Mattonelle Margherita collection. Nathalie Du Pasquier was born in Bordeaux

in 1957 and has lived in Milano since 1979. During the eighties, she has worked as a designer, creating textiles and mostly surfaces, and was a founding member of Memphis. In 1987 painting became her main activity and ever since her practice is constantly developing in new and unexpected directions. Her work has been featured in solo exhibitions at Kunsthalle Wien, International Center of Graphic Arts in Ljubljana, Galerie Fuer Zeitgenoessische Kunst in Leipzig, Apalazzo Gallery in Brescia, Pace Gallery in Seoul and at Anton Kern Gallery in New York.

Konstantin Grcic

Artista e designer di origini tedesche, Konstantin Grcic è entrato a far parte del team Mutina nel 2015, con la collezione Numi. Dopo gli studi Design al Royal College of Art di Londra, Konstantin Grcic ha aperto il proprio studio di design a Monaco di Baviera nel 1991, dove ha

sviluppato mobili, prodotti e illuminazione per alcune delle più importanti aziende di design al mondo (Authentic, BD Ediciones, ClassiCon, Flos, Flötto, Magis, Maharam, Muji, Nespresso, Plank, Serafino Zani e Vitra). Molti dei suoi prodotti hanno ricevuto premi internazionali, come il prestigioso Compasso d'Oro per la sua lampada Mayday (Flos) nel 2001 e la sedia Myto (Plank) nel 2011, oltre a far parte delle collezioni permanenti dei più importanti musei di design (MoMA – New York, Centre Georges Pompidou – Parigi). La Royal Society for the Arts ha nominato Konstantin Grcic Royal Designer for Industry nel 2009, mentre Design of the Year per il 2010. Una monografia completa del suo lavoro è stata pubblicata da Phaidon Press, Londra (2005).

German artist and designer, Konstantin Grcic joined the Mutina team in 2015, with the Numi collection. After studying designed at the Royal



Hella Jongerius



Gennaro Avallone



Laboratorio Avallone

La collaborazione tra Laboratorio Avallone e il team Mutina è iniziata nel 2019, con lo sviluppo della collezione Chymia e The Cylinder Glass, il primo progetto in edizione limitata dell'azienda con un focus sul vetro di Murano. La ricerca di Laboratorio Avallone si sviluppa sul terreno multidisciplinare delle arti applicate, dove coniuga i linguaggi di pittura e scultura per dare vita a oggetti e complementi d'arredo unici e speciali. Epicentro creativo del team è Gennaro Avallone, maestro e sperimentatore, che da più di venticinque anni esplora i confini e le possibilità delle superfici.

of color. Furthermore, many of her products can be found in the permanent collections of important museums, such as MoMA (New York), the Victoria and Albert Museum (London) and Boijmans van Beuningen Museum (Rotterdam).

nelle collezioni permanenti di alcuni famosi musei, come il MoMA (New York), il Victoria and Albert Museum (Londra) e il Boijmans van Beuningen Museum (Rotterdam).

Designer and tireless researcher Hella Jongerius joined the Mutina team in 2018. She designed the Diarama collection. Born in the Netherlands but based in Berlin, Hella Jongerius is well known for her never-ending colour and material research where she combines the traditional with the contemporary in order to create products with individual character by including craft elements in the industrial production process. She founded Jongeriuslab in 1993, where both independent projects and works for major clients are developed. The designer also acts as Art Director for Vitra and Design Director for Danskina, Kvadrat and Maharam's rug atelier. In 2017, Jongerius received the Sikkens Prize, thanks to her special contribution to the field

Hella Jongerius

Hella Jongerius, designer e ricercatrice instancabile, si è unita al team Mutina nel 2018. Ha progettato la collezione Diarama. Nata in Olanda ma con base a Berlino, Hella Jongerius è conosciuta per la sua ricerca su colori e materiali in continua evoluzione, dove tradizione e contemporaneità si fondono con l'obiettivo di creare prodotti dalla forte individualità, coinvolgendo elementi artigianali all'interno del processo industriale. Nel 1993 ha fondato Jongeriuslab, dove porta avanti progetti indipendenti e collaborazioni con importanti aziende del settore. La designer lavora anche come Art Director per Vitra, e come Design Director per Danskina, Kvadrat e l'atelier di tappeti Maharam ad Amsterdam. Nel 2017 ha ricevuto il Sikkens Prize, grazie al suo speciale contributo nel campo dei colori. Molte delle sue creazioni, inoltre, si trovano

College of Art in London, Konstantin Grcic opened his own studio in Munich in 1991, where he developed furniture, products and lighting for some of the world's leading design companies (Authentics, BD Ediciones, ClassiCon, Flos, Flötotto, Magis, Maharam, Muji, Nespresso, Plank, Serafino Zani and Vitra). Many of his products received international design awards, such as the prestigious Compasso d'Oro for his Mayday lamp (Flos) in 2001 and the Myto chair (Plank) in 2011, furthermore they are part of the permanent collections of the most important design museums (MoMA – New York, Centre Georges Pompidou – Paris). The Royal Society for the Arts appointed Konstantin Grcic Royal Designer for Industry in 2009, while Design Miami awarded him Designer of the Year in 2010. A comprehensive monograph of his work was published by Phaidon Press, London (2005).



OEO Studio



Raw Edges



ability to intuit the client's needs, become fundamental to realise interior architecture, product design and brand innovation projects.

Raw Edges

Raw Edges, design studio fondato da Yael Mer e Shay Alkalay, è entrato a far parte del team Mutina nel 2010. Hanno disegnato le collezioni Folded, Tex, Folded XL e Tape. Nati a Tel Aviv, Yael Mer e Shay Alkalay si sono spostati da Gerusalemme a Londra, dove hanno fondato il Raw Edges Design Studio. Yael ama piegare come fogli sottili strati dei materiali più vari, generando volumi curvi e funzionali. Shay ha un profondo interesse per il modo in cui le cose si muovono, funzionano e interagiscono. I due diversi approcci convergono nella creazione di progetti inediti, frutto di una spiccata sensibilità ambientale. Nel 2009 hanno ricevuto l'Elle Decoration International

Design Award per Stack di Established & Sons e sono stati insigniti del Designers of the Future Award al Design Miami/Basel. Collaborano con diversi brand internazionali come Cappellini, Established & Sons, Moroso, Kvadrat, Stella McCartney, Arco, Golran, Moustache e Lema. I loro lavori sono presenti nelle collezioni permanenti di musei a livello internazionale.

The Raw Edges design studio, founded by Yael Mer and Shay Alkalay, joined the Mutina team in 2010. They designed the Folded, Tex, Folded XL and Tape collections. Both born in Tel Aviv, Yael Mer and Shay Alkalay moved from Jerusalem to London, where they founded the Raw Edges Design Studio. Yael likes to fold slim layers of all sorts of material as if they were paper, creating curved volumes and functional forms, while Shay has a passionate interest in the way things move, function and interact. These two different approaches



Inga Sempé



Patricia Urquiola



Tokujin Yoshioka



combine in the creation of original projects, characterised by a keen sensitivity towards the environment. In 2009, they received the Elle Decoration International Design Award for Stack by Established & Sons and the Designers of the Future Award at Design Miami/Basel. They work with many international brands such as Cappellini, Established & Sons, Moroso, Kvadrat, Stella McCartney, Arco, Golran, Moustache and Lema. Their creations are part of the permanent collections at international museums.

Inga Sempé

L'artista-designer Inga Sempé è entrata a far parte del team Mutina nel 2014. Ha realizzato la collezione Tratti. Inga Sempé è nata a Parigi da una famiglia di artisti. L'importanza del disegno nel contesto familiare, anche se svincolato dal design, ha sicuramente contribuito a distinguere il suo approccio

progettuale da quello dei suoi conterranei. Diplomata nel 1993 all'ENSCI Atelier (Ecole Nationale Supérieure de Création Industrielle – Parigi), ha lavorato in diversi studi di design e di architettura d'interni per poi aprire il suo studio a Parigi nel 2000. Dal 2000 al 2001 presso Villa Medici (Academie de France) a Roma ha sviluppato i suoi primi progetti personali poi prodotti da Edra e Cappellini. Nel 2003 ha ottenuto il Grand Prize of Creation di Parigi per il design ed ha esposto i suoi progetti in una mostra personale presso Il Musée des Arts Décoratifs. La designer collabora con il brand francese Ligne Roset e con aziende internazionali come LucePlan, Wästberg, Moustache, Alessi, Almedahls, Hay, Svenkst Tenn e Cassina.

Artist and designer Inga Sempé joined the Mutina team in 2014. She designed the Tratti collection. Inga Sempé was born in Paris to a family of artists. Although never linked to design, the

importance of drawing in her family environment was certainly a factor in the way her personal approach now differs from other French designers. After graduating from the ENSCI Atelier (Ecole Nationale Supérieure de Création Industrielle – Paris) in 1993, she worked in various design and interior architecture studios, and opened her own Paris-based studio in 2000. From 2000 to 2001, Sempé designed her first personal projects produced by Edra and Cappellini at the Villa Medici (Academie de France) in Rome. In 2003, she received the Paris Grand Prize of Creation for design and had a solo show at the Musée des Arts Décoratifs. The designer collaborates with French brand Ligne Roset and international companies such as LucePlan, Wästberg, Moustache, Alessi, Almedahls, Hay, Svenkst Tenn and Cassina.

Patricia Urquiola

Architetto e designer spagnola, ma italiana di adozione, fa parte del team Mutina dal 2008. Ha disegnato numerose collezioni, tra cui: la serie Déchirer, Bas-Relief, Azulej, Déchirer (La Suite), Tierras, Déchirer XL, Cover e Celosia. Patricia Urquiola è nata a Oviedo, in Spagna, ma vive e lavora a Milano da più di vent'anni. Dopo essersi laureata nel 1989, ha lavorato per Achille Castiglioni. Durante i primi anni della sua carriera, è stata assistant lecturer per Achille Castiglioni, collaborato con Vico Magistretti ed è stata responsabile Design per Lissoni Associati. Nel 2001, ha aperto il suo studio lavorando nei settori del product design, interni e architettura. Ha realizzato progetti retail e allestimenti per Gianvito Rossi, BMW, Flos, Missoni, Moroso, Officine Panerai, H&M, Santoni, Pitti Uomo Firenze e ha vinto diversi premi internazionali tra cui: la "Medalla de Oro al

Mérito en las Bellas Artes" del Governo Spagnolo, l'Ordine di Isabella la Cattolica, consegnato da Sua Maestà il Re di Spagna Juan Carlos I, "Designer del decennio" e "Designer dell'anno".

Patricia Urquiola, Spanish architect and designer, adopted Italian, joined the Mutina team in 2008. She designed numerous collections, including Déchirer, Bas-Relief, Azulej, Déchirer (La Suite), Tierras, Déchirer XL, Cover and Celosia. Patricia Urquiola was born in Oviedo, Spain, but has lived and worked in Milan for over twenty years. After graduating in 1989, she worked for Achille Castiglioni. In the early years of her career, she was assistant lecturer to Achille Castiglioni, she collaborated with Vico Magistretti and was Head of Design at Lissoni Associati. She opened her own studio in 2001, working in product design, interior design and architecture. She worked on retail and fitting projects for Gianvito Rossi, BMW, Flos, Missoni, Moroso, Officine Panerai,

H&M, Santoni, Pitti Uomo Firenze and won several international prizes, including: Medalla de Oro al Mérito en las Bellas Artes and the Order of Isabella the Catholic, awarded to her by King Juan Carlos I of Spain, "Designer of the Decade" and "Designer of the Year".

Tokujin Yoshioka

Tokujin Yoshioka, artista e designer giapponese, è entrato a far parte del team Mutina nel 2010. Ha disegnato la serie Phenomenon. Tokujin Yoshioka nasce in Giappone, dove si forma con Shiro Kuramata e Issey Miyake, per poi aprire il proprio studio nel 2000. Ha collaborato con aziende giapponesi e internazionali come Hermès, Toyota, BMW, Swarovski, Driade, Moroso e Kartell, tra gli altri. La cifra caratteristica del suo approccio creativo è costituita dalla poesia e dalla leggerezza onirica delle sue opere, che nascono da un'attenta e sofisticata ricerca su

materiali semplici abbinata alla sperimentazione tecnologica. Alcuni dei suoi pezzi sono esposti al MoMA, al Cooper Hewitt di New York, al Victoria & Albert di Londra e al Vitra Design Museum. Ha vinto diversi premi, tra cui: Design Miami, Designer of the Year 2007, Wallpaper Design Awards 2008 e Elle Decoration International Design Award, Designer of the Year 2009. Grazie alla collezione Phenomenon, disegnata per Mutina, nel 2011 ha ricevuto il Wallpaper Design Award e l'Elle Decoration Design Award.

Japanese artist and designer Tokujin Yoshioka joined the Mutina team in 2010. He designed the Phenomenon collection. Tokujin Yoshioka was born in Japan, where he trained with Shiro Kuramata and Issey Miyake, and opened his studio in 2000. He collaborated with Japanese and international brands, such as Hermès, Toyota, BMW, Swarovski, Driade, Moroso and Kartell, among others. The signature feature of

his creative approach is the poetic and light, dreamlike quality of his work, which stems from attentive and sophisticated selection of simple materials combined with technological experimentation. Some of his works are exhibited at MoMA and Cooper Hewitt (New York), Victoria & Albert (London) and at the Vitra Design Museum. His awards include Design Miami, Designer of the Year 2007, Wallpaper Design Awards 2008 and Elle Decoration International Design Award, Designer of the Year 2009. In 2011 he received the Wallpaper Design Award and the Elle Decoration Design Award for his Phenomenon collection designed for Mutina.

To discover more about
Mutina Interiors visit mutina.it

MU
TIN
A

Art direction: Alla Carta Studio
Graphic design: Matteo Pastorio, Sara Barberis
Text: Mutina
Interiors images: Officine Mimesi
Photography: Cristiano Casolari (p.11,77,78,80-95),
Depasquale+Maffini (p.84),
Gerhardt Kellermann (p.9,13,15,17,19,74-76)
Printed and bound in Italy. February 2021.

All the rights are reserved.
Not any part of this work can be reproduced
in any way without the preventive written
authorization by Mutina. All work is
copyrighted © to their respective owners.

Ceramiche Mutina Spa
Via Ghiarola Nuova 16
41042 Fiorano MO, Italia
T +39 0536812800
F +39 0536812808
info@mutina.it
www.mutina.it

© Mutina 2021

