

TIME
BARBER & OSGERBY

Mutina

TIME
BARBER & OSGERBY

Mutina

“Il concetto di tempo è presente in molte delle nostre collezioni. Time approfondisce il modo in cui gli oggetti, nel tempo, si alterano e diventano ruvidi a causa dell’esposizione alle intemperie o interagendo con gli esseri umani, diventando più lisci nel corso degli anni”.

Barber & Osgerby

“The concept of time has actually been a recurring theme in several of our collections. Time delves into the manner in which objects, over time, either weather and acquire a rough texture due to exposure to the elements or interact with humans, becoming smoother through the years.”

Barber & Osgerby



Challenging the boundaries of design with Barber & Osgerby.

M Come descrivereste il vostro approccio personale, soprattutto in relazione a un materiale come la ceramica?

B&O Nel nostro lavoro sfidiamo costantemente i confini convenzionalmente imposti al design industriale, all'architettura e all'arte. La nostra attenzione si estende alle complessità del processo produttivo, sia che si tratti di una meticolosa lavorazione artigianale o di una produzione industriale di precisione, per portare a un'innovazione formale e concettuale. Crediamo fermamente che non ci siano ragioni intrinseche per cui specifici materiali, prodotti o strutture architettoniche non possano coesistere all'interno di ambienti moderni o tradizionali. Questa filosofia, che esalta la combinazione armoniosa di diversi elementi, è lo stesso approccio che applichiamo nel nostro lavoro con la ceramica.

M A cosa vi siete ispirati per la collezione Time?

B&O Il concetto di tempo è stato un tema centrale in molti dei progetti che abbiamo realizzato con Mutina. Time è un'esplorazione profonda dei graduali processi di alterazione osservati in natura. Nel corso del tempo, l'azione ripetuta dell'acqua e del vento consuma e lucida progressivamente le superfici, scolpendo paesaggi e trasformando elementi ruvidi in forme eleganti. Questa narrazione è stata un'ispirazione fondamentale per il progetto. Inoltre, per quanto riguarda la palette, abbiamo realizzato con cura otto colori che richiamano elementi di geologia, geografia, paesaggi e luoghi.

M Qual è la caratteristica più significativa della collezione?

B&O La texture è un aspetto fondamentale di Time, è stata la sfida che ha alimentato i nostri sforzi nello sviluppo del progetto. L'obiettivo era creare due piastrelle diverse, dal carattere ben distinto: la prima con una superficie incredibilmente liscia e opaca, e l'altra con una trama più materica. È stato scelto di creare questo contrasto per permettere agli elementi di catturare la luce in diversi modi, a seconda del loro posizionamento.

M How would you describe your personal approach, especially when it comes to a material such as ceramics?

B&O Within our practice, we consistently challenge the conventional boundaries that typically demarcate industrial design, architecture, and art. Our focus extends to the intricacies of the making process, whether it involves meticulous handcrafting or precision machine production, aiming to catalyse both formal and conceptual innovation. We firmly believe that there is no inherent reason why specific materials, products, or architectural structures cannot coexist in either contemporary or traditional settings. This philosophy, emphasising the harmonious integration of diverse elements, is the very approach we apply consistently in our work with ceramics.

M Where did you take inspiration for the Time collection?

B&O The concept of time has consistently emerged as a central theme in several of our projects with Mutina. The Time collection serves as an in-depth exploration of the gradual weathering processes observed in nature. Across time, the repetitive forces of water and wind incrementally wear away and polish surfaces, shaping landscapes and evolving rugged features into sleek forms. This narrative serves as the foundational inspiration for the project. Additionally, in terms of the colour palette, we meticulously crafted eight colourways, conceptualised as a series of evocations representing geology, geography, landscape, and place.

M What's the most significant feature of the collection?

B&O Texture serves as a foundational element in the Time project, posing a significant challenge that fuelled our development efforts. Our objective was to craft two distinct tile characters, one with an exceptionally smooth and matte surface, and the other featuring a rougher texture. This intentional contrast was designed to capture and reflect light in varied ways, depending upon the tile's placement. The result is an effect that mimics natural



Barber & Osgerby working on the concept of Time at Spazio Mutina.



Il risultato finale riproduce l'erosione naturale provocata dagli agenti atmosferici, restituendo l'impressione delle superfici modellate nel tempo.

M Come descrivereste la vostra relazione con Mutina?

B&O La collezione Time celebra il decimo anno della nostra collaborazione con Mutina, è l'emblema di un decennio durante il quale abbiamo saputo sfruttare i reciproci punti di forza. Durante questo periodo, abbiamo esteso sempre di più i confini delle regole di scala, texture e composizione applicate nel mondo della ceramica, un obiettivo che è al centro della ricerca di Mutina. Questa esplorazione viene portata avanti con uno spirito di sperimentazione, divertimento e autenticità, che riflette il nostro impegno reciproco a sfidare e ridefinire i paradigmi consolidati.

erosion by weather, a visual representation of surfaces shaped over time.

M How would you describe your relationship with Mutina?

B&O Celebrating the tenth anniversary of our collaboration with Mutina, the Time collection symbolises a decade of leveraging each other's strengths. Throughout this period, we consistently pushed the boundaries of accepted rules of scale, texture, and composition within the realm of ceramics — which is at the core of Mutina's research. This exploration is underpinned by a spirit of experimentation, playfulness, and authenticity, reflecting our mutual commitment to challenging and redefining established paradigms.



**THE
COLLECTION**

Time – tempo in inglese – è nata per celebrare dieci anni di collaborazione tra Mutina e Barber e Osgerby. Si tratta di un'esplorazione dei naturali processi di alterazione, dove l'azione ripetuta del vento e dell'acqua erode e affina progressivamente le superfici, scolpendo paesaggi e trasformando elementi ruvidi in forme lisce.

Time presenta tre moduli nelle dimensioni 20,5x20,5 cm, 3,9x20,5 cm e 3,9x3,9 cm, declinati in una palette di otto colori, ispirati a elementi di geologia, geografia, paesaggi e luoghi: Etna Black, Dakota Grey, Dover White, Salta Red, Highland Green, Virginia Blue, Sahara Sand e Atlas Brown. Ciascun colore è disponibile nelle finiture Rough e Smooth, pensate appositamente per essere combinate tra loro. Alternando le due texture nei diversi formati, è possibile creare infiniti layout: dai più semplici, che giocano principalmente con la materia, a quelli più creativi, che sfruttano l'alternanza di colori.

Time was conceived to commemorate a decade of collaboration between Mutina and Barber and Osgerby. It serves as an exploration of the natural weathering processes, where the recurrent actions of water and wind gradually erode and refine surfaces, shaping landscapes and evolving rugged features into sleek forms.

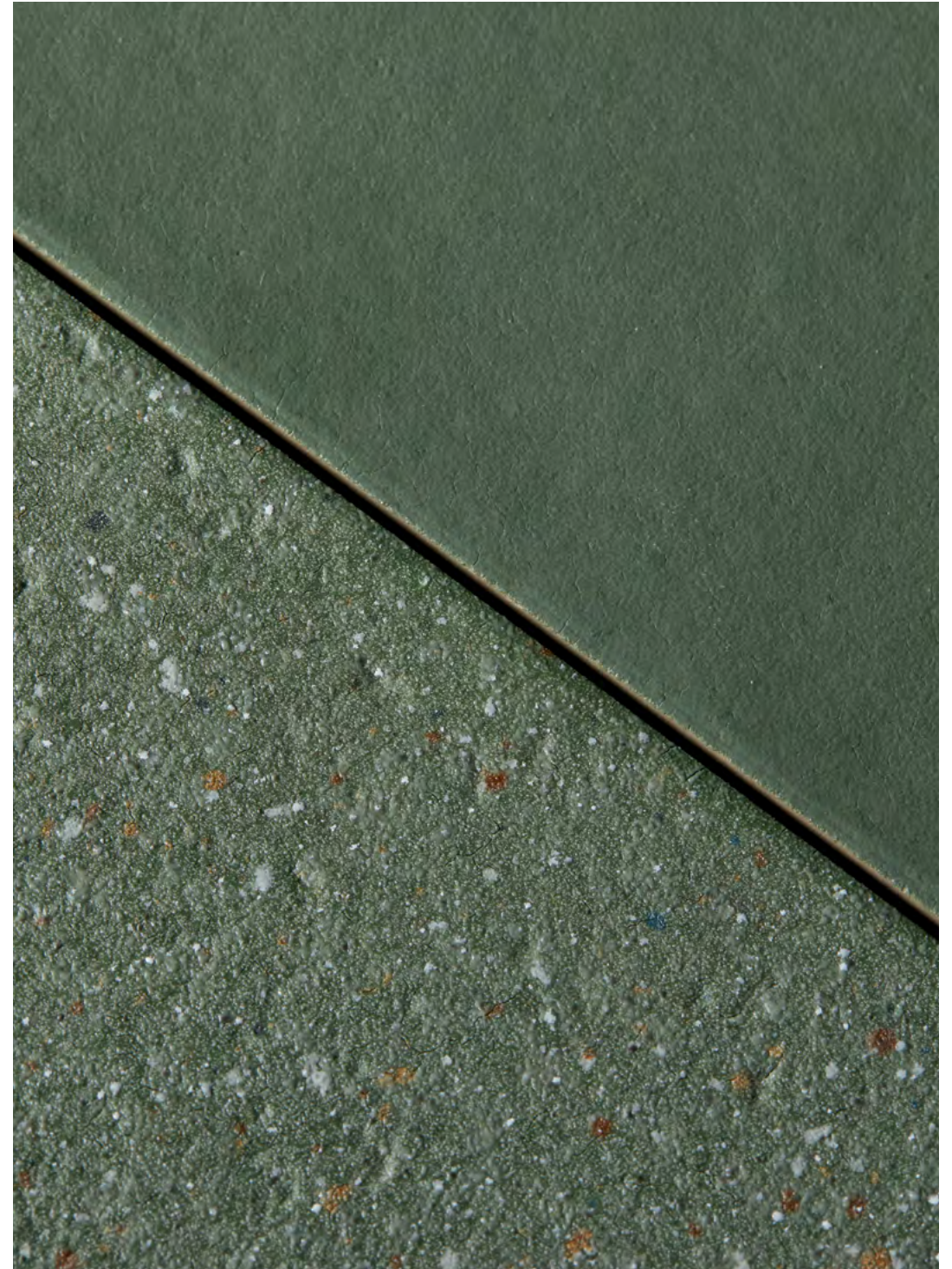
Time is offered in three sizes: 20,5x20,5 cm, 3,9x20,5 cm, and 3,9x3,9 cm. The collection features a palette of eight colours, drawing inspiration from elements of geology, geography, landscape, and place: Etna Black, Dakota Grey, Dover White, Salta Red, Highland Green, Virginia Blue, Sahara Sand, and Atlas Brown. These colours are available in both Rough and Smooth finishes, specifically conceived to be paired with each other. By alternating them in the several sizes, it is possible to create infinite layouts: from the simplest solutions, playing mostly with the material, to the most creative ones, alternating colours.

TEXTURES

Gli elementi di Time sono disponibili in due diverse finiture:
Rough e Smooth.

The elements of Time are available in two distinct finishes:
Rough and Smooth.

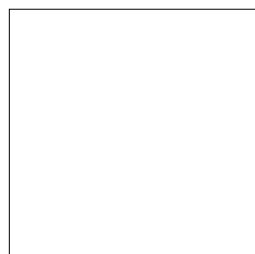




L'utilizzo di inchiostri a base di complessi metallici garantisce una resistenza all'abrasione estremamente elevata.

The infusion of inks, based on metal complexes, ensures exceptionally high resistance to abrasion.

SIZES



20,5-20,5 cm



3,9-20,5 cm



3,9-3,9 cm

La collezione propone tre formati nelle dimensioni
20,5x20,5 cm, 3,9x20,5 cm e 3,9x3,9 cm.

The collection offers three modules in the sizes
20,5x20,5 cm, 3,9x20,5 cm and 3,9x3,9 cm.





La palette è composta da otto colori ispirati a elementi di geologia, geografia, paesaggi e luoghi.

The colour palette features eight shades, inspired by elements of geology, geography, landscape, and place.



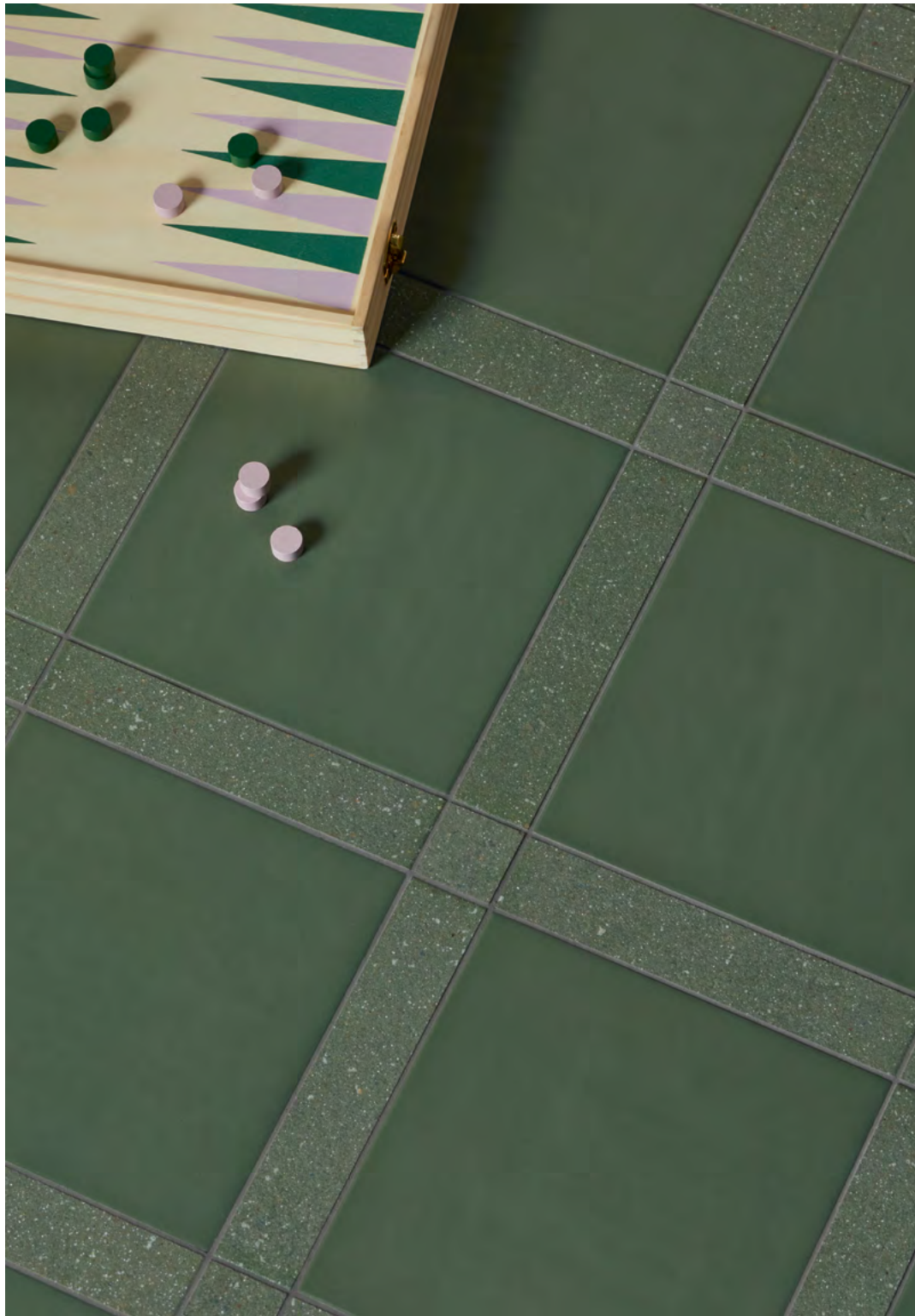


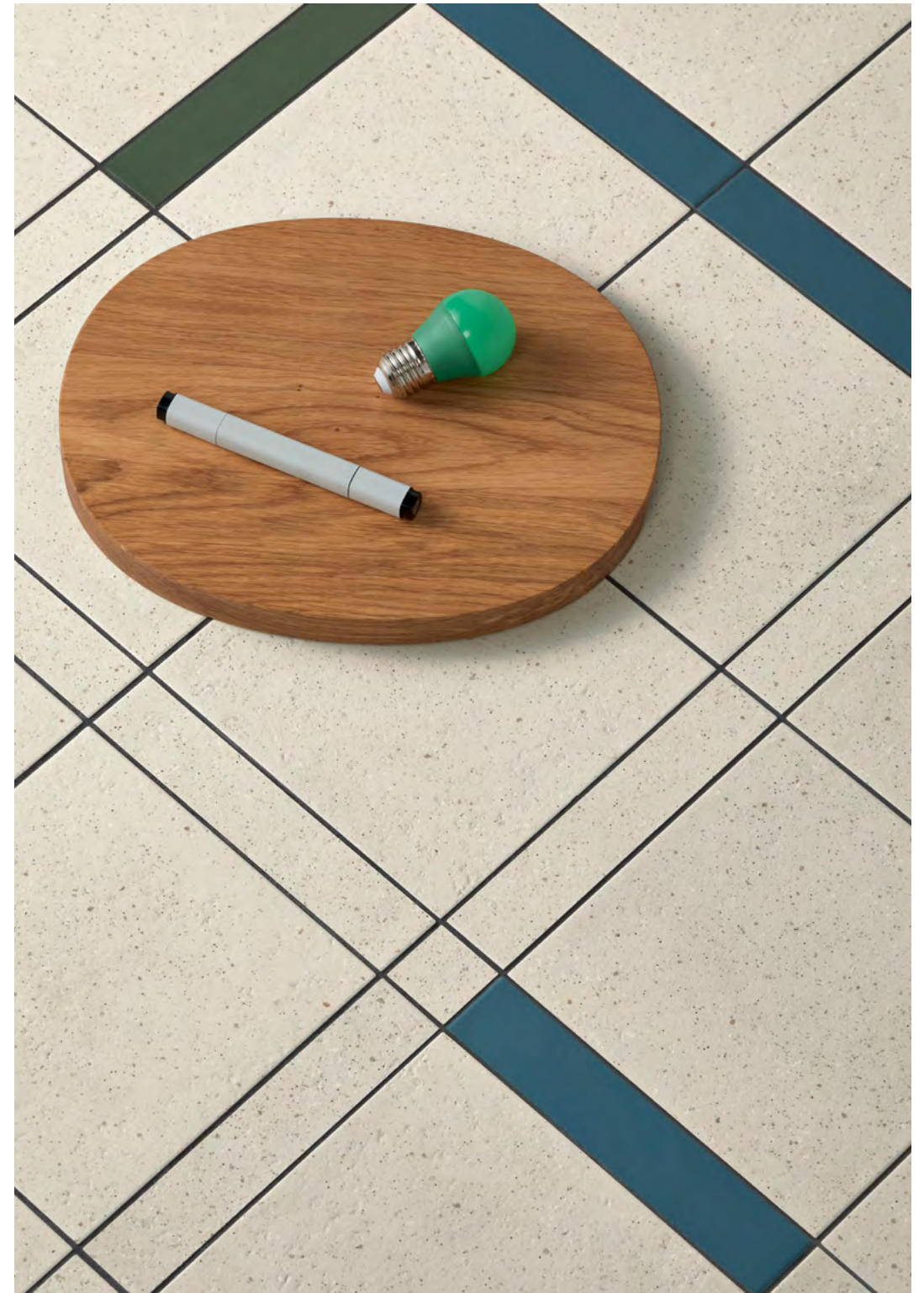


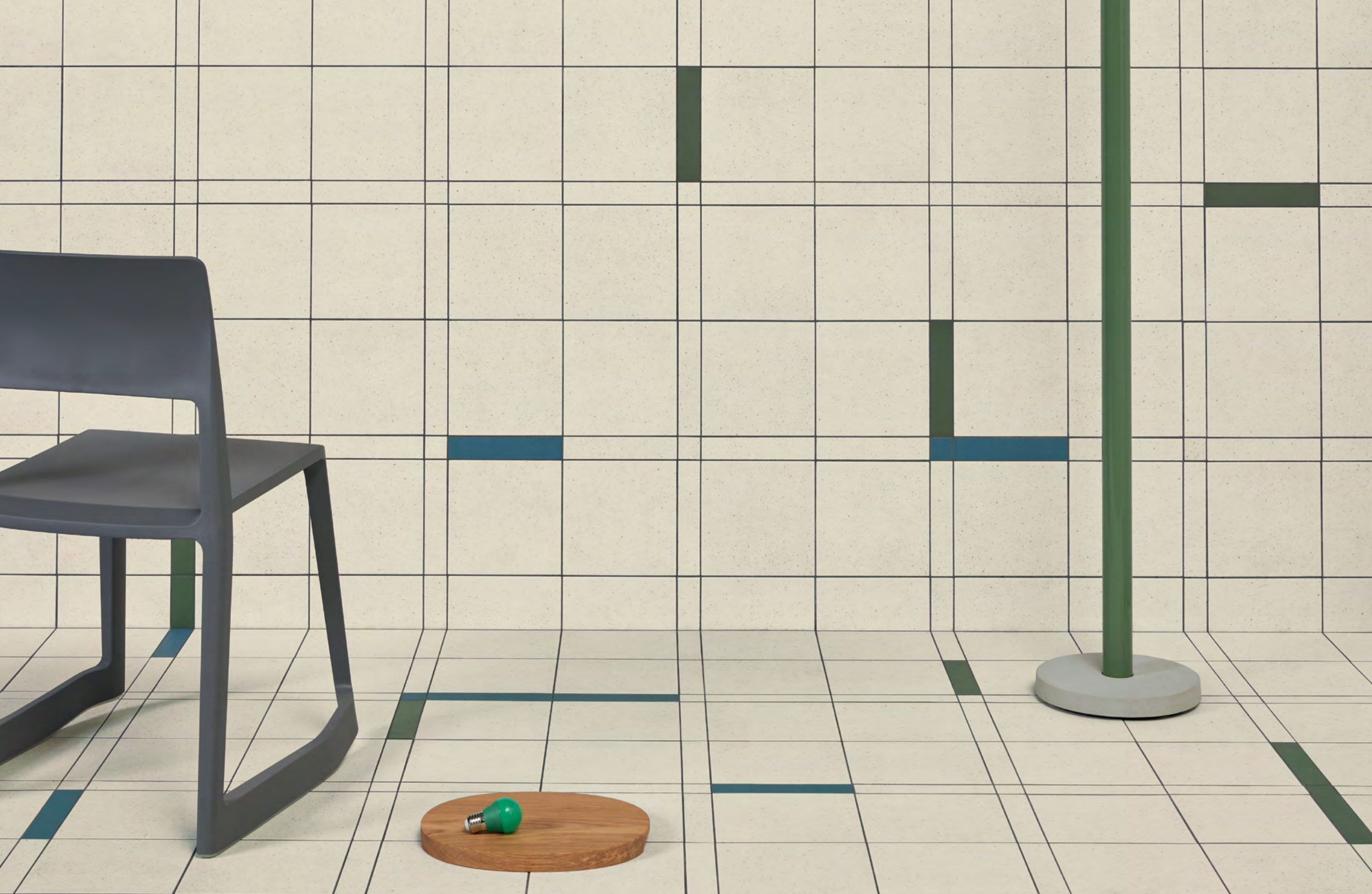


POSSIBLE COMBINATIONS



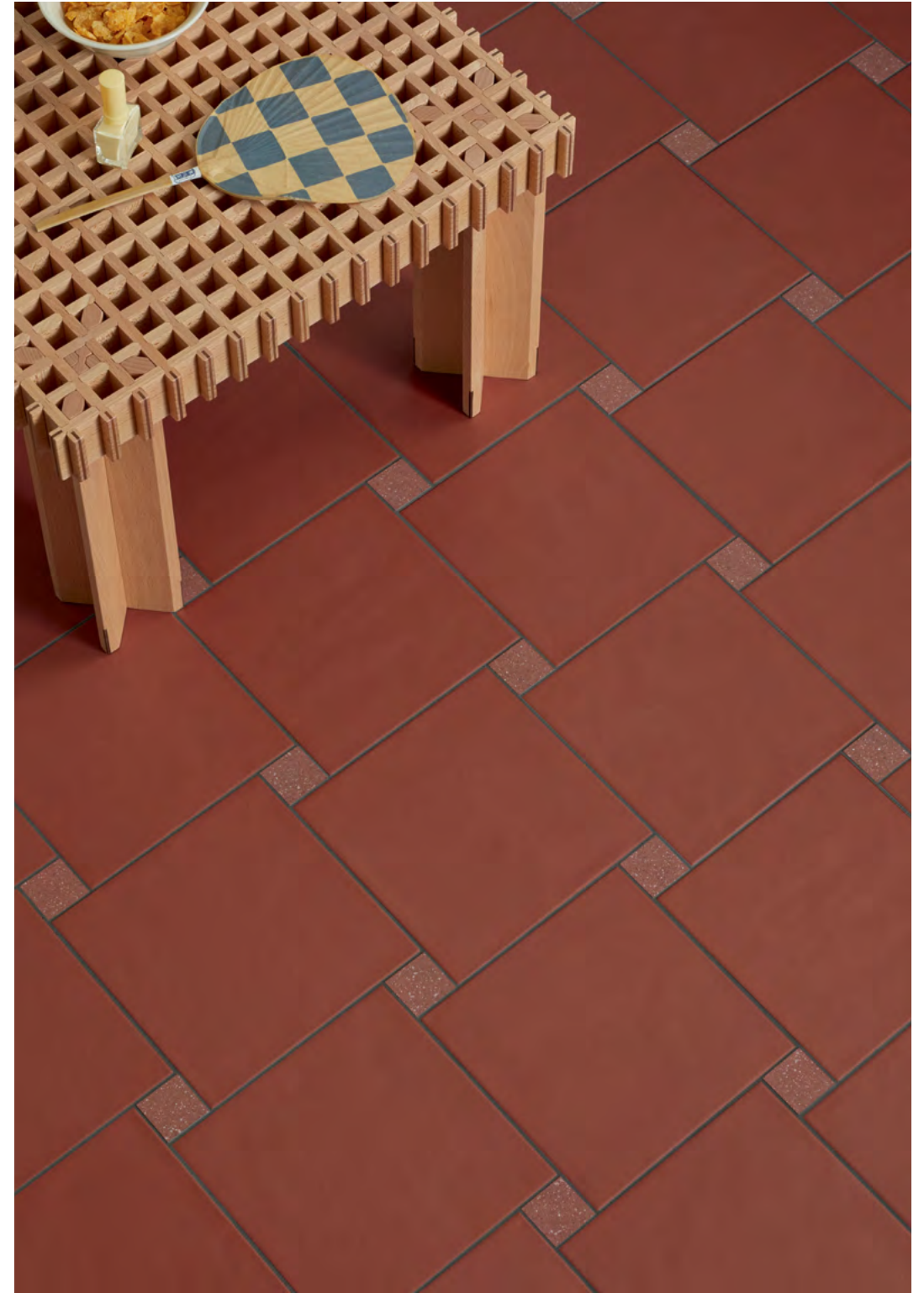




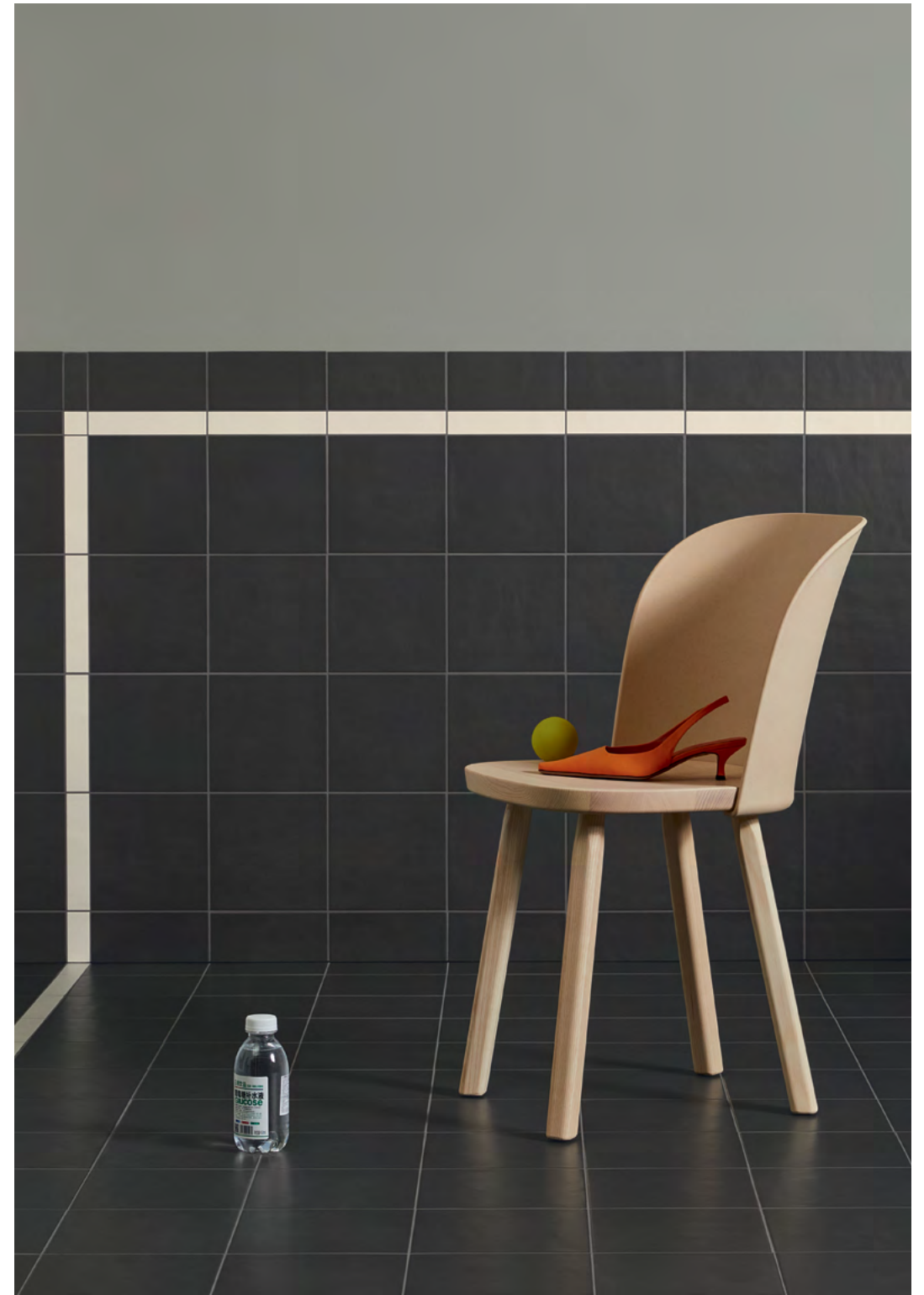












LAYOUT SUGGESTIONS

La collezione Time è stata progettata da Barber e Osgerby appositamente su tre moduli di diverse dimensioni in modo da sfruttare al meglio le potenzialità espressive date dall'accostamento dei diversi prodotti.

I moduli, rispettivamente di 20,5x20,5 cm, 3,9x20,5 cm e 3,9x3,9 cm, consentono di dar vita a infiniti layout: dai più semplici, che sfruttano semplicemente l'accostamento delle geometrie di base, ai più complessi, in cui compaiono tutte e tre le dimensioni disponibili. Le soluzioni più creative prevedono anche un leggero orientamento dei moduli, che ne consente un incastro inedito. Infine, ciascun layout può essere arricchito dall'alternanza di colorazioni e texture diverse, per rendere ogni soluzione davvero unica.

Negli schemi delle pagine successive, le percentuali sono articolate su 1 mq di composizione, mentre le quantità ricavate vengono arrotondate alla scatola completa.

Time collection was designed by Barber and Osgerby specifically on three modules of different sizes to make the most of the expressive potential given by the combination of the different products.

The modules, measuring 20,5x20,5 cm, 3,9x20,5 cm and 3,9x3,9 cm respectively, allow endless layouts to come to life: from the simplest, which exploit the juxtaposition of basic geometries, to the most complex, in which all three available dimensions appear. The most creative solutions also include a slight orientation of the modules, allowing them to fit together in an unprecedented way. Finally, each layout can be enhanced by alternating different colours and textures to make each solution truly unique.

In the diagrams on the following pages, the percentages are organised on a composition of 1 sqm, while the amounts obtained are rounded to the full box.

POSA 1

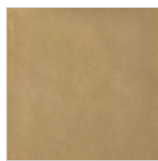


100 %
20,5x20,5 cm

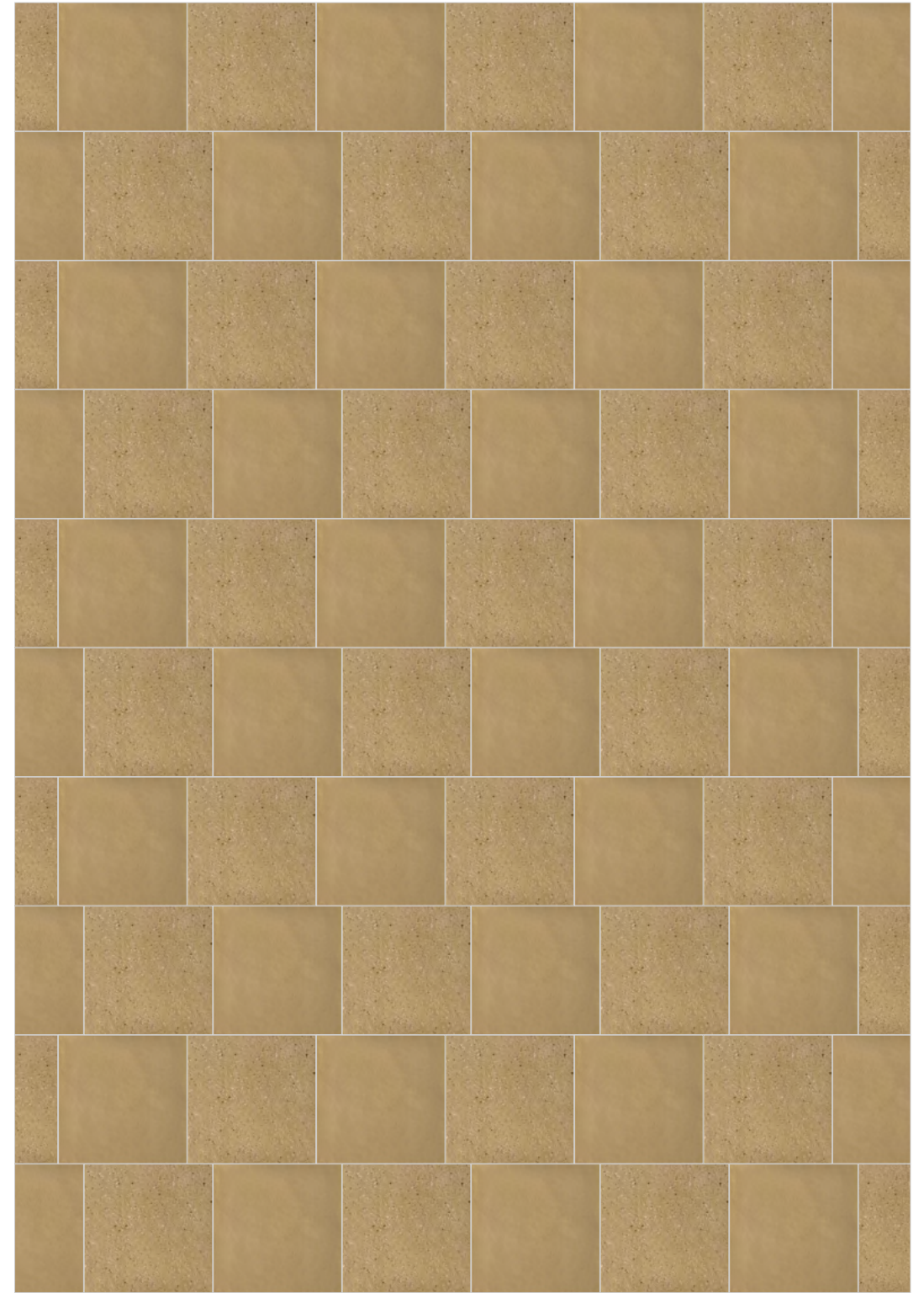
POSA 1A



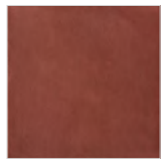
50%
Sahara Sand Rough
20,5x20,5 cm



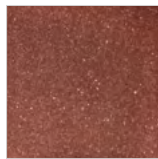
50%
Sahara Sand Smooth
20,5x20,5 cm



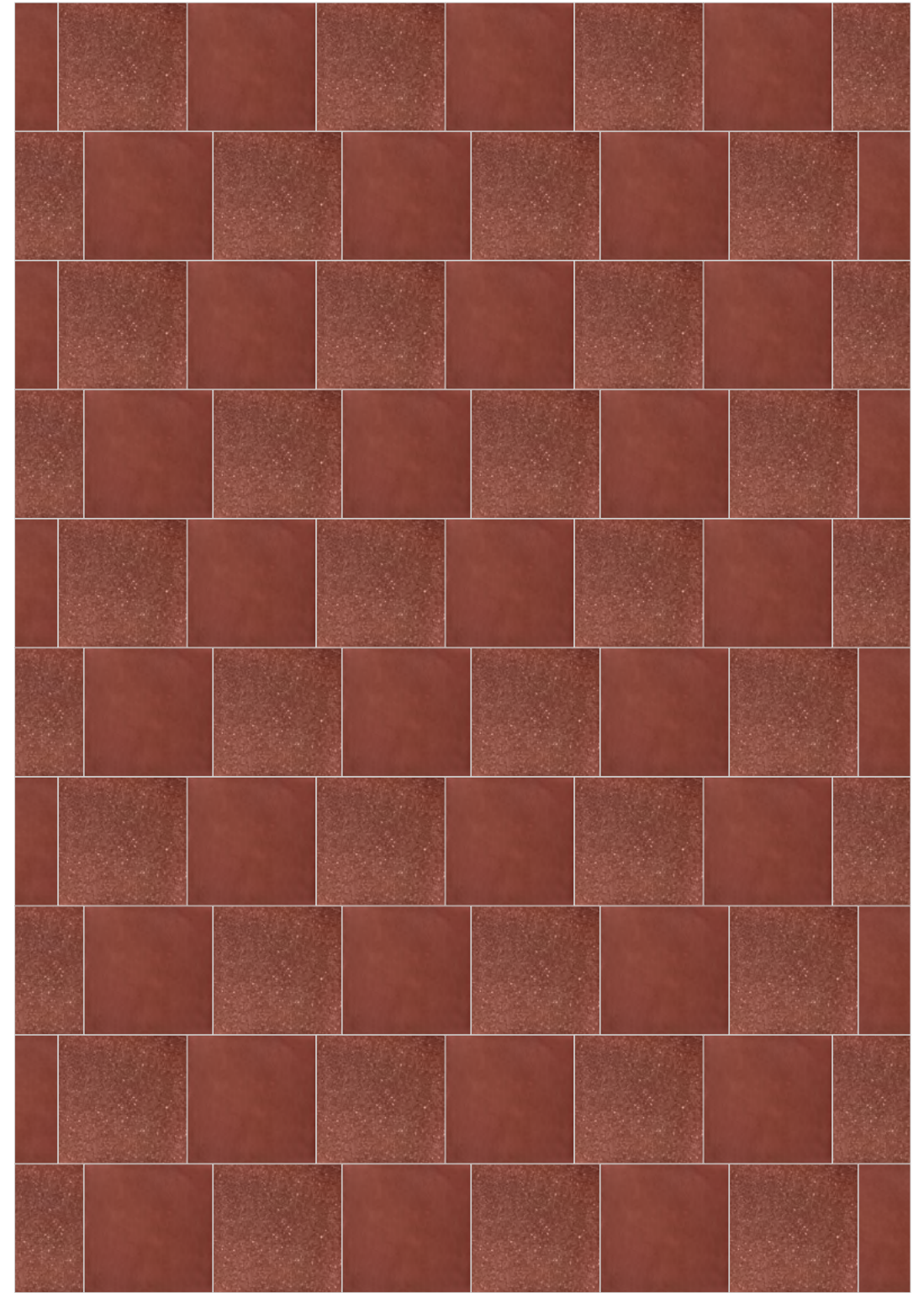
POSA 1B



50%
Salta Red Smooth
20,5x20,5 cm



50%
Salta Red Rough
20,5x20,5 cm



POSA 1C

Il seguente schema di posa comporta un'alternanza di texture e di colori randomica, per cui non è possibile calcolare la quantità dei singoli articoli per metro quadro.

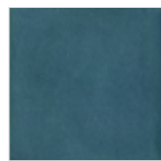
The suggested layout features a random alternation of textures and colours, so the quantity of each featured element can't be calculated per squared meter.



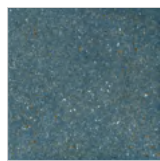
Dover White Smooth
20,5x20,5 cm



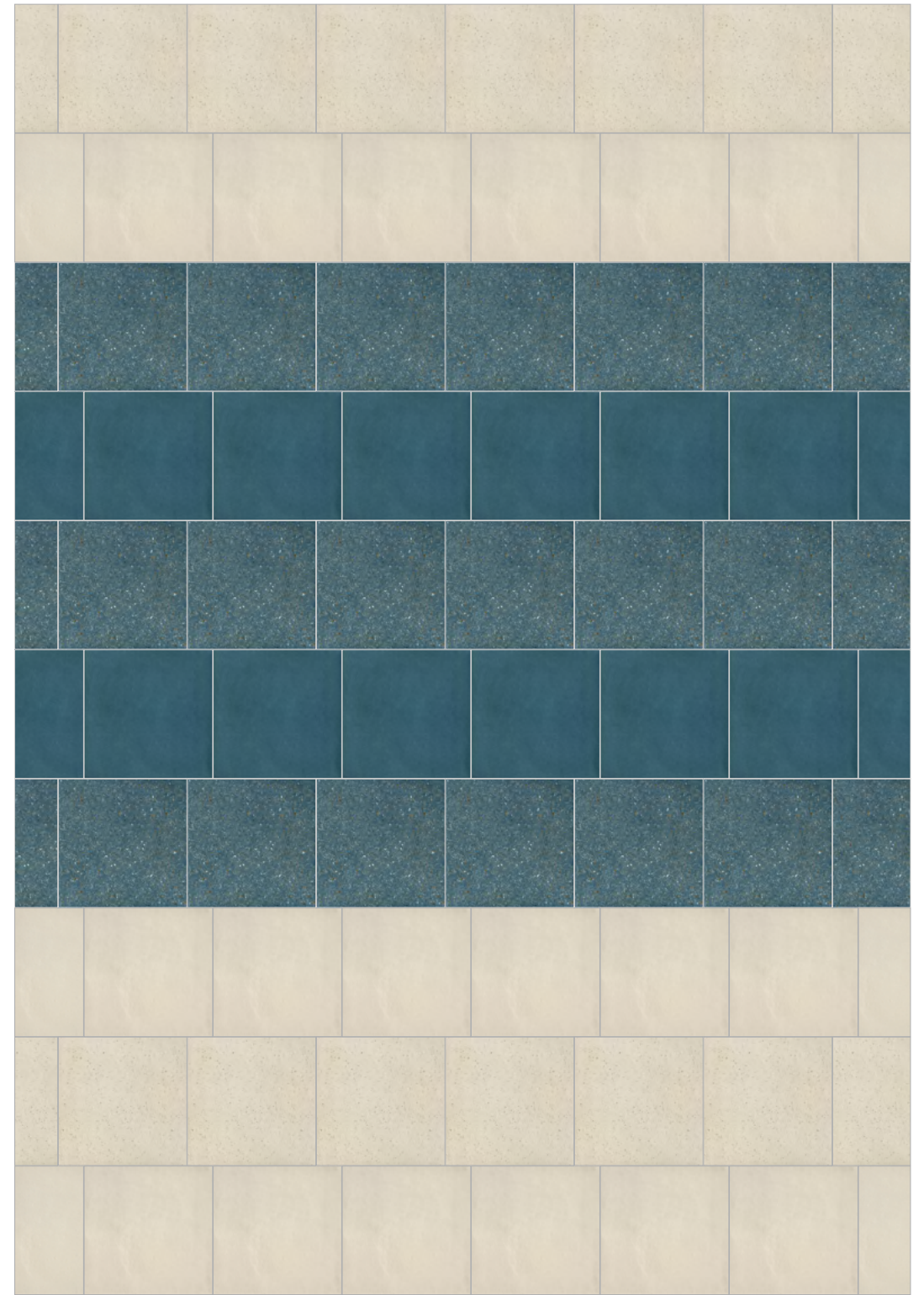
Dover White Rough
20,5x20,5 cm



Virginia Blue Smooth
20,5x20,5 cm



Virginia Blue Rough
20,5x20,5 cm



POSA 2

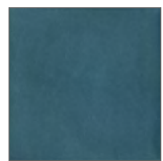


84%
20,5x20,5 cm



16%
3,9x20,5 cm

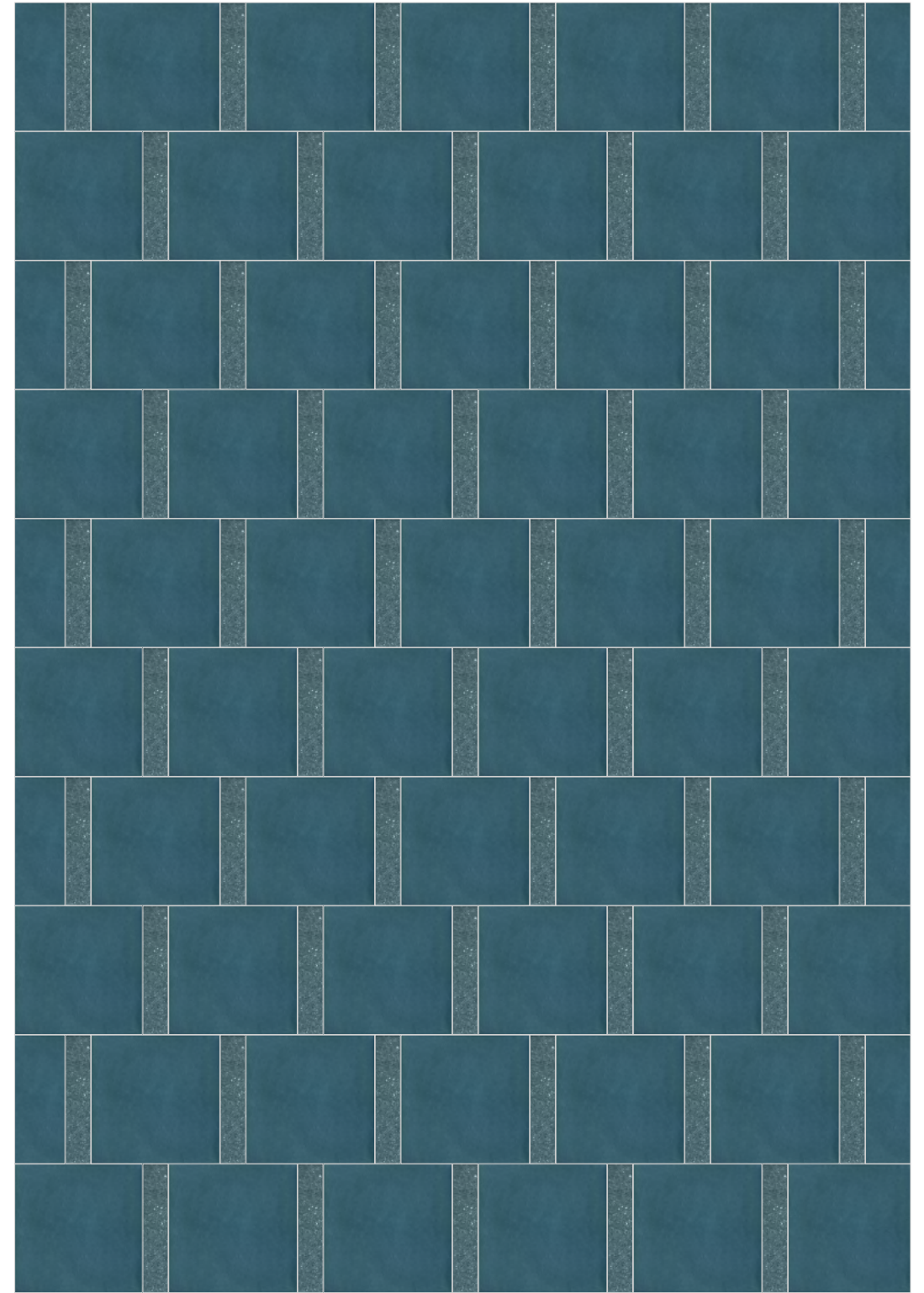
POSA 2A



84%
Virginia Blue Smooth
20,5x20,5 cm



16%
Virginia Blue Rough
3,9x20,5 cm



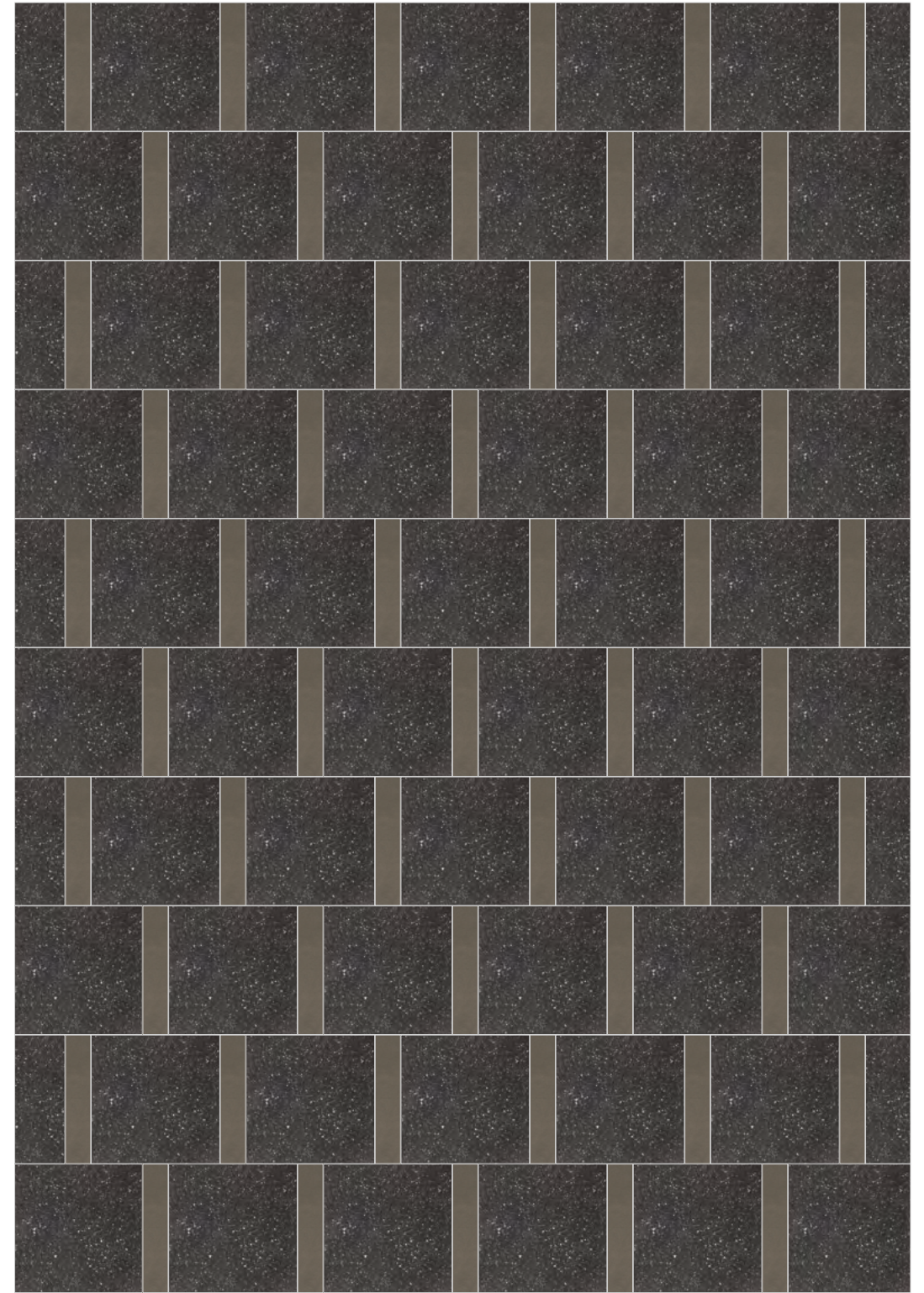
POSA 2B



84%
Etna Black Rough
20,5x20,5 cm



16%
Atlas Brown Smooth
3,9x20,5 cm



POSA 2C

Il seguente schema di posa comporta un'alternanza di texture e di colori randomica, per cui non è possibile calcolare la quantità dei singoli articoli per metro quadro.

The suggested layout features a random alternation of textures and colours, so the quantity of each featured element can't be calculated per squared meter.



Dakota Grey Smooth
20,5x20,5 cm



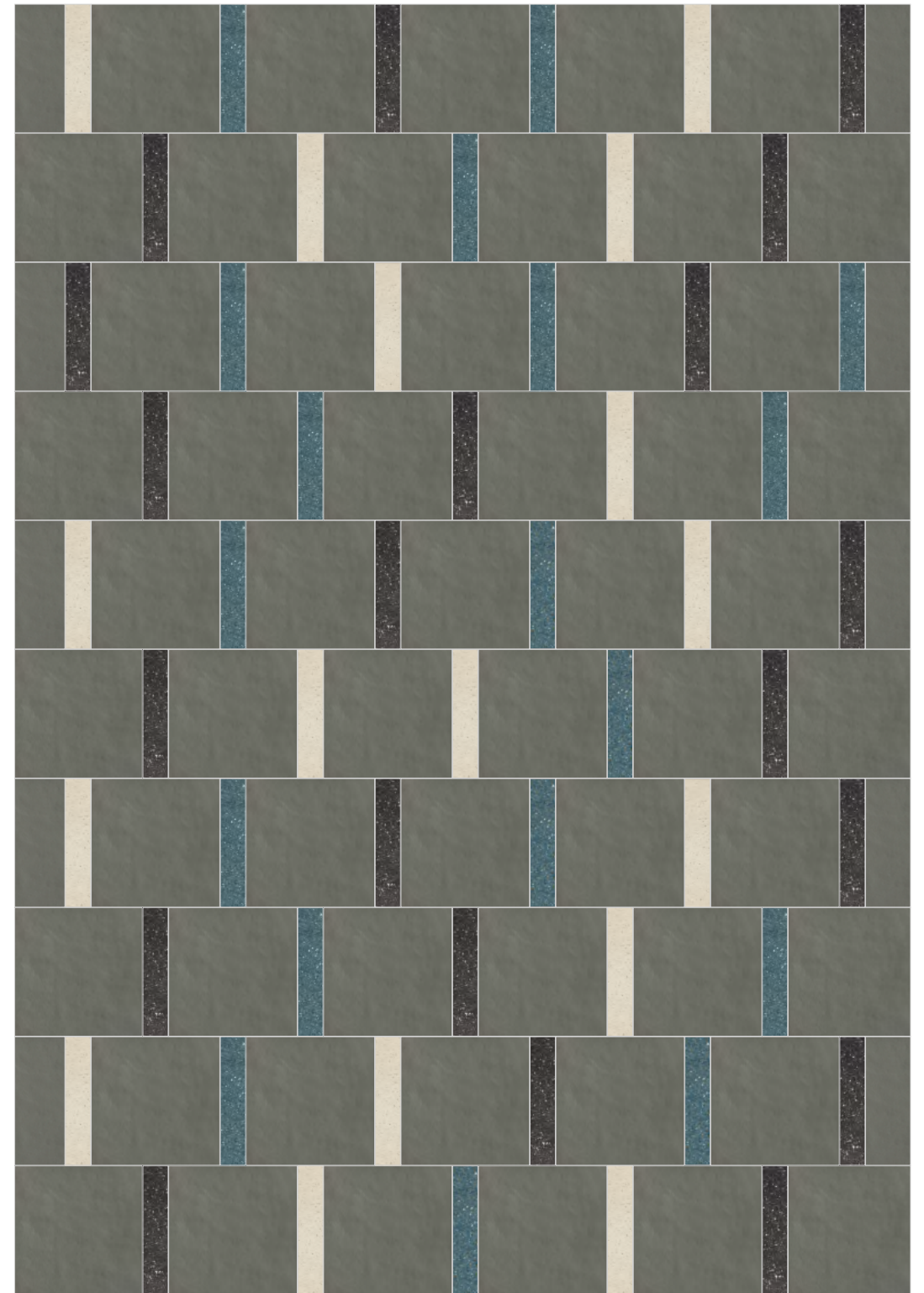
Dover White Rough
3,9x20,5 cm



Etna Black Rough
3,9x20,5 cm



Virginia Blue Rough
3,9x20,5 cm



POSA 3

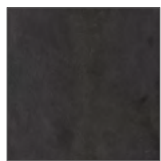


84%
20,5x20,5 cm



16%
3,9x20,5 cm

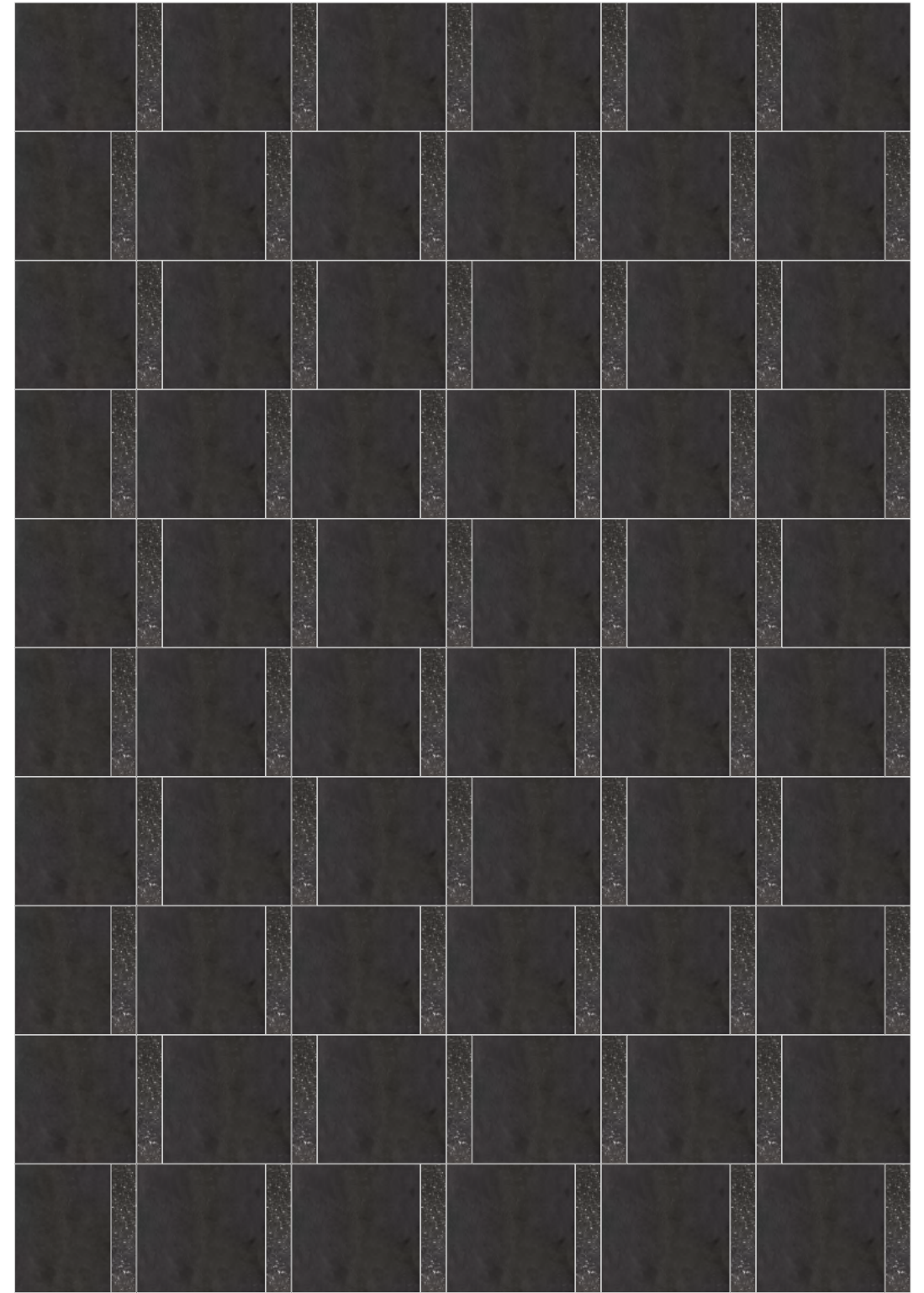
POSA 3A



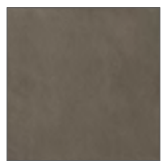
84%
Etna Black Smooth
20,5x20,5 cm



16%
Etna Black Rough
3,9x20,5 cm



POSA 3B



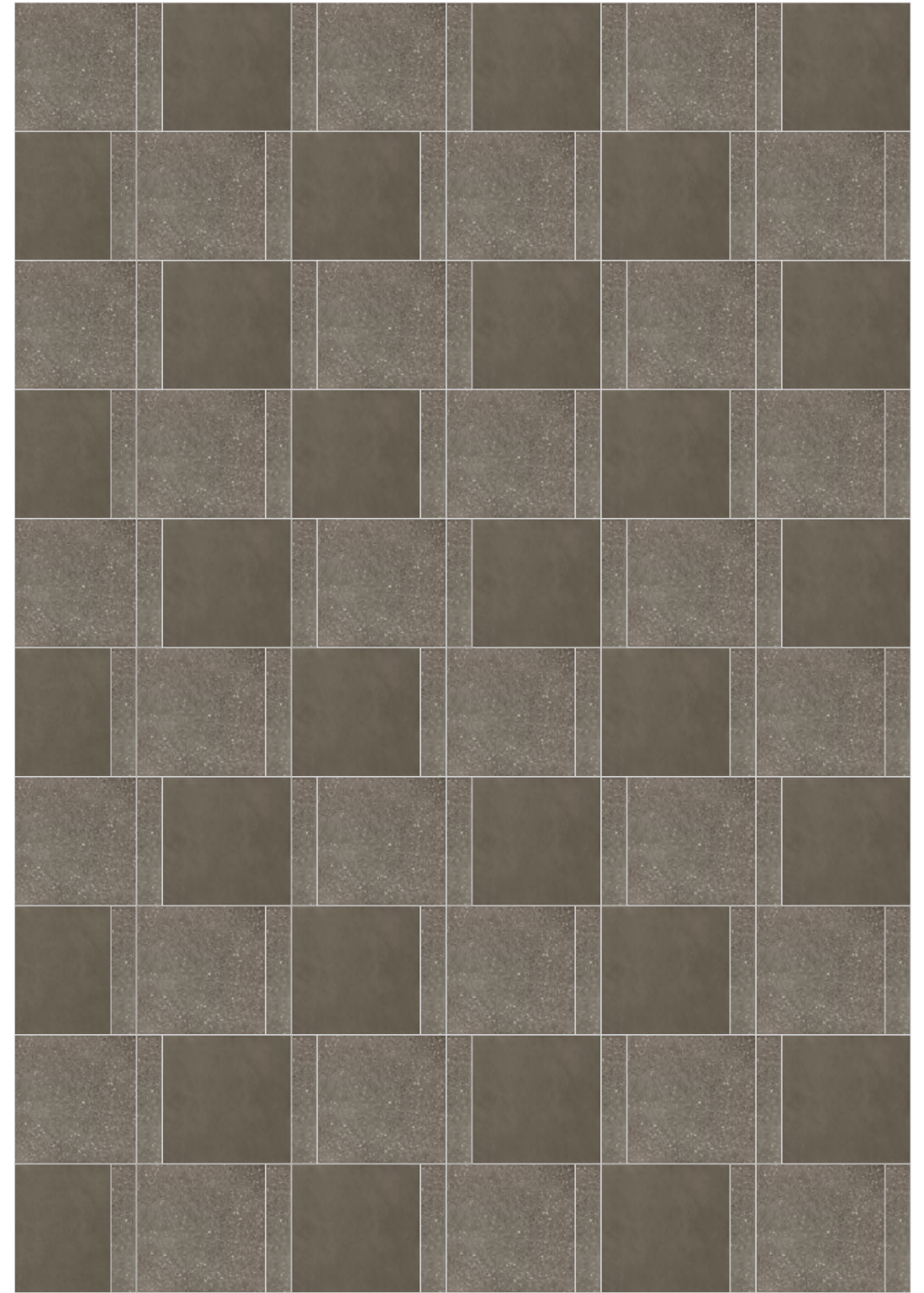
42%
Atlas Brown Smooth
20,5x20,5 cm



42%
Atlas Brown Rough
20,5x20,5 cm



16%
Atlas Brown Rough
3,9x20,5 cm



POSA 3C

Il seguente schema di posa comporta un'alternanza di texture e di colori randomica, per cui non è possibile calcolare la quantità dei singoli articoli per metro quadro.

The suggested layout features a random alternation of textures and colours, so the quantity of each featured element can't be calculated per squared meter.



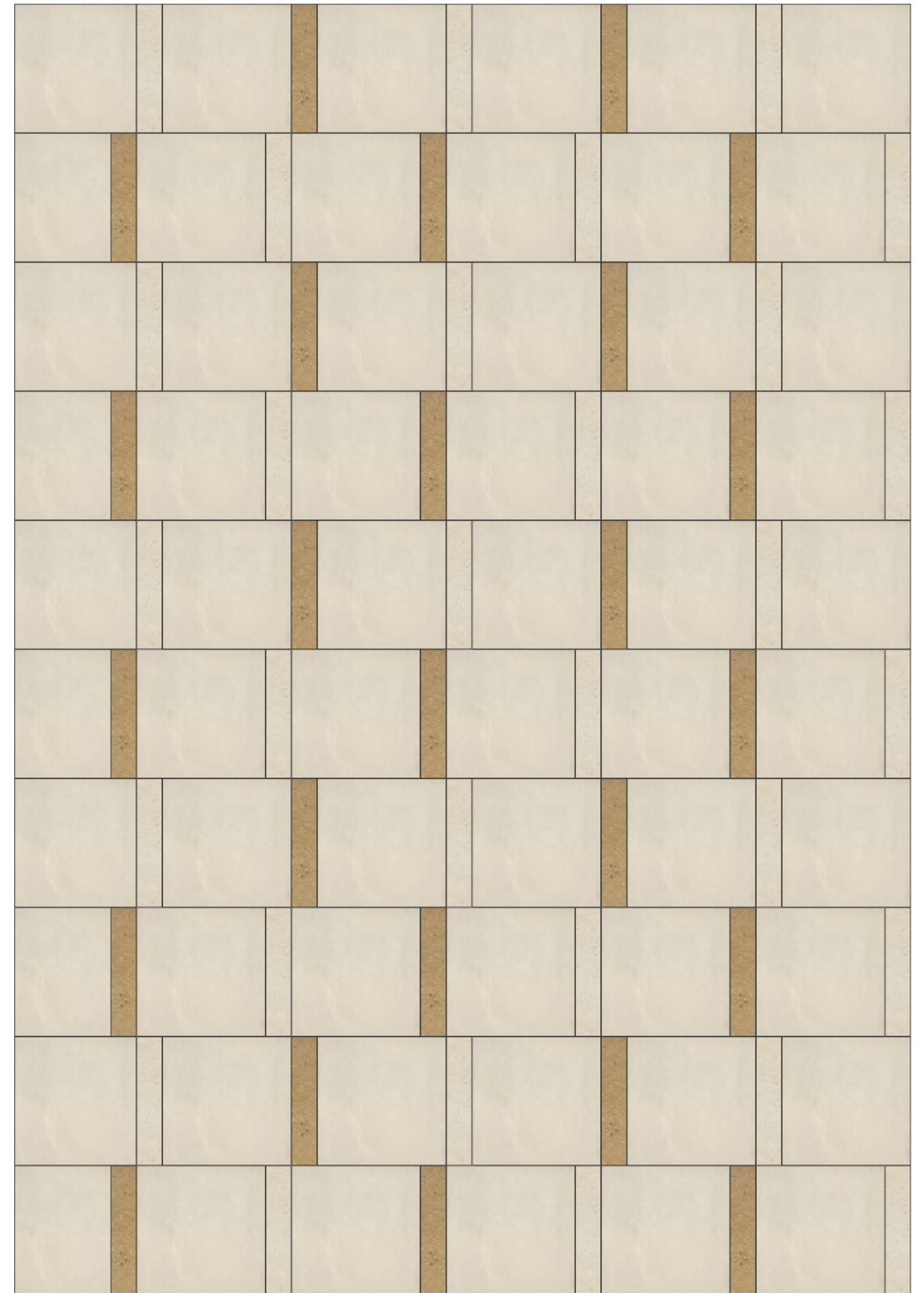
Dover White Smooth
20,5x20,5 cm



Dover White Rough
3,9x20,5 cm



Sahara Sand Rough
3,9x20,5 cm



POSA 4



84%
20,5x20,5 cm



16%
3,9x20,5 cm

POSA 4A



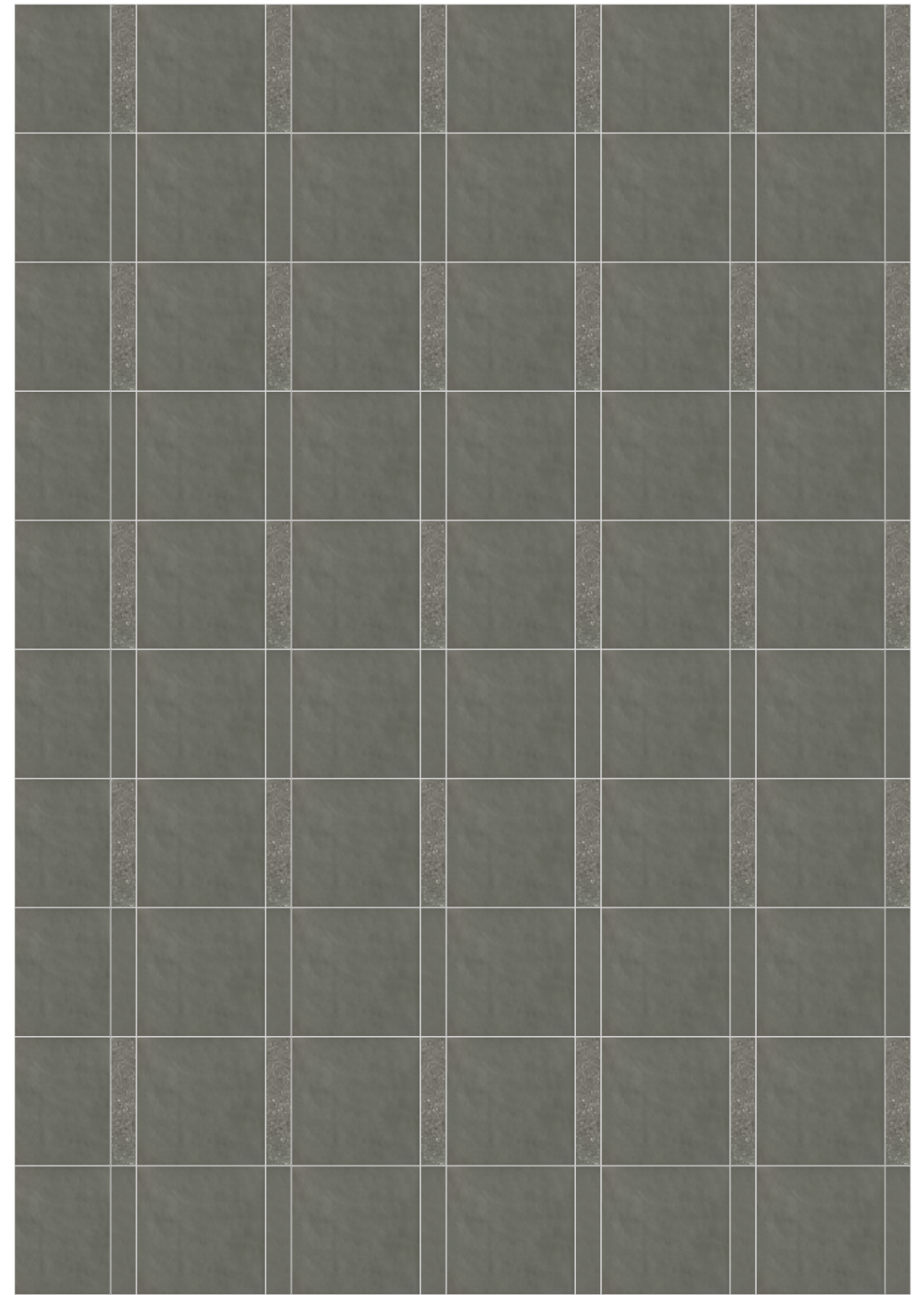
84%
Dakota Grey Smooth
20,5x20,5 cm



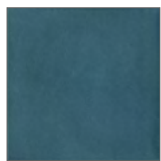
8%
Dakota Grey Smooth
3,9x20,5 cm



8%
Dakota Grey Rough
3,9x20,5 cm



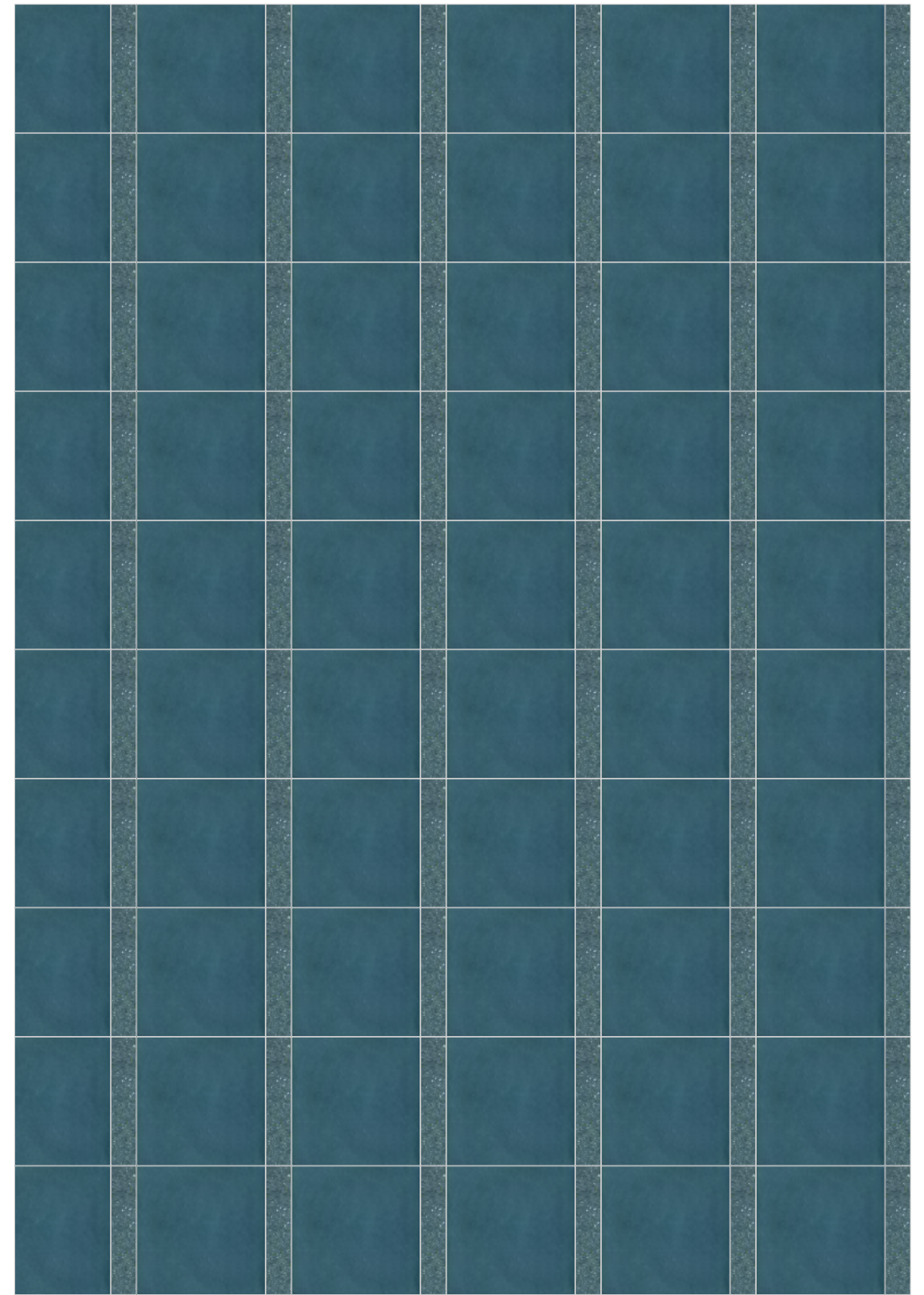
POSA 4B



84%
Virginia Blue Smooth
20,5x20,5 cm



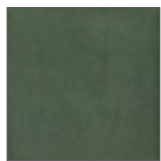
16%
Virginia Blue Rough
3,9x20,5 cm



POSA 4C

Il seguente schema di posa comporta un'alternanza di texture e di colori randomica, per cui non è possibile calcolare la quantità dei singoli articoli per metro quadro.

The suggested layout features a random alternation of textures and colours, so the quantity of each featured element can't be calculated per squared meter.



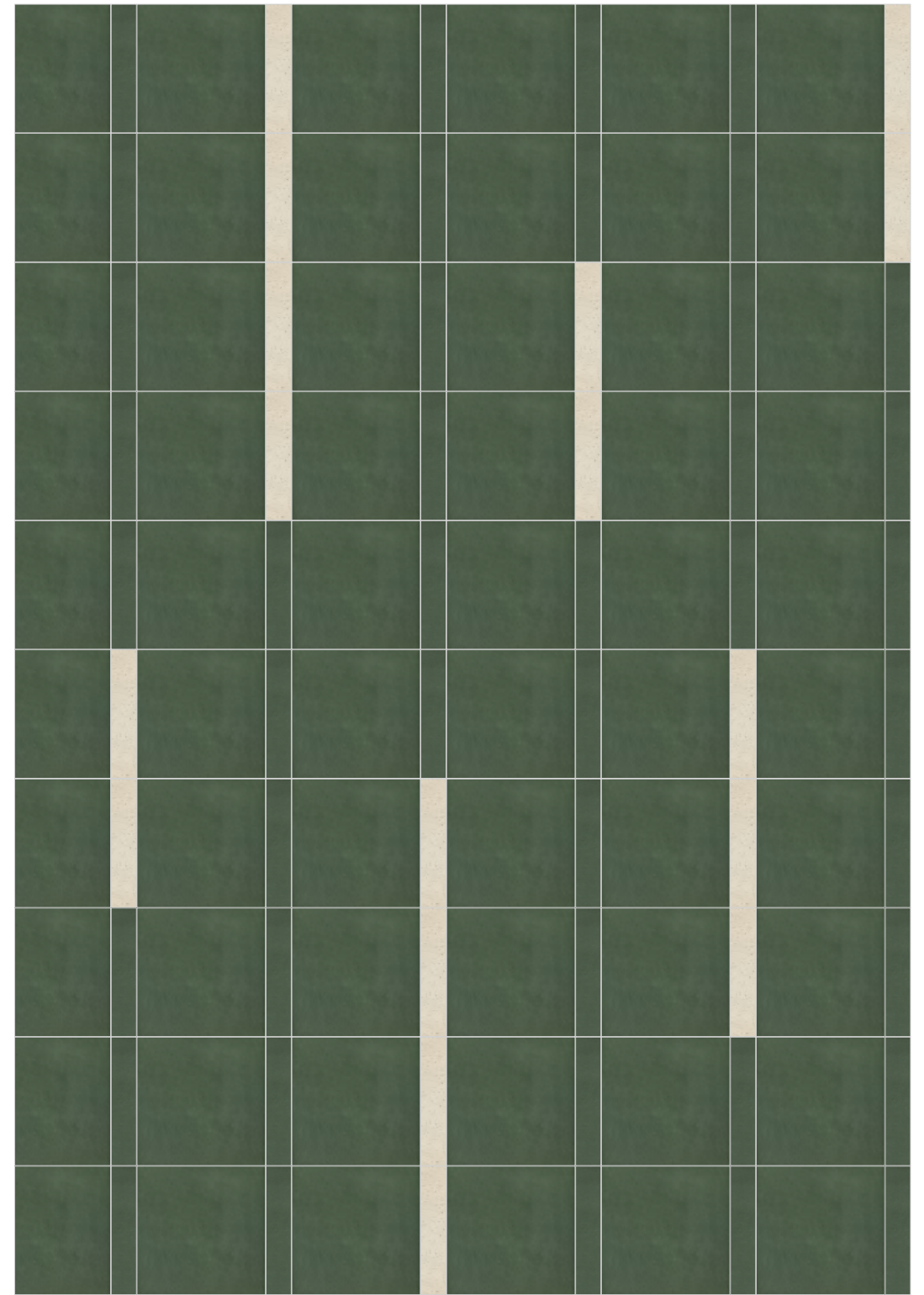
Highland Green Smooth
20,5x20,5 cm



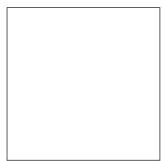
Highland Green Smooth
3,9x20,5 cm



Dover White Rough
3,9x20,5 cm



POSA 5



83%
20,5x20,5 cm



16%
3,9x20,5 cm



1%
3,9x3,9 cm

POSA 5A



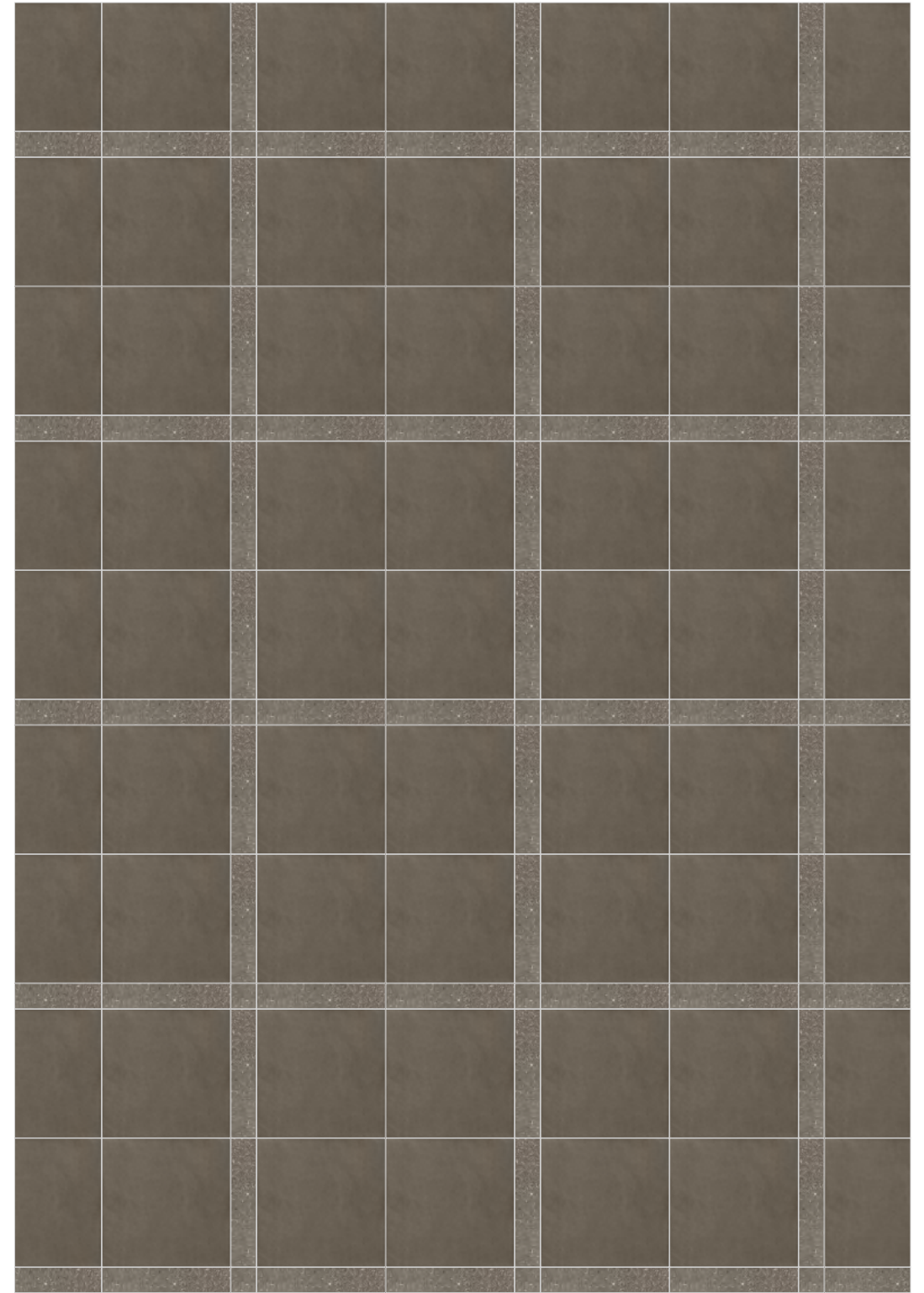
83%
Atlas Brown Smooth
20,5x20,5 cm



8%
Atlas Brown Rough
3,9x20,5 cm



1%
Atlas Brown Rough
3,9x3,9 cm



POSA 5B



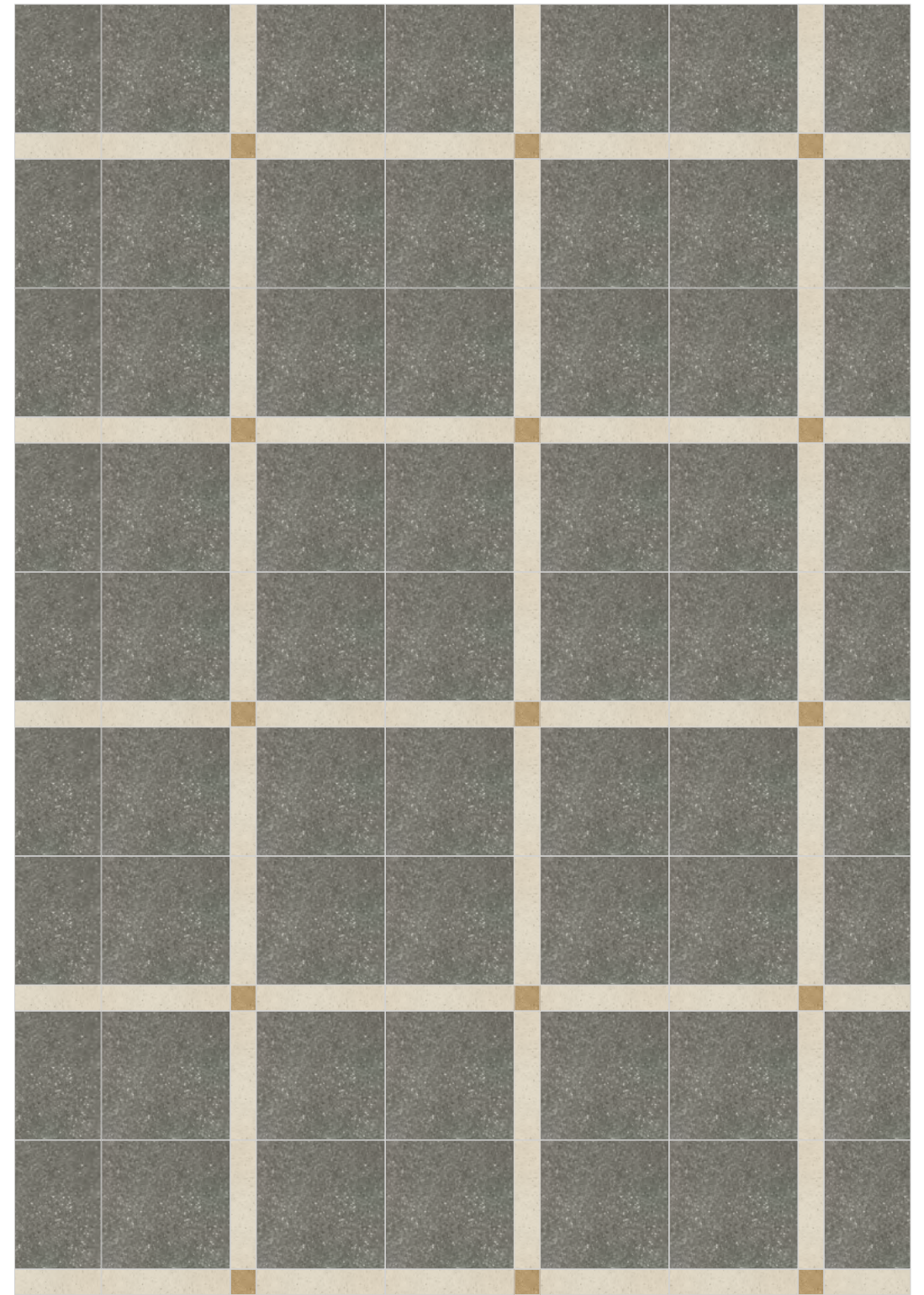
83%
Dakota Grey Rough
20,5x20,5 cm



16%
Dover White Rough
3,9x20,5 cm



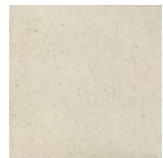
1%
Sahara Sand Rough
3,9x3,9 cm



POSA 5C

Il seguente schema di posa comporta un'alternanza di texture e di colori randomica, per cui non è possibile calcolare la quantità dei singoli articoli per metro quadro.

The suggested layout features a random alternation of textures and colours, so the quantity of each featured element can't be calculated per squared meter.



Dover White Rough
20,5x20,5 cm



Dover White Rough
3,9x3,9 cm



Virginia Blue Smooth
3,9x3,9 cm



Highland Green Smooth
3,9x3,9 cm



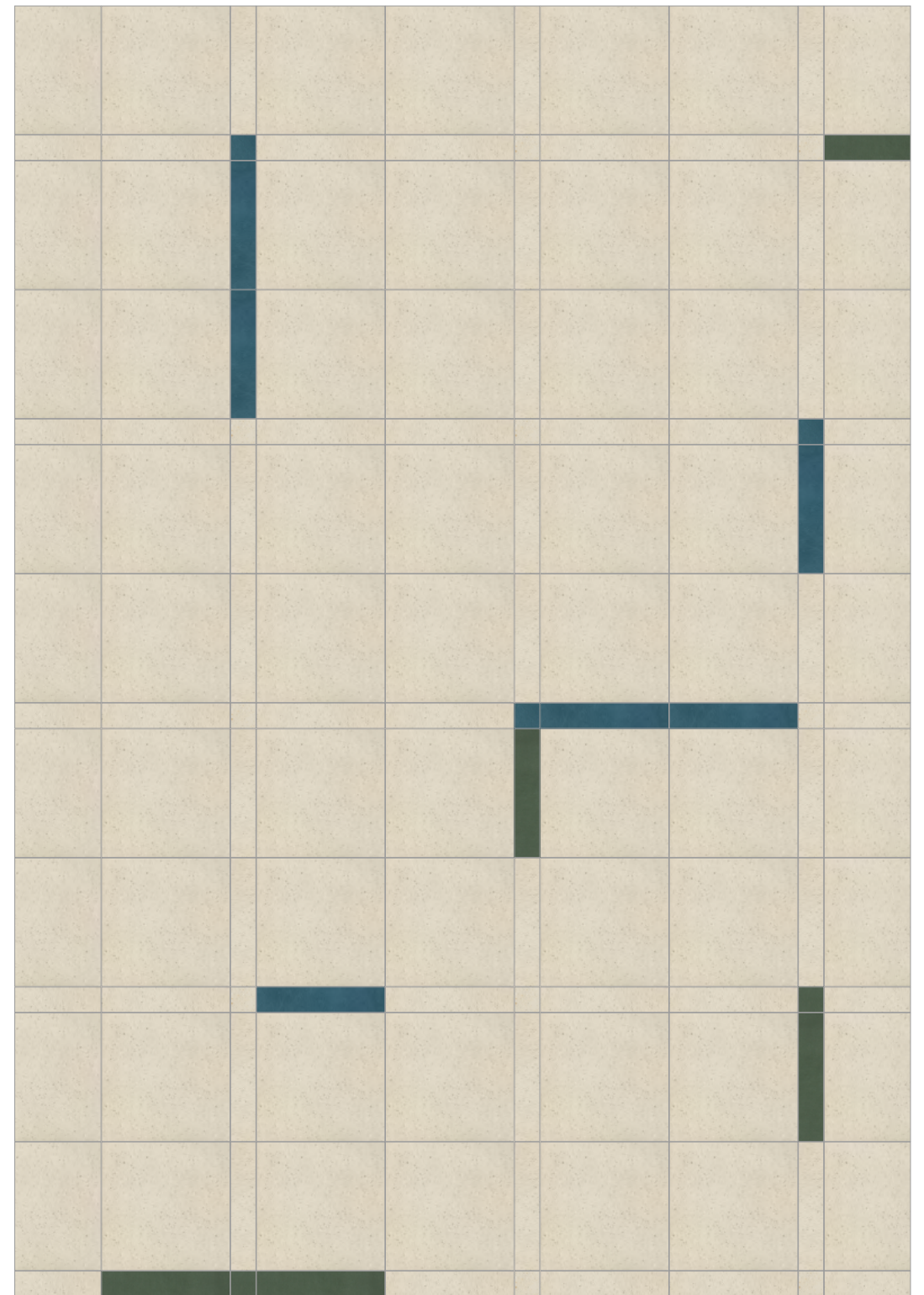
Dover White Rough
3,9x20,5 cm



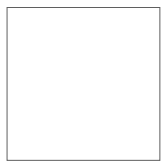
Virginia Blue Smooth
3,9x20,5 cm



Highland Green Smooth
3,9x20,5 cm



POSA 6



70%
20,5x20,5 cm

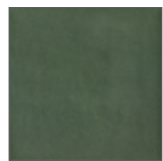


27%
3,9x20,5 cm



3%
3,9x3,9 cm

POSA 6A



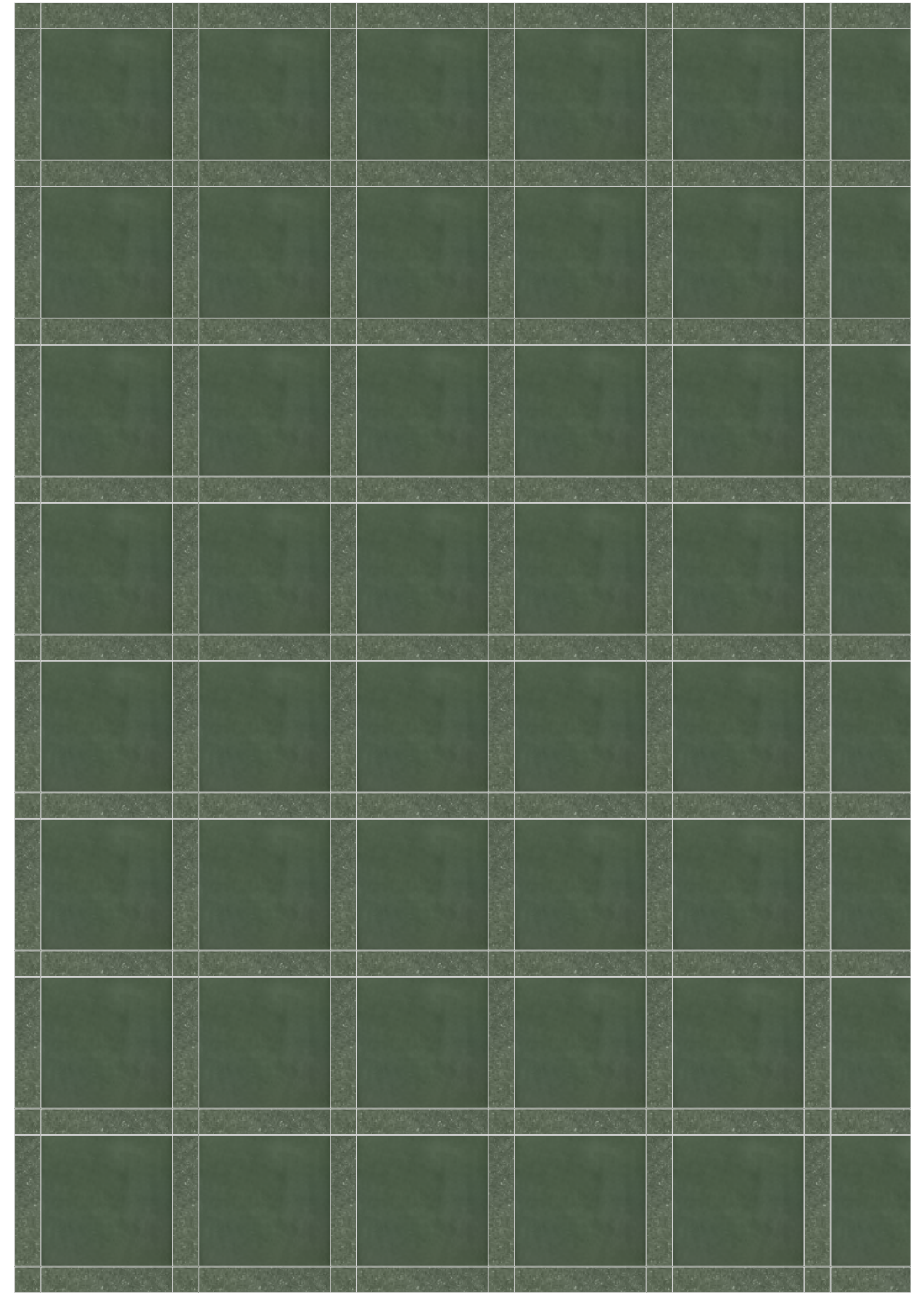
70%
Highland Green Smooth
20,5x20,5 cm



27%
Highland Green Rough
3,9x20,5 cm



3%
Highland Green Rough
3,9x3,9 cm



POSA 6B



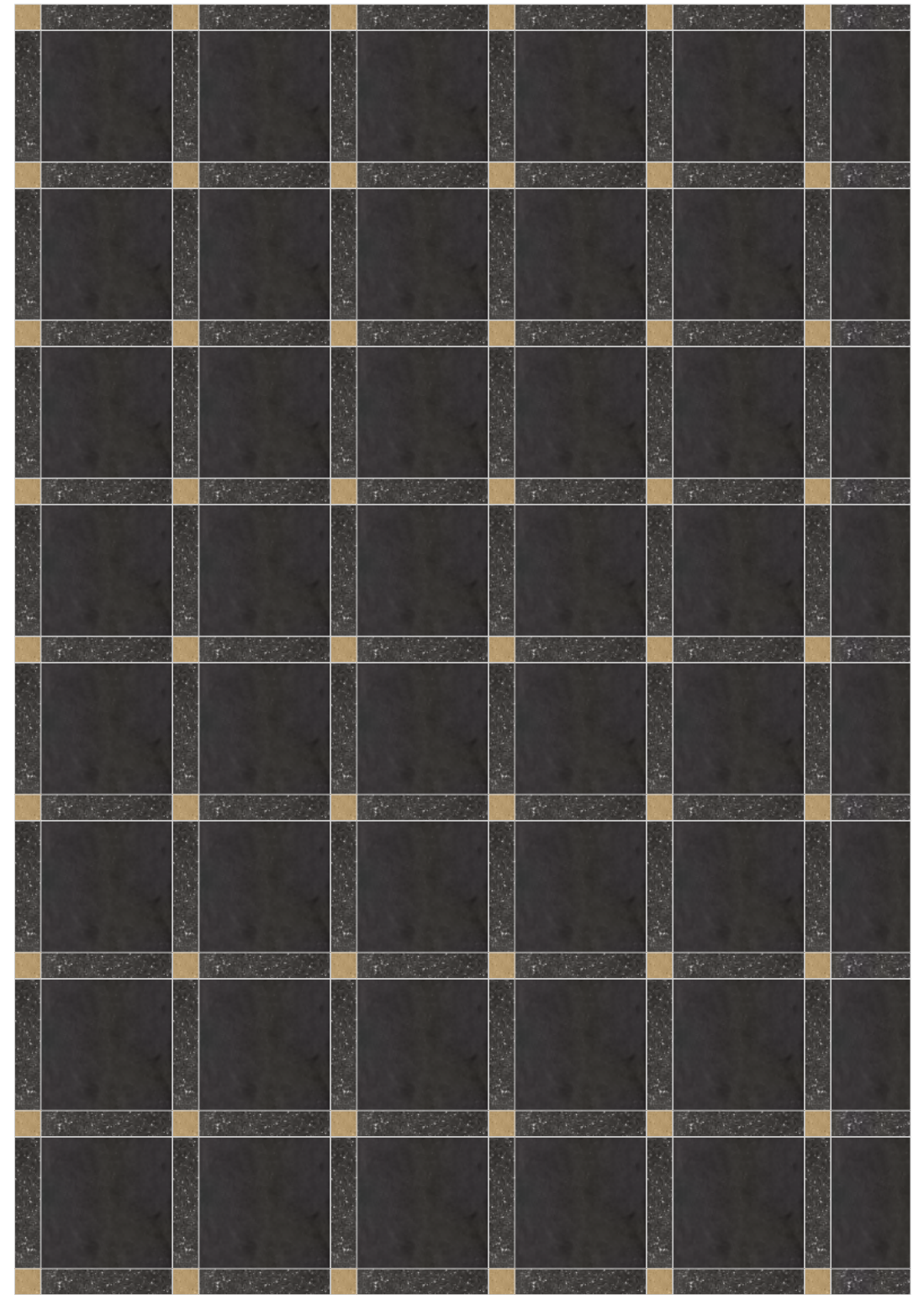
70%
Etna Black Smooth
20,5x20,5 cm



27%
Etna Black Rough
3,9x20,5 cm



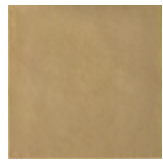
3%
Sahara Sand Rough
3,9x3,9 cm



POSA 6C

Il seguente schema di posa comporta un'alternanza di texture e di colori randomica, per cui non è possibile calcolare la quantità dei singoli articoli per metro quadro.

The suggested layout features a random alternation of textures and colours, so the quantity of each featured element can't be calculated per squared meter.



Sahara Sand Smooth
20,5x20,5 cm



Sahara Sand Smooth
3,9x3,9 cm



Dover White Rough
3,9x3,9 cm



Dakota Grey Smooth
3,9x3,9 cm



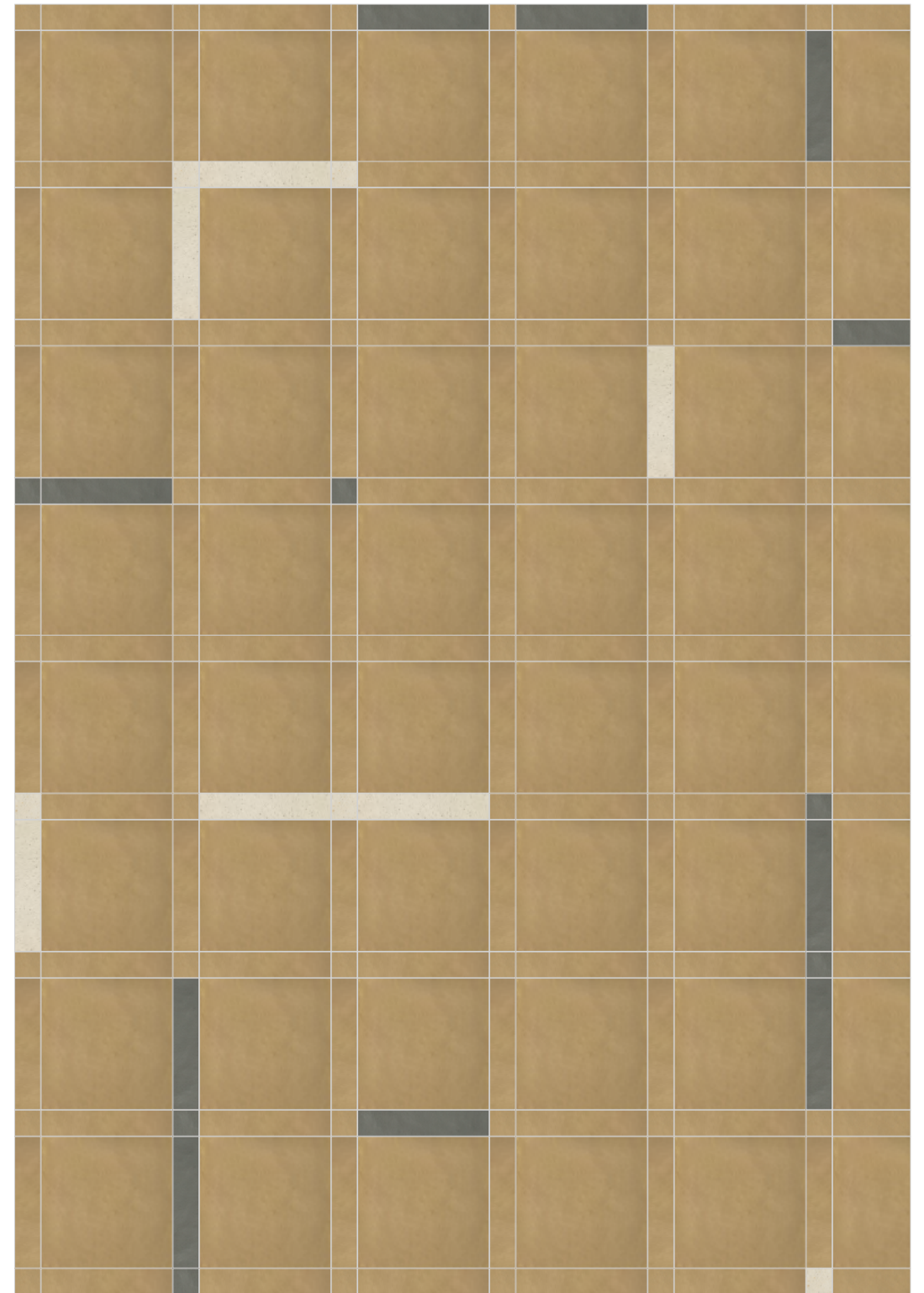
Sahara Sand Smooth
3,9x20,5 cm



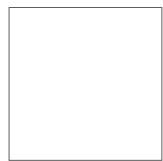
Dover White Rough
3,9x20,5 cm



Dakota Grey Smooth
3,9x20,5 cm



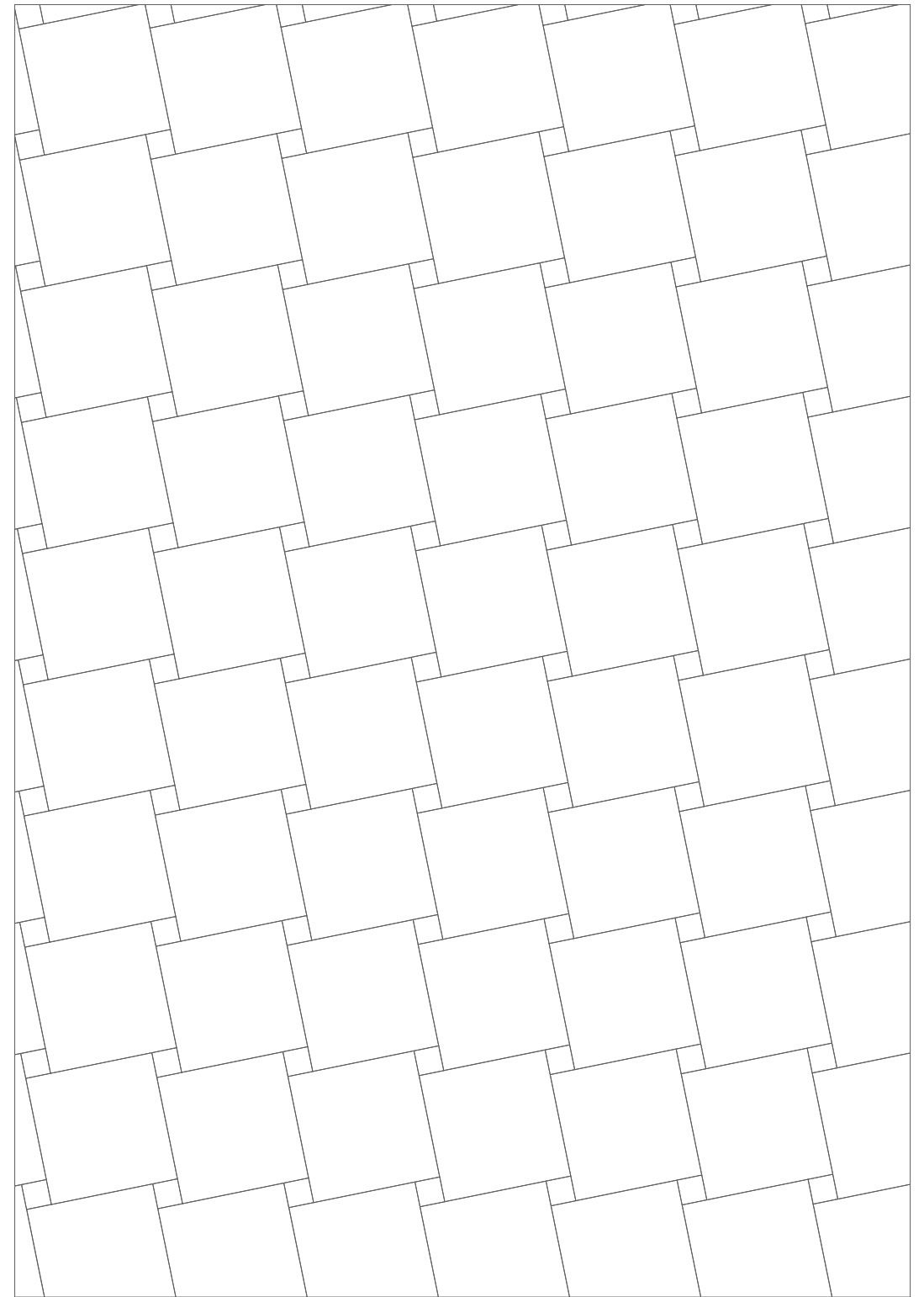
POSA 7



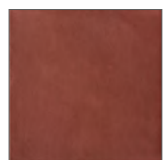
96%
20,5x20,5 cm



4%
3,9x3,9 cm



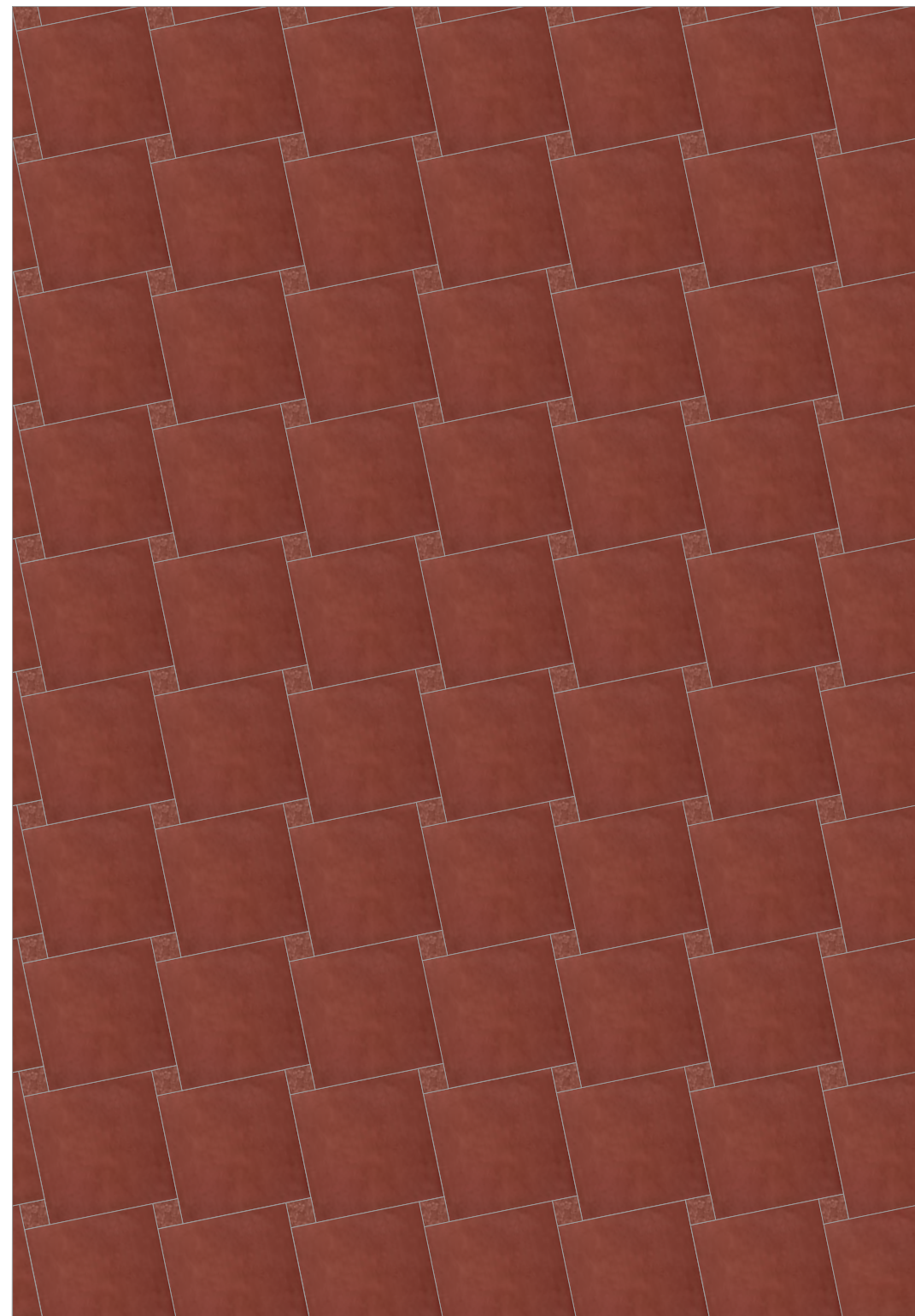
POSA 7A



96%
Salta Red Smooth
20,5x20,5 cm



4%
Salta Red Rough
3,9x3,9 cm



POSA 7B



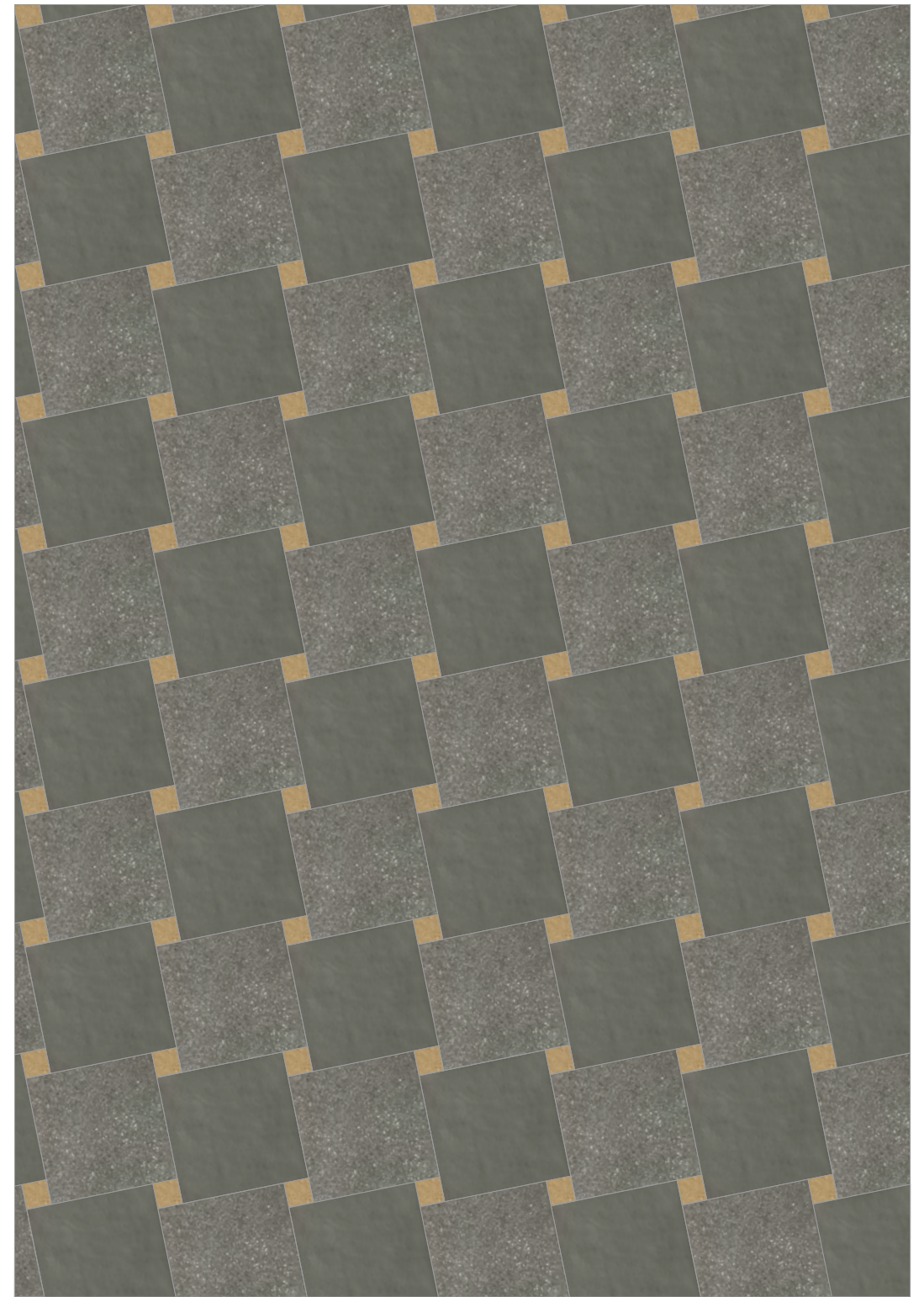
48%
Dakota Grey Smooth
20,5x20,5 cm



48%
Dakota Grey Rough
20,5x20,5 cm



4%
Sahara Sand Rough
3,9x3,9 cm



POSA 7C

Il seguente schema di posa comporta un'alternanza di texture e di colori randomica, per cui non è possibile calcolare la quantità dei singoli articoli per metro quadro.

The suggested layout features a random alternation of textures and colours, so the quantity of each featured element can't be calculated per squared meter.



Dover White Rough
20,5x20,5 cm



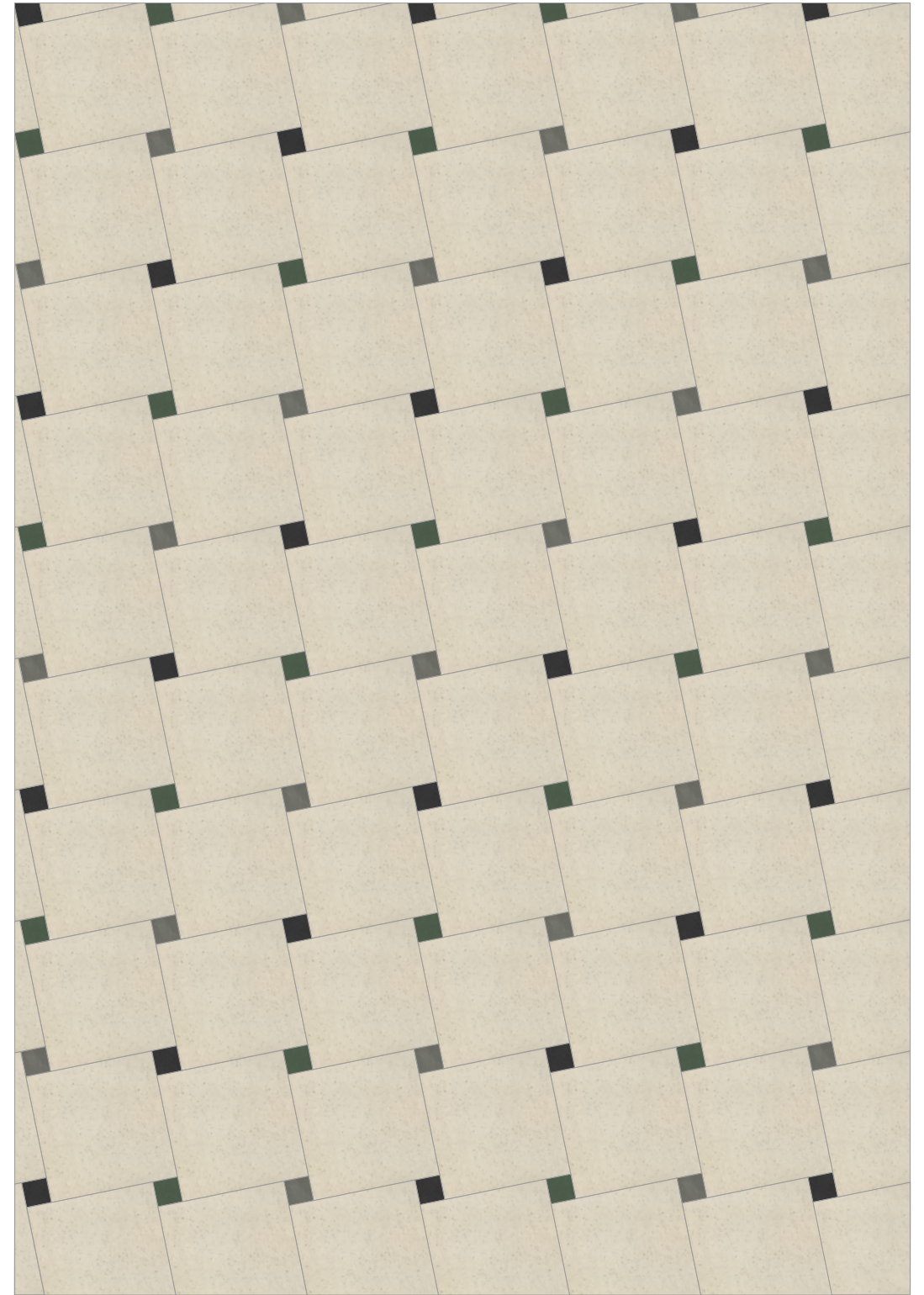
Dakota Grey Smooth
3,9x3,9 cm



Etna Black Smooth
3,9x3,9 cm



Highland Green Smooth
3,9x3,9 cm



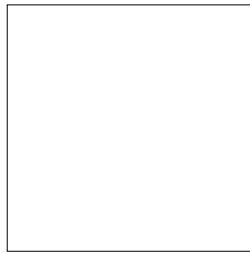
TECHNICAL FEATURES

Time è realizzata nel totale rispetto dell'ambiente: gli elementi sono prodotti in uno stabilimento certificato ISO14001, l'impasto utilizzato è privo di V.O.C. (Volatile Organic Compounds) e di sostanze presenti nella lista Substances of Very High Concern (SVHC) and Restricted Substances Declaration, e gli imballi sono completamente riciclabili. Inoltre, gli elementi presentano ottime caratteristiche di igienicità, durabilità, resistenza e riciclabilità.

Time is realised with full respect for the environment: the elements are produced in a ISO14001 certified facility, the base tile body is free from V.O.C. (Volatile Organic Compounds) and substances on the Substances of Very High Concern (SVHC) list and Restricted Substances Declaration, and the packaging is fully recyclable. Furthermore, the elements are extremely hygienic, durable, resistant and recyclable.

General information

collection	Time
design	Edward Barber & Jay Osgerby, 2023
production	Industrial
material	unglazed and not rectified porcelain stoneware
thickness	12 mm
nominal sizes	20,5-20,5 cm (8"-8") 3,9-20,5 cm (1,5"-8") 3,9-3,9 cm (1,5"-1,5")
specification	- 8 Colors Each colour is available in 2 textures: rough and smooth.
complementary pieces	Skirting
category	UNI EN 14411 App G (Bla group) UGL



20,5-20,5 cm
8"-8"



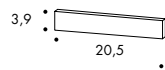
3,9-20,5 cm
1,5"-8"



3,9-3,9 cm
1,5"-1,5"

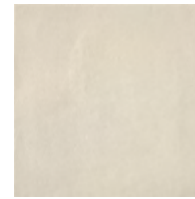
complementary pieces

skirting
3,9-20,5 cm
1,5"-8"

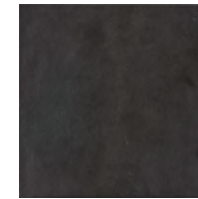


section

Colors



Dover White Smooth



Etna Black Smooth



Dakota Grey Smooth



Atlas Brown Smooth



Dover White Rough



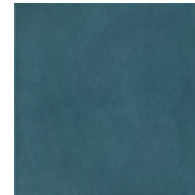
Etna Black Rough



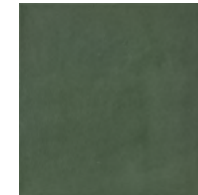
Dakota Grey Rough



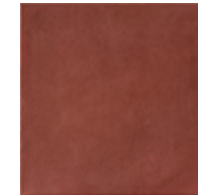
Atlas Brown Rough



Virginia Blue Smooth



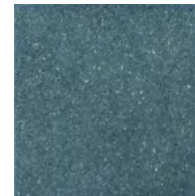
Highland Green Smooth



Salta Red Smooth



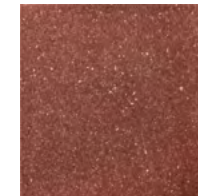
Sahara Sand Smooth



Virginia Blue Rough



Highland Green Rough



Salta Red Rough



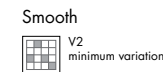
Sahara Sand Rough

Laying and maintenance tips

use	Floor, wall – indoor, outdoor.
installation	For an even, smooth shading effect when laying, alternate material from several different boxes
recommended adhesive	Adhesive for porcelain stoneware
recommended joints	2 millimetres
recommended fillers	cement-based grout / epoxy grout
cleaning at the end of installation	CEMENT-BASED GROUT: Buffered acid (e.g. DETERDEK PRO by FILA or similar). Wet the floor with water, dilute the product 1:5 with water and pour it on the floor. Wait for 2-3 minutes then use a white scotch brite pad and rinse well with clean water. EPOXY GROUT: Alkaline detergent (e.g. FILA CR10 by FILA). FILA CR10: apply pure, wait for 30 minutes then use a green scotch brite pad. SILICONE: Solvent for silicone e.g. FILA ZERO SIL. Put it straight onto the stain, wait for 20 minutes and remove the mark using scotch brite. PAINT: Can usually be removed using water, but if resin-based paints or particular enamels have been used, it is best to ask the manufacturer which solvent is most suitable. RUST: stain remover es. FILA NO RUST. Apply the product onto the stain, leave for 15 minutes, remove the residue and rinse thoroughly.
general cleaning (installed tiles)	You are recommended to use specific detergent for porcelain stoneware diluted in water.
calibers (real size)	20,5-20,5 cm: cal 1: from 203,6-203,6 mm to 205-205 mm – cal 0: from 202,1-202,1 mm to 203,5-203,5 mm 3,9-20,5 cm: cal 1: from 39-203,6 mm to 39-205 mm – cal 0: from 39-202,1 mm to 39-203,5 mm 3,9-3,9 cm: single caliber 39-39 mm (calibers depend on the production lot, we recommend to ask in advance)

Technical features

STANDARD	FEATURES	VALUE REQUIRED	TIME Smooth	TIME Rough
ISO 10545/3	water absorption	< 0,5%	0,06%	0,06%
ISO 10545/4	breaking strength	≥ 1300 N	in conformity with standard	in conformity with standard
	modulus of rupture	≥ 32 N/mm ²		
ISO 10545/9	resistance to thermal shock	no visible alteration	resistant	resistant
ISO 10545/12	frost resistance	no visible alteration	resistant	resistant
ISO 10545/13	resistance to acids and alkalis (low and high concentration)	declared value	A	A
	resistance to household cleaning agents and swimming pool chemicals	minimum class B	A	A
ISO 10545/14	stains resistance	minimum class 3	5	5
DIN 51130			R10	R11
DIN 51097			B	C
Pendulum BS (EN 16165-c)			60 dry 50 wet	65 dry 55 wet
Pendulum AS/NZS (4586313 app A)			49 P4	52 P4
LEED CERTIFICATION 4.1			20% recycled materials	20% recycled materials
VOC Emission			available upon request	available upon request
EPD			available upon request	available upon request
Declaration of Contents			available upon request	available upon request
SVHC declaration			available upon request	available upon request



Packing

SIZE	PCS-SQM	PCS-BOX	SQM-BOX	BOX-PAL	KG-BOX	KG-PAL	SQM-PAL
20,5-20,5 cm	23,88	13	0,55	48	14,70	705,60	26,40
3,9-20,5 cm	125,08	65	0,55	48	14,70	706	26,40
3,9-3,9 cm	657,50	50	0,08	216	2,22	480	17,28
skirting 3,9-20,5 cm	-	8	1,64 ml	-	1,81	-	-

CREDITS

Art Direction: Alla Carta Studio
Graphic Design: Matteo Pastorio
Text: Mutina
Photography: Claudia Zalla,
Piergiorgio Sorgetti (pp.4 – 11),
Set Design: Sonia Pravato
February 2024

All the rights are reserved.
Not any part of this work can be reproduced
in any way without the preventive written
authorization by Mutina. All work is
copyrighted © to their respective owners.

To discover more about Mutina
collections visit mutina.it

Ceramiche Mutina Spa
Via del Crociale 25
41042 Fiorano Modenese, Italia
T +39 0536812800
F +39 0536812808
info@mutina.it
www.mutina.it

© Mutina 2024



Scan the QR code to discover more about Time.



